

FURUNO

OPERATOR'S MANUAL

COLOR LCD SOUNDER

MODEL FCV-581L



FURUNO ELECTRIC CO., LTD.
NISHINOMIYA, JAPAN

© **FURUNO ELECTRIC CO., LTD.**

9-52, Ashihara-cho,
Nishinomiya, Japan

Telephone: 0798-65-2111
Telefax: 0798-65-4200

•Your Local Agent/Dealer

All rights reserved.

Printed in Japan

FIRST EDITION : APR. 1998
F : DEC. 8, 1999

(TENI)

PUB. No. OME-23580
FCV-581L



* 00080826800 *



SAFETY INSTRUCTIONS

WARNING



ELECTRICAL SHOCK HAZARD
Do not open the equipment.

Only qualified personnel should work inside the equipment.

Immediately turn off the power at the switchboard if water leaks into the equipment.

Continued use of the equipment can cause fire or electrical shock. Contact a FURUNO agent for service.

Do not disassemble or modify the equipment.

Fire, electrical shock or serious injury can result.

Immediately turn off the power at the switchboard if the equipment is emitting smoke or fire.

Continued use of the equipment can cause fire or electrical shock. Contact a FURUNO agent for service.

Make sure no rain or water splash leaks into the equipment.

Fire or electrical shock can result if water leaks in the equipment.

WARNING

Keep heater away from equipment.

A heater can melt the equipment's power cord, which can cause fire or electrical shock.

Use the proper fuse.

Use only a 3A fuse. Use of a wrong fuse can result in equipment damage and void the warranty.

CAUTION

A warning label is attached to the equipment. Do not remove the label. If the label is peeling off or is illegible, contact a FURUNO agent or dealer.

About the TFT LCD

The TFT LCD is constructed using the latest LCD techniques, and displays 99.99% of its pixels. The remaining 0.01% of the pixels may drop out or blink, however this is not an indication of malfunction.

TABLE OF CONTENTS

FOREWORD	iii
MENU TREE	iv
SYSTEM CONFIGURATION	v
PRINCIPLE OF OPERATION	vi

OPERATIONAL OVERVIEW

1.1 Control Description	1
1.2 Indications, Markers	2
1.3 Turning On/Off the Power	3
1.4 Adjusting Tone and Brilliance	3
1.5 Selecting a Display	3
1.6 Selecting Display Range	6
1.7 Adjusting the Gain	7
1.8 Automatic Operation	7
1.9 Selecting Picture Advance Speed	7
1.10 Erasing Weak Echoes	8
1.11 Measuring Depth	8
1.12 A-scope Display	9
1.13 User Menu	9
1.14 Suppressing Interference	10
1.15 Suppressing Low Level Noise	10
1.16 Selecting Background and Echo Colors	11
1.17 Alarms	11
1.18 White Marker	12

OPTIONAL MODE

2.1 Displaying the Optional Mode Menu ..	13
2.2 System Menu	13
2.3 Demonstration Display	15
2.4 Bottom Level	15
2.5 TVG Level	16
2.6 Echo Offset	16

INTERPRETING THE DISPLAY

3.1 Zero Line	17
3.2 Fish School Echoes	17
3.3 Bottom Echo	17
3.4 Surface Noise/Aeration	18

MAINTENANCE & TROUBLESHOOTING

4.1 Checking	19
4.2 Cleaning the Display Unit	19
4.3 Transducer Maintenance	19
4.4 Replacing the Fuse	19
4.5 Troubleshooting	20
4.6 Self Test	21
4.7 Test Pattern	21
4.8 Clearing the Memory	22

SPECIFICATIONS

SP-1

INDEX

Index-1

FOREWORD

A Word to FCV-581L Owners

Congratulations on your choice of the FURUNO FCV-581L Color LCD Sounder. We are confident you will see why the FURUNO name has become synonymous with quality and reliability.

For over 40 years FURUNO Electric Company has enjoyed an enviable reputation for innovative and dependable marine electronics equipment. This dedication to excellence is furthered by our extensive global network of agents and dealers.

This equipment is designed and constructed to meet the rigorous demands of the marine environment. However, no machine can perform its intended function unless operated and maintained properly. Please carefully read and follow the recommended procedures for operation and maintenance.

We would appreciate hearing from you, the end-user, about whether we are achieving our purposes.

Thank you for considering and purchasing FURUNO equipment.

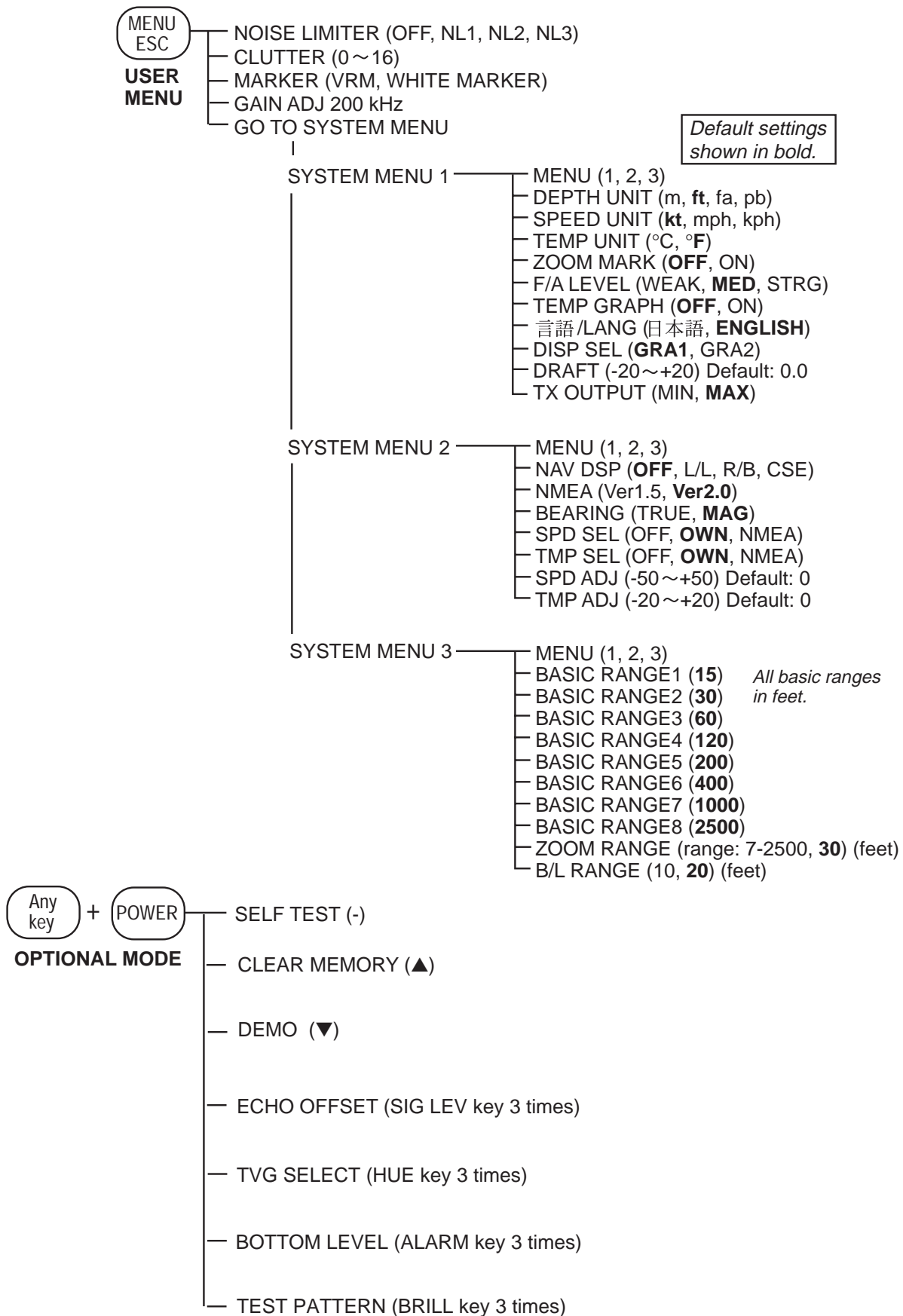
Features

The FURUNO FCV-581L is a single frequency (50 kHz or 200 kHz) color LCD sounder. Comprised of a display unit and a transducer, the FCV-581L displays underwater conditions in 16 colors (including background) on a bright 6.5-inch color TFT (Thin Film Transistor) LCD.

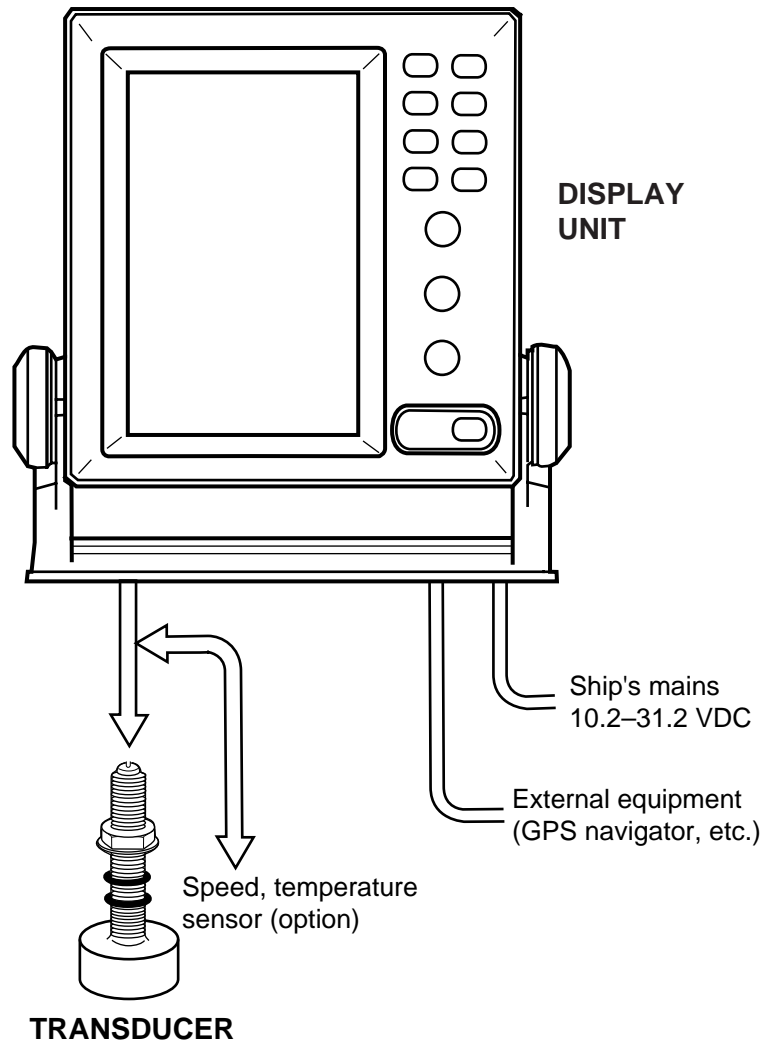
The main features of the FCV-581L are

- Compact design permits installation where space is limited.
- Bright 6.5-inch color LCD with temperature compensated tone and brilliance control.
- Wide variety of display modes: bottom lock, marker zoom, bottom zoom, nav data and graphic display.
- Automatic function permits unattended adjustment of range and gain. The range scale and gain automatically change to display the bottom in reddish-brown on the lower half of the screen.
- Navigation data display (requires navigation data input from external navigator) provides position, course, speed, depth, temperature and waypoint data indications.
- Alarms: Bottom, Fish (bottom-lock, normal), Temperature (within, over range set).
- A-scope display discriminates bottom fish, vital for bottom trawler and trap users.
- Universal 10.2–31.2 VDC power supply consuming less than 20 W power.

MENU TREE



SYSTEM CONFIGURATION



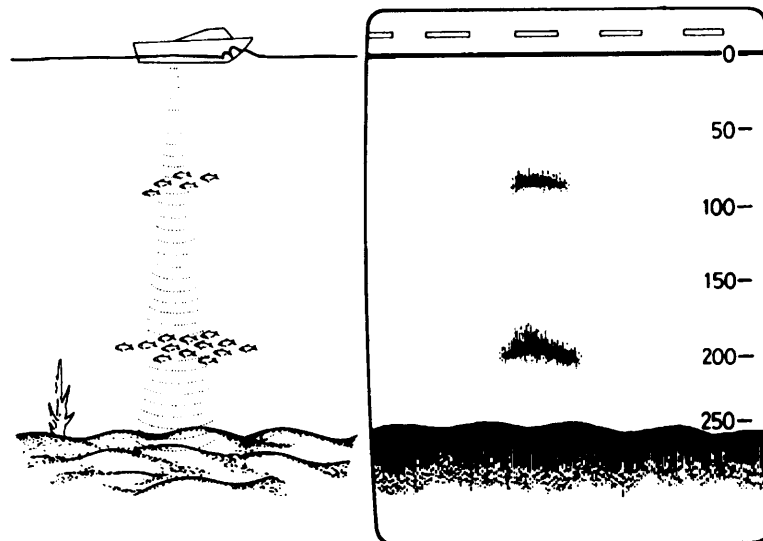
FCV-581L system configuration

PRINCIPLE OF OPERATION

The FCV-581L determines the distance between its transducer and underwater objects such as fish, lake bottom or seabed and displays the results on its screen. It does this by utilizing the fact that an ultrasonic wave transmitted through water travels at a nearly constant speed of 4800 feet (1500 meters) per second. When a sound wave strikes an underwater object such as fish or sea bottom, part of the sound wave is reflected back toward the source. Thus by calculating the time difference between the transmission of a sound wave and the reception of the reflected sound wave, the depth to the object can be determined.

The entire process begins in the display unit. Transmitter power is sent to the transducer as a short pulse of electrical energy. The electrical signal produced by the transmitter is converted into an ultrasonic signal by the transducer and transmitted into the water. Any returning signals from intervening objects (such as a fish school) are received by the transducer and converted into an electrical signal. The signals are then amplified in the amplifier section, and finally, displayed on the screen.

The picture displayed is made up of a series of vertical scan lines, one for each transmission. Each line represents a snapshot of what has occurred beneath the boat. Series of snapshots are accumulated side by side across the screen, and the resulting contours of the bottom and fish between the bottom and surface are displayed.



Underwater conditions and video sounder display

OPERATIONAL OVERVIEW

1.1 Control Description

All operations of the FCV-581L are carried out with the controls on the front panel of the display unit. All controls respond immediately to your command and the unit emits a beep to signify correct key sequence. (Invalid key input emits several beeps.)

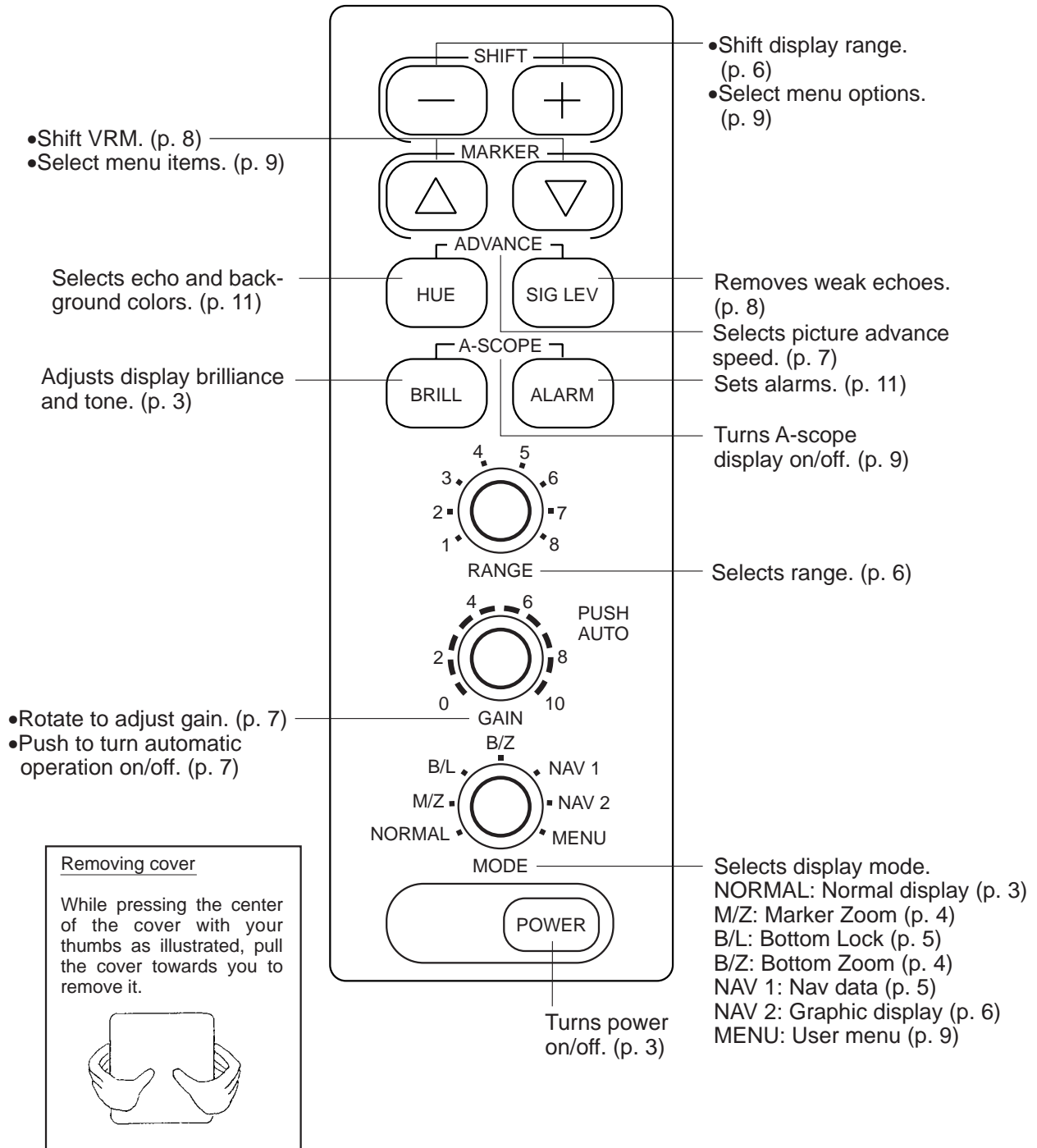


Figure 1-1 Controls

1.2 Indications, Markers

The figure below shows all indications and markers which may appear in the normal display. The combination displays (normal display plus marker or zoom display) may additionally display the zoom marker.

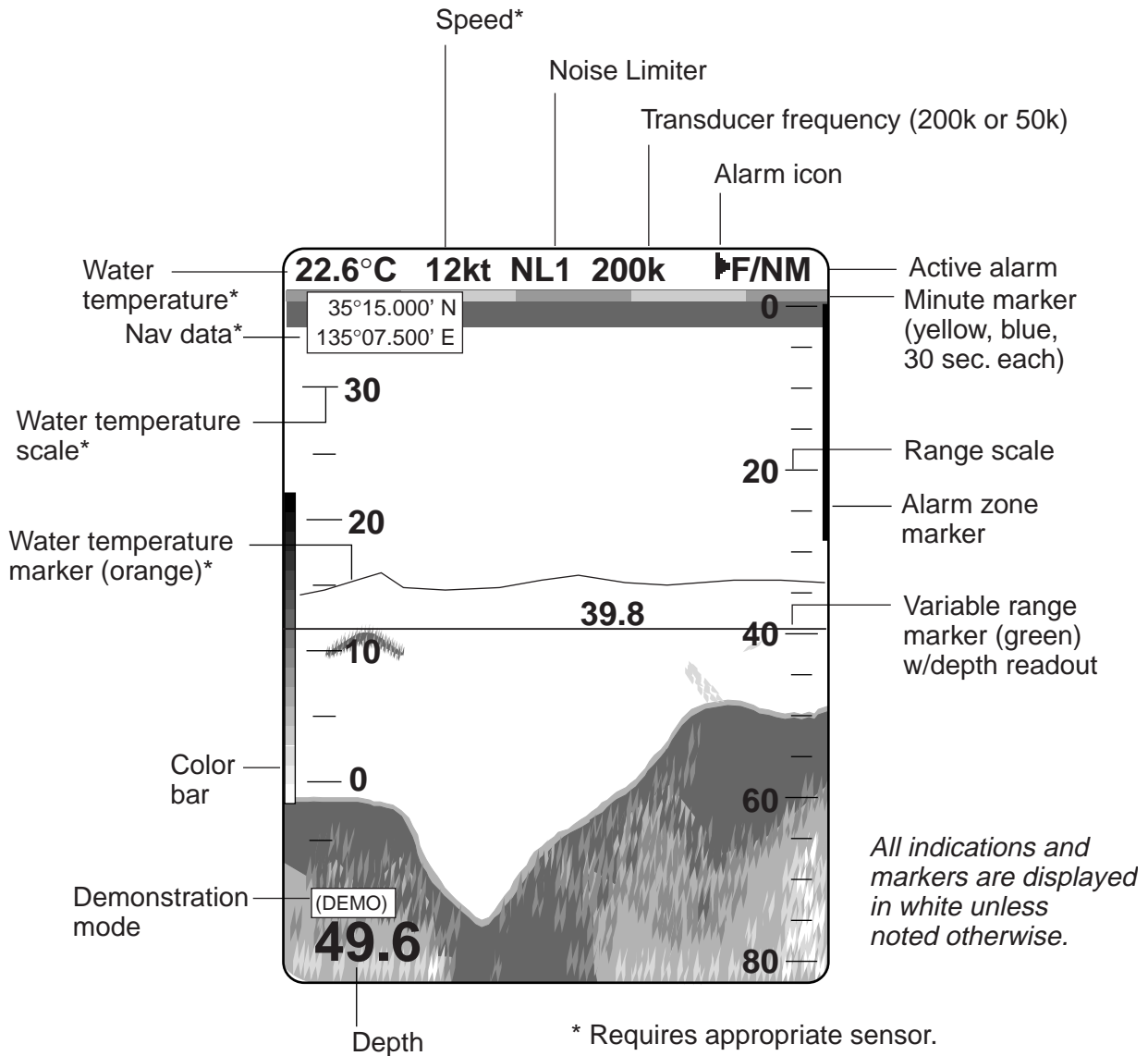
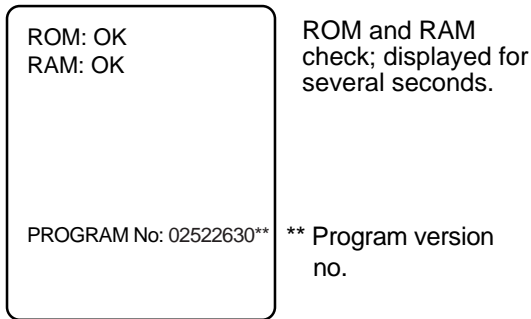


Figure 1-2 Indications

1.3 Turning On/Off the Power

Press the POWER key to turn the power on/off. When the unit is turned on it proceeds in the sequence shown below.



↓ You may press any key to display the sounder display immediately.

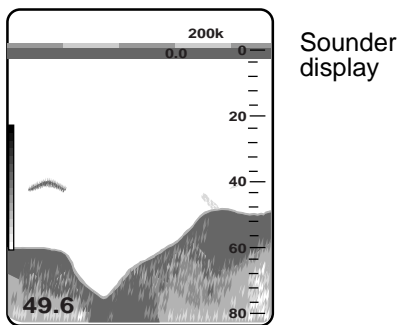


Figure 1-3 Start-up sequence

Note: Wait at least five sec. before reapplying the power.

1.4 Adjusting Tone and Brilliance

1. Press the BRILL key. The tone and brilliance setting display appears.

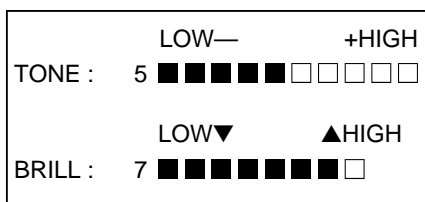


Figure 1-4 Tone and brilliance setting display

2. Press the [+] or [-] key to adjust display tone.

3. Press the [▲] or [▼] key to adjust display brilliance.

Note 1: The location of the arrow keys on the brilliance setting display is opposite from the same controls on the control panel.

Note 2: Tone or brilliance must be adjusted within about 10 seconds after pressing the BRILL key or the tone and brilliance display will be erased.

1.5 Selecting a Display

Seven displays are available: normal, marker zoom, bottom zoom, bottom lock, NAV 1 (data), NAV 2 (graphic), and menu. (An A-scope display is also available with the BRILL and ALARM keys.)

To select a display mode, operate the MODE control.

Normal display

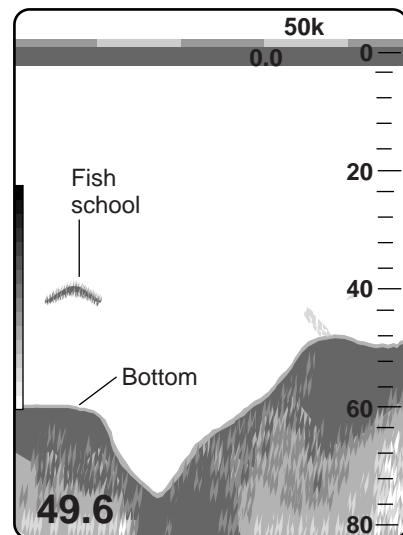


Figure 1-5 Typical normal display (transducer frequency indication depends on transducer used)

Marker-zoom display

This mode expands selected area of the normal picture to full vertical size of the screen on the left-half window. You may specify the portion to expand by operating the VRM (Variable Range Marker), which you can shift with the [▲] or [▼] key. The area between the VRM and zoom range marker is expanded. The length of the segment is equal to one division of the depth scale.

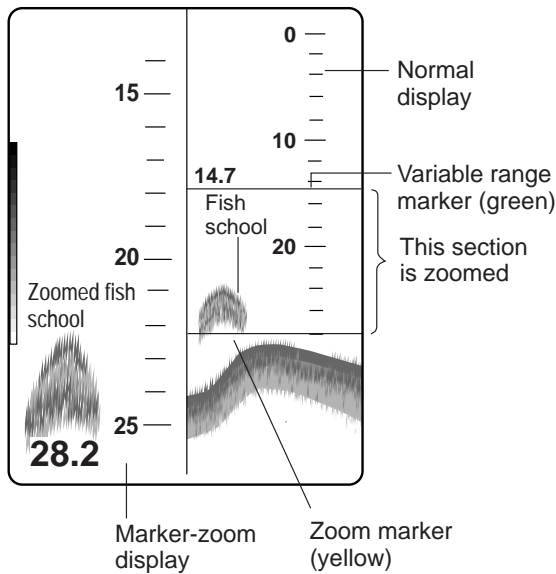


Figure 1-6 Marker-zoom display plus normal display

Note: The zoom marker looks like white when the background is blue.

Bottom-zoom display

This mode expands bottom and bottom fish echoes two to five times to vertical size of the screen, and is useful for determining bottom hardness. A bottom displayed with a short echo tail usually means it is a soft, sandy bottom. A long echo tail means a hard bottom.

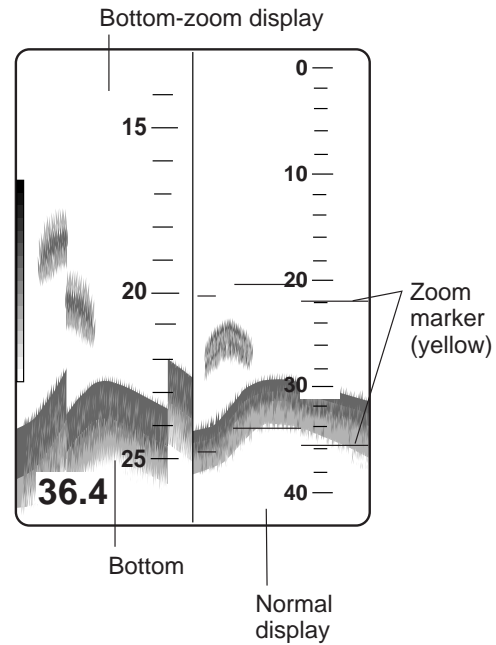


Figure 1-7 Bottom-zoom display plus normal display

Bottom-lock display

The bottom-lock display provides a compressed normal picture on the right half of the screen and a 5 or 10 meter (10 or 20 feet) wide layer in contact with the bottom is expanded onto the left half of the screen. This mode is useful for bottom discrimination.

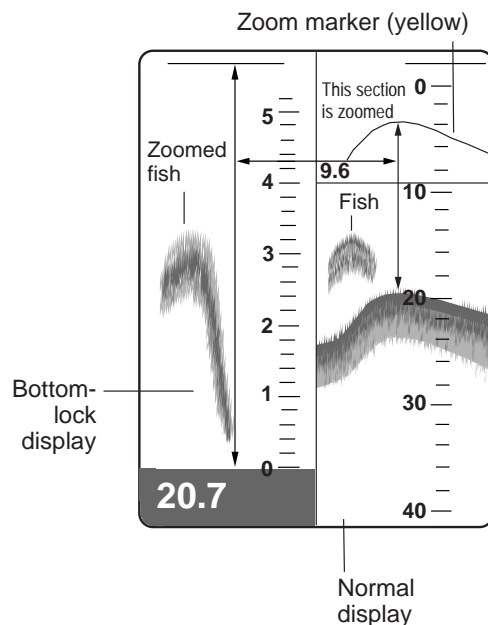


Figure 1-8 Bottom-lock display plus normal display

Note: The zoom marker is not displayed in the default setting. It may be turned on in System menu 1. For further details see page 13.

Nav display

Select NAV 1 with the MODE control to show the nav display. This display provides navigation data in digital form – date, time, position, course, speed, depth, water temperature and waypoint data can be shown. Requires nav data input and appropriate sensors.

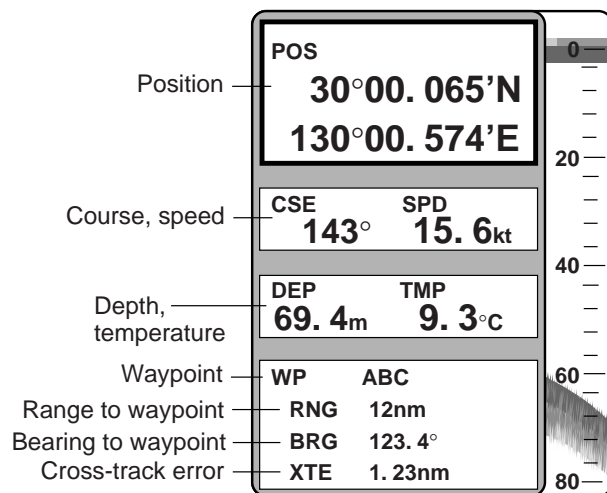


Figure 1-9 Data display

Enlarging a nav data indication

You can enlarge and display one of the data indications as follows:

1. Press the [▲] or [▼] key to select the indication you want to display. A blue cursor circumscribes your selection. For example, select the waypoint data window.
2. Press the [+] key to enlarge the data.

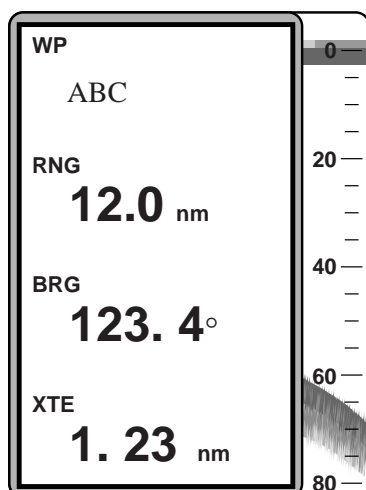


Figure 1-10 WP data window enlarged

3. To return to the full data display, press the [-] key.

Graphic display

There are two types of graphic displays: Graphic display 1 and Graphic display 2, and you can select which one to display on the SYSTEM MENU 1.

Select NAV 2 with the MODE control to show the graphic display which is selected on the SYSTEM MENU 1. The Graphic display 1 provides analog and digital displays of cross-track error (XTE), course and bearing. It is useful for monitoring progress toward a waypoint. The XTE scale in the center of the display, graduated in increments of 0.1 nm, shows cross-track error, the direction and distance the boat is off course. In the example below the XTE marker (red) shows the boat is off course by 0.2 nm starboard. Therefore you would steer left by the same distance to return to course.

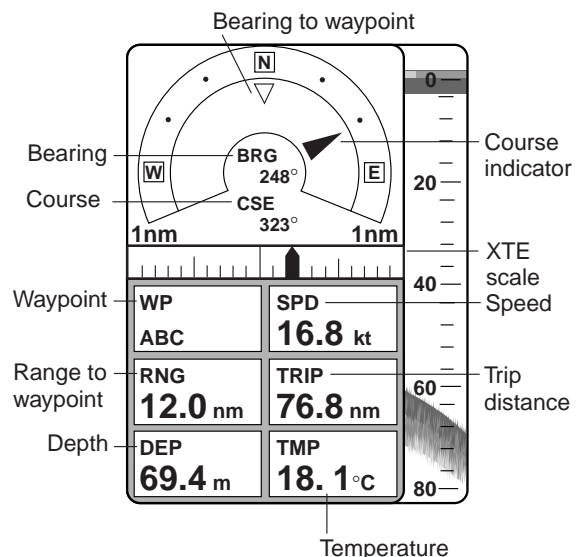


Figure 1-11a Graphic display 1

Resetting trip distance indication on graphic displays

The trip distance indication displays the distance the boat has traveled. To reset the indication to zero, press both the [▲] and [▼] keys until the indication reads zero. (The indication can also be reset by pressing one of the keys, in which case it takes about five seconds.) Note that the indication is reset to zero whenever the power is turned off.

The Graphic display 2 mainly provides analog speed meter and cross-track error indication.

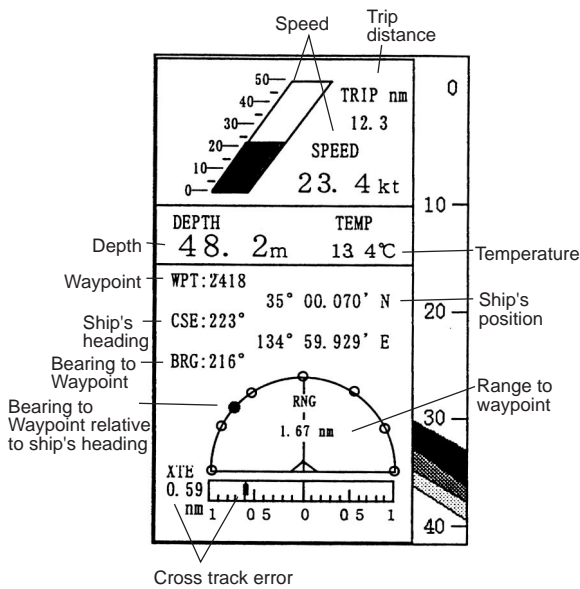


Figure 1-11b Graphic display 2

1.6 Selecting Display Range

The basic range and range shifting functions used together give you the means to select the depth you can see on the screen. The basic range can be thought of as providing a “window” into the water column and range shifting as moving the “window” to the desired depth.

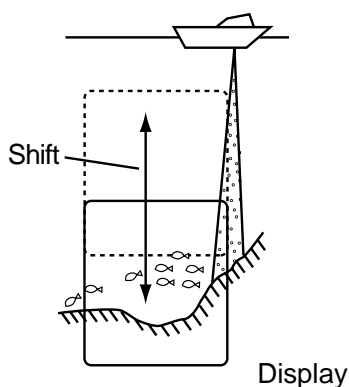


Figure 1-12 Range and display shift concept

Basic range selection

The basic range may be selected by the RANGE control from the eight ranges shown in the table below.

Table 1-1 Basic ranges (default settings)

Unit	Display Range							
	1	2	3	4	5	6	7	8
Meters	5	10	20	40	80	150	300	800
Feet	15	30	60	120	200	400	1000	2500
Fathoms	3	5	10	20	40	80	150	400
Passi/Braza	3	5	10	30	50	100	200	500

Operate the RANGE control to select a basic range. Current selection is shown in the range display window.



Figure 1-13 Range display

Range shifting

The basic range may be shifted with the [+] and [-] keys. The shift display window, which appears when the [+] or [-] key is operated, shows current shift amount.



Figure 1-14 Shift display

Note 1: The SHIFT keys and RANGE control are inoperative in automatic operation.

Note 2: The maximum shift range is 2500 feet (500 m). However, the actual range will depend on underwater conditions. In the worst case echoes will not appear.

1.7 Adjusting the Gain

The GAIN control adjusts the sensitivity of the receiver. Adjust the control so that a slight amount of noise remains on the screen. Generally, use a higher gain setting for greater depths and a lower setting for shallower waters. Note that the GAIN control is inoperative in automatic operation.

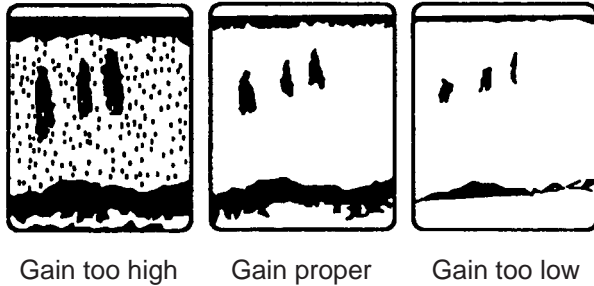


Figure 1-15 Examples of proper and improper gain

1.8 Automatic Operation

Automatic operation is useful when you are preoccupied with other tasks and do not have time to adjust the display.

How it works

The automatic function automatically selects the proper gain and range scale according to depth. It works as follows:

- The range changes automatically to locate the bottom on the lower half of the screen. It jumps to one step shallower range when bottom echoes reach a halfway point of the full scale from top and to one step deeper range when they come to the lower edge of the scale.
- The gain is automatically adjusted to display the bottom echo in reddish-brown (default color arrangement).
- Clutter level (on the User menu), which suppresses low level noise, is automatically adjusted.

Note: The GAIN and RANGE controls and the SHIFT keys are inoperative in automatic operation.

Two types of automatic modes

Two types of automatic modes are available: cruising and fishing. Cruising is for tracking the bottom; fishing is for searching fish schools. Since cruising uses a higher clutter rejection setting than fishing, it is not recommended for fish detection – weak fish echoes may be deleted by clutter rejection.

How to enable automatic operation

1. Push the GAIN control. The auto mode display appears.

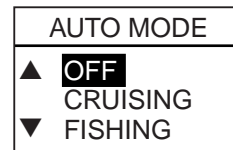


Figure 1-16 Auto mode display

2. Push the GAIN control again to select Cruising or Fishing.

1.9 Selecting Picture Advance Speed

The picture advance speed determines how quickly the vertical scan lines run across the screen. When selecting a picture advance speed, keep in mind that a fast advance speed will expand the size of the fish school horizontally on the screen and a slow advance speed will contract it.

1. Press the HUE and SIG LEV keys together. The following display appears.

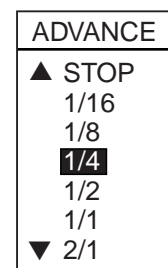


Figure 1-17 Picture advance speed selection display

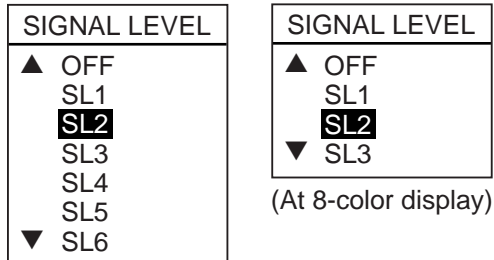
The fractions in the menu denote number of scan lines produced per transmission. For example, 1/8 means one scan line is produced every 8 transmissions. STOP freezes the display and it is convenient for observing an echo.

2. Press the [▲] or [▼] key to select speed desired.

1.10 Erasing Weak Echoes

Dirty water or reflections from plankton may be painted on the display in green or light-blue. These weak echoes may be erased as follows:

1. Press the SIG LEV key. The following display appears.



(At 16-color display)

Figure 1-18 Signal level display

2. Press the SIG LEV key again to select signal level (echo color) to erase. The color deleted disappears from the color bar and is replaced with dark-blue color. SL1 erases the weakest echo; SL6 the light-blue echo.

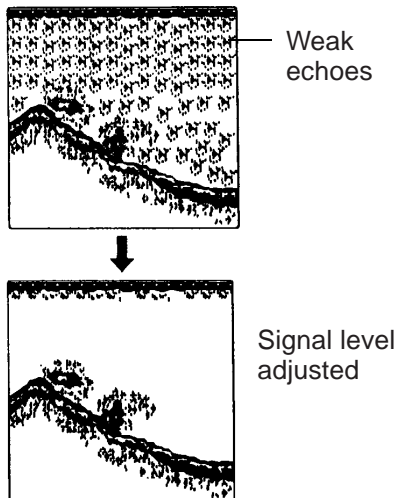


Figure 1-19 How SIG LEV works

1.11 Measuring Depth

The VRM (Variable Range Marker) functions to measure the depth to fish schools, etc.

1. Press the [▲] or [▼] key to place the VRM on an echo.
2. Read the VRM range just above the VRM.

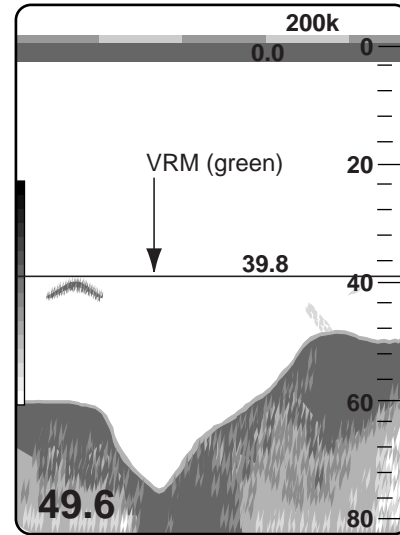


Figure 1-20 How to measure depth with the VRM

1.12 A-scope Display

This display shows echoes at each transmission with amplitudes and tone proportional to their intensities, on the right 1/3 of the screen. It is useful for estimating the kind of fish school and bottom composition.

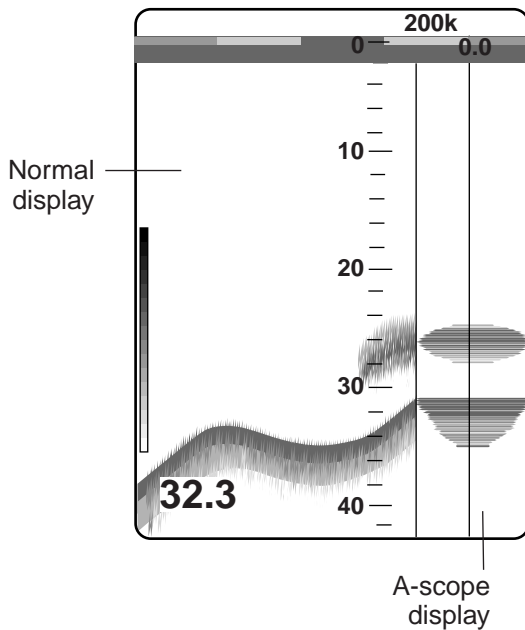


Figure 1-21 A-scope display

1. Press the BRILL and ALARM keys together. The A-SCOPE selection display appears.



Figure 1-22 A-scope selection display

2. Press the [▲] or [▼] key to select OFF or ON.

1.13 User Menu

The User menu has several functions which require adjustment according to operating conditions.

1. Select MENU with the MODE control.

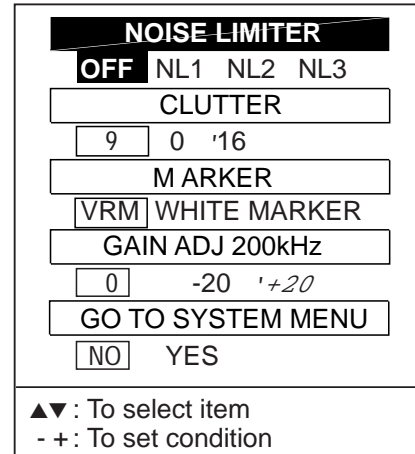


Figure 1-23 User menu

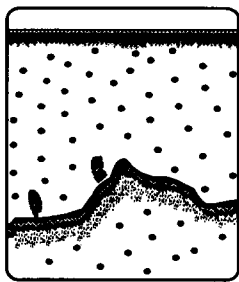
2. Press the [▲] or [▼] key to select menu item. As you operate the [▲] or [▼] key, the selected item and its current setting appear in reverse video.
3. Press the [+] or [-] key to set condition.
4. Set the MODE control in another position to close the menu.

1.14 Suppressing Interference

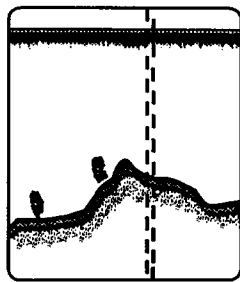
Interference from other acoustic equipment operating nearby or other electronic equipment on your boat may show itself on the display as shown in Figure 1-24.

To suppress interference, do the following:

1. Select MENU with the MODE control.
2. Select NOISE LIMITER.
3. Press the [+] or [-] key to select degree of suppression desired; OFF, NL1, NL2 or NL3. The higher the number the greater the degree of suppression.



Interference from other sounder



Electrical interference

Figure 1-24 Interference

Turn the noise limiter circuit off when no interference exists, otherwise weak echoes may be missed.

1.15 Suppressing Low Level Noise

Light-blue dots may appear over most of screen. This is mainly due to dirty water or noise. This noise can be suppressed by adjusting CLUTTER on the User menu.

When the automatic mode is on, the clutter suppression setting is fixed at AUTO. To suppress low level noise in manual sounder operation do the following:

1. Select MENU with the MODE control.
2. Select CLUTTER.
3. Press the [+] or [-] key to select clutter rejection level desired. The higher the number the higher the degree of suppression. Note that weak echoes may not be displayed when the clutter circuit is on.

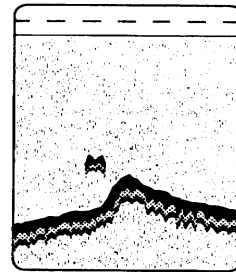


Figure 1-25 Clutter appearance

1.16 Selecting Background and Echo Colors

1. Press the HUE key.

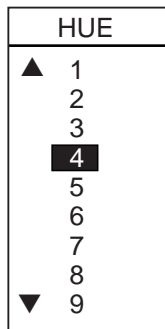


Figure 1-26 Hue display

2. Press the HUE key again to select hue number. (You can see the result of your selection on the display.)

Table 1-2 Background and echo colors

Hue No.	Echo Color	Background Color
1	16 color	Medium-blue
2	8 color	Medium-blue
3	16 color	Dark-blue
4	8 color	Dark-blue
5	16 color	White
6	8 color	White
7	16 color	Black
8	8 color	Black
9	Monochrome, 8 intensities	

1.17 Alarms

Bottom alarm

The bottom alarm sounds when the bottom is within the alarm range set. To activate the bottom alarm the depth must be displayed.

Fish alarm

There are two types of fish alarms: bottom-lock and normal. The bottom-lock fish alarm sounds when fish are within a certain distance from the bottom. The normal fish alarm sounds when fish are within the preset alarm range.

Water temperature alarm

There are two types of water temperature alarms: IN and OUT. The IN alarm sounds when the water temperature is within the range set; the OUT alarm sounds when the water temperature is higher than the range set. This alarm requires water temperature data.

Activating/deactivating an alarm

1. Press the ALARM key to display the alarm settings display and select alarm desired.

BOTTOM ALARM ZONE	<input type="checkbox"/> OFF	ON
RANGE	<input type="text" value="0"/> ~ <input type="text" value="5"/>	<input type="text" value="5"/>
FISH (NORMAL) ALARM ZONE	<input type="checkbox"/> OFF	ON
RANGE	<input type="text" value="0"/> ~ <input type="text" value="5"/>	<input type="text" value="5"/>
FISH (B/L) ALARM ZONE	<input type="checkbox"/> OFF	ON
RANGE	<input type="text" value="22"/> ~ <input type="text" value="21"/>	<input type="text" value="1"/>
TEMP ALARM ZONE	<input type="checkbox"/> OFF	IN OUT
RANGE	<input type="text" value="32"/> ~ <input type="text" value="37"/>	<input type="text" value="5"/>
▲▼ : To select item - + : To set condition		

Figure 1-27 Alarm mode display

Table 1-3 Alarm width data

Alarm	Alarm Width (m)	Default Setting (m)
Bottom	1-99	5
Fish-Normal	1-99	5
Fish-B/L	1-B/L value	1
Temp IN	1-99	5
Temp OUT	1-99	5

2. Press the [+] key to select ON.

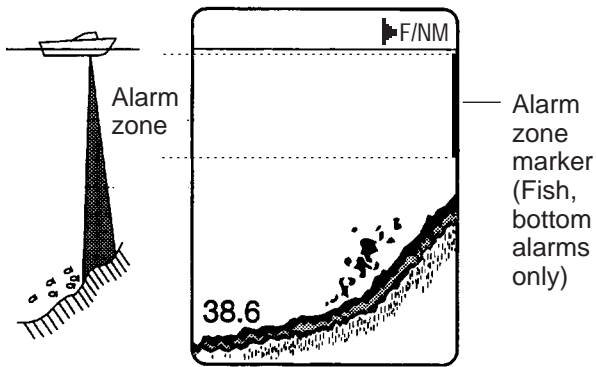


Figure 1-28 Alarm zone

3. Press the [▼] key to set ALARM ZONE.
4. Press the [+] or [-] key to change alarm zone.
5. Press the [▼] key to set RANGE.
6. Press the [+] or [-] key to change range.
7. To deactivate an alarm, select OFF on the ALARM MODE display.

Note: For fish alarm set “F/A LEVEL.” See page 13.

Silencing the buzzer

The buzzer sounds whenever an alarm is violated. You can temporarily silence the buzzer by pressing any key. However, the buzzer will sound when the alarm setting is again violated.

1.18 White Marker

The white marker functions to display a particular echo color in white. For example, you may want to display the bottom echo (reddish-brown) in white to discriminate fish echoes near the bottom. Note that the bottom must be displayed in reddish-brown for the white marker to function.

1. Press the [▲] and [▼] keys together until the display shown below appears.

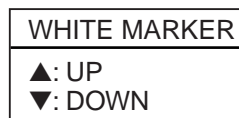


Figure 1-29 White marker display

2. Press the [▲] or [▼] key to select color to display in white. As you press the [▲] or [▼] key, the arrow next to the color bar shifts and selected echo color is displayed in white.

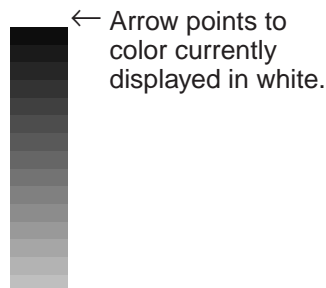


Figure 1-30 Color bar when white marker display is on

To turn the white marker function off, set the arrow below the weakest color in the color bar in step 2 of the above procedure.

OPTIONAL MODE

2.1 Displaying the Optional Mode Menu

The Optional mode mainly contains less-of-ten used functions which once preset do not require frequent adjustment. You can access the Optional mode menu as follows:

1. Turn off the equipment.
2. Press the POWER key while pressing any key. The following display appears.

OPTIONAL MODE
←: SELF TEST ▲: CLEAR MEMORY ▼: DEMO
SELECT MODE

Figure 2-1 Optional mode selection display

Note: You can activate desired mode directly (by passing the optional mode menu) by pressing the POWER key plus appropriate key among [←], [▲] or [▼]. For example, press POWER and [▼] to display the DEMO MODE.

3. Operate [▲], [▼] or [←] to select item.
Note: SELF TEST and CLEAR MEMORY are explained in the chapter on maintenance.
4. To escape from the Optional mode, turn off the power.

Note: Wait at least five sec. before reapplying the power.

2.2 System Menu

There are three system menus: system menu 1, system menu 2, and system menu 3.

1. Select MENU by operating the MODE control.
2. Press [▼] to select GO TO SYSTEM MENU.

3. Press [+] at GO TO SYSTEM MENU. The System menu 1 appears.
4. With the cursor selecting MENU, operate the [+] or [-] key to select system menu desired.

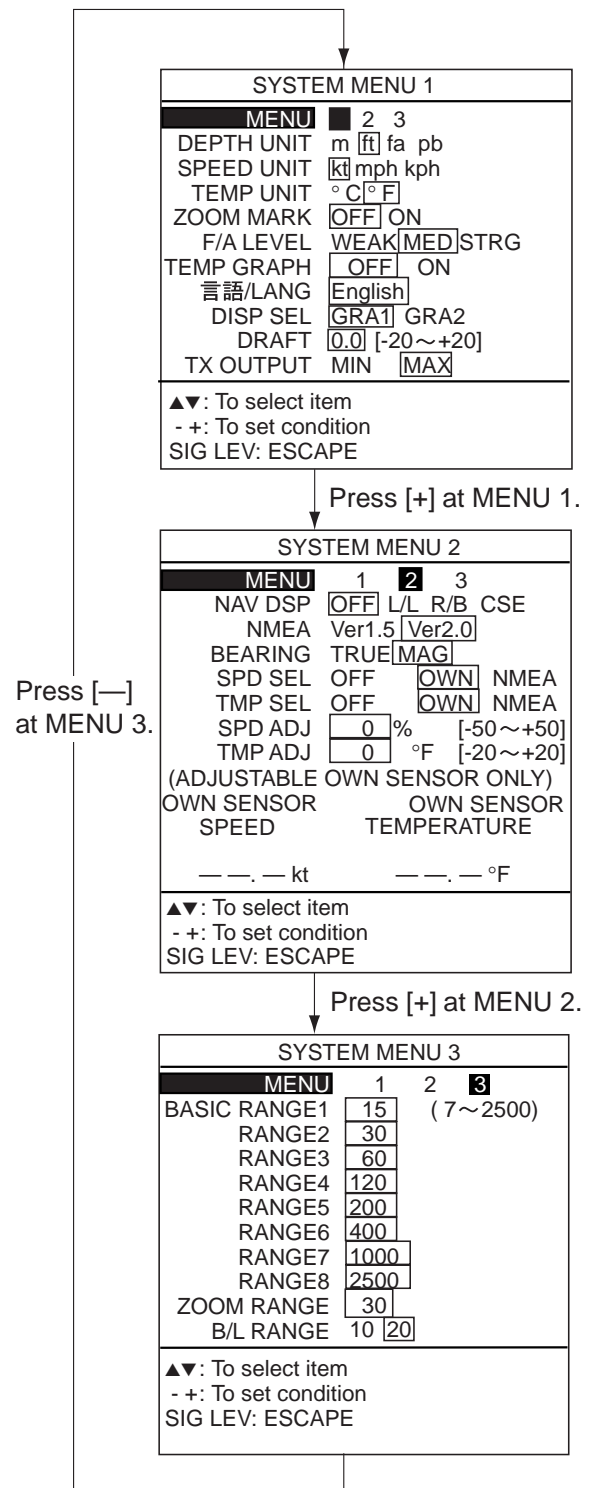


Figure 2-2 System menus

System menu 1 description

MENU: Selects system menu desired.

DEPTH UNIT: Selects unit of depth measurement among meters, feet, fathoms, or passi/braza. Default setting is feet.

SPEED UNIT: Selects unit of speed measurement among knots, miles per hour, or kilometers per hour. Default setting is knots. Requires speed data.

TEMP UNIT: Selects unit of temperature measurement; Celsius or Fahrenheit. Default setting is Fahrenheit. Requires temperature data.

ZOOM MARK: The zoom marker appears in the normal, bottom marker and bottom zoom displays and marks the area which is expanded in the bottom marker and bottom zoom pictures. You can turn on/off the marker as desired. The default setting is off.

F/A (Fish Alarm) LEVEL: Selects minimum echo strength level which triggers fish alarm; weak, medium, or strong. Default setting is medium.

TEMP GRAPH: Displays current water temperature in line graph form. (See illustration on page 2.) Default setting is off. Requires water temperature data.

LANG: Selects menu language; Japanese, English or etc. Default setting is English.

DISP SEL: Selects graphic displays: GRA 1, steering display; GRA 2, speed meter display. Default setting is GRA 1.

DRAFT: The zero line (sometimes referred to as the transmission line) represents the transducer's position, and moves off the screen when a deep phased range is used.

TX OUTPUT: Selects transmitter output level; maximum or minimum.

System menu 2 description

MENU: Selects system menu desired.

NAV DSP: Selects nav data to display on the video sounder displays; position (L/L), range and bearing (R/B), or course (CSE). (For the location of the nav data indication, see the illustration on page 2.) Default setting is off. Requires nav data input.

NMEA: Selects NMEA data input format; Ver. 1.5 or Ver. 2.0. Default setting is Ver. 2.0.

BEARING: Ship's course and bearing to a waypoint may be displayed in true or magnetic bearing, on the graphic display. Magnetic bearing is true bearing plus (or minus) earth's magnetic deviation. Default setting is magnetic. Requires bearing data.

SPD SEL: Selects source of speed input; OFF, OWN (speed sensor), or NMEA (external). Default setting is OWN. Requires speed data.

TMP SEL: Selects source of water temperature input; OFF, OWN (water temperature sensor), or NMEA (external). Default setting is OWN. Requires water temperature data.

SPD ADJ: If the speed sensor-generated speed indication is wrong, you can correct it here. (NMEA format speed data cannot be adjusted.) For example, if the speed indication is 10% lower than actual speed, enter +10. Default setting is zero.

TEMP ADJ: If the water temperature sensor-generated water temperature indication is wrong, you can correct it here. (NMEA format water temperature data cannot be adjusted.) For example, if the water temperature indication is 2° higher than actual water temperature, enter -2. Default setting is zero.

System menu 3 description

MENU: Selects system menu desired.

BASIC RANGE 1–BASIC RANGE 8: Set range of each of the eight basic ranges. Default basic ranges are 15, 30, 60, 120, 200, 400, 1000, and 1500 (feet).

Note 1: All default basic ranges are restored whenever the depth unit is changed. Therefore, change the depth unit before changing the basic ranges.

Note 2: Ranges must be set in numerical order. For example, if basic range 1 is 15 feet and basic range 5 is 200 feet, the basic range which can be set for basic range 4 is between 15 and 200 feet.

ZOOM RANGE: Select the range to zoom in the marker and bottom zoom modes. You may select a range between 7 and 2500 feet. Default setting is 30 feet.

B/L RANGE: The expansion width for the bottom-lock display can be selected to 10 feet or 20 feet. Default setting is 20 feet.

2.3 Demonstration Display

The demonstration display lets you get acquainted with the features of the FCV-581L without connecting the transducer. You can activate it as follows:

1. Turn on the power while pressing the [▼] key. Release the keys when the following display appears.

DEMO MODE	
<input type="checkbox"/> OFF	<input type="checkbox"/> ON
- +: To set condition ▼: OPTION MODE	

Figure 2-3 Demo mode display

2. Press the [+] key to select ON.
3. Reset the power. "DEMO" appears above the depth indication on the video sounder displays and at the top right-hand corner on the data and graphic displays.

To return to normal operation, turn off the demonstration display at step 2 in the above procedure.

2.4 Bottom Level

If the depth indication is unstable in automatic operation or the bottom echo cannot be displayed in reddish-brown by adjusting the gain controls in manual operation, you may adjust the bottom echo level detection circuit, for both 50 kHz and 200 kHz, to stabilize the indication. Note that if the level is set too low weak echoes may be missed and if set too high the depth indication will not be displayed.

1. Turn on the power while pressing any key except [▲], [▼], [+] or [-].
2. Press the ALARM key three times. The start-up screen appears and shortly thereafter the BOTTOM LEVEL display appears.

BOTTOM LEVEL	
50kHz=	80(20~200)
200kHz=	80(20~200)
▲▼ :	50kHz
- + :	200kHz

Figure 2-4 Bottom level display

3. Operate appropriate key among [▲], [▼], [+] or [-] to set level. The default bottom level for both 50 kHz and 200 kHz is 80.
4. Press the POWER key to escape.

2.5 TVG Level

TVG (Time Varied Gain) compensates for propagation attenuation of the ultrasonic waves. It does this by equalizing echo presentation so that fish schools of the same size appear in the same density in both shallow and deep waters. In addition, it reduces surface noise. Note that if the TVG level is set too high short range echoes may not be displayed.

1. Turn on the power while pressing any key except [▲], [▼], [+] or [-].
2. Press the ZOOM key three times. The start-up screen appears and shortly thereafter the TVG SELECT display appears.

TVG SELECT	
50kHz=	5(0~9)
200kHz=	5(0~9)
▲▼ :	50kHz
- + :	200kHz

Figure 2-8 TVG select display

3. Operate appropriate key among [▲], [▼], [+] or [-] to set level. The default TVG level for both 50 kHz and 200 kHz is 5.
4. Press the POWER key to escape.

2.6 Echo Offset

The echo offset feature functions to compensate for too weak or too strong echo level. If the on-screen echo level appears to be too weak or too strong and the level cannot be adjusted satisfactorily with the GAIN control, do the following to adjust echo level:

1. Turn on the power while pressing any key except [▲], [▼], [+] or [-].
2. Press the SIG LEV key three times. The start-up screen appears and shortly thereafter the ECHO OFFSET display appears.

ECHO OFFSET	
50kHz=	0(-99~+99)
200kHz=	0(-99~+99)
▲▼ :	50kHz
- + :	200kHz

Figure 2-9 Echo offset display

3. Operate appropriate key among [▲], [▼], [+] or [-] to set level. The default echo offset is 40 for 50 kHz; 0 for 200 kHz.
4. Press the POWER key to escape.

INTERPRETING THE DISPLAY

3.1 Zero Line

The zero line (sometimes referred to as the transmission line) represents the transducer's position, and moves off the screen when a deep phased range is used.

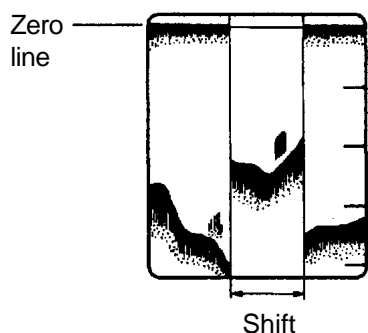


Figure 3-1 Zero line

3.2 Fish School Echoes

Fish school echoes will generally be plotted between the zero line and the bottom. Usually the fish school/fish echo is weaker than the bottom echo because its reflection property is much smaller compared to the bottom. The size of the fish school can be ascertained from the density of the display.

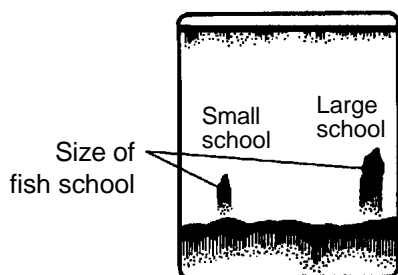


Figure 3-2 Fish school echoes

3.3 Bottom Echo

Echoes from the bottom are normally the strongest and are displayed in reddish-brown color (in default color arrangement) but the color and width will vary with bottom composition, water depth, frequency, sensitivity, etc.

In a comparatively shallow depth, a high gain setting will cause a second or sometimes a third or a fourth echo to be displayed at the same interval between them below the first echo trace. This is because the echo travels between the bottom and the surface twice or more in shallow depths.

The color of the bottom echo can be used to help determine the density of the bottom materials (soft or hard). The harder the bottom, the wider the trace. If the gain is set to show only a single bottom echo on mud, a rocky bottom will show a second or third bottom return. The range should be chosen so the first and second bottom echoes are displayed when bottom hardness is being determined.

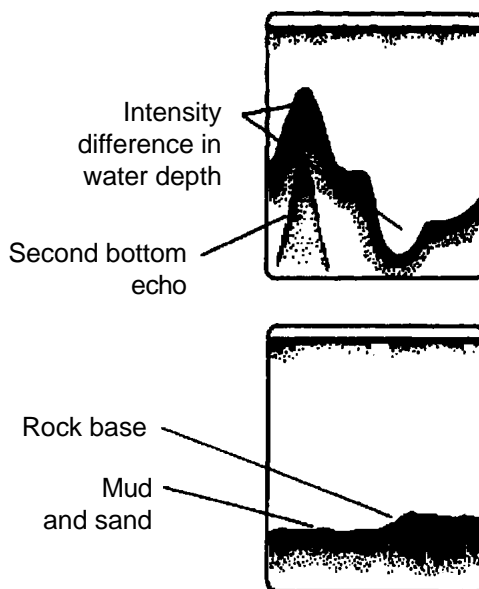


Figure 3-3 Bottom echoes

3.4 Surface Noise/Aeration

When the waters are rough or the boat passes over a wake, surface noise may appear near the zero line. As surface turbulence is acoustically equivalent to running into a brick wall, the bottom echo will be displayed intermittently. Similar noise sometimes appears when a water temperature difference (thermocline) exists. Different species of fish tend to prefer different temperature zones, so the thermocline may be useful to help identify target fish. 200 kHz tends to show shallow thermoclines better than 50 kHz.

In rough waters the display is occasionally interrupted due to below-the-ship air bubbles obstructing the sound path. This also occurs when the boat makes a quick turn or reverses movement. Lowering the picture advance speed may reduce the interruption. However, reconsideration of the transducer installation may be necessary if the interruption occurs frequently.

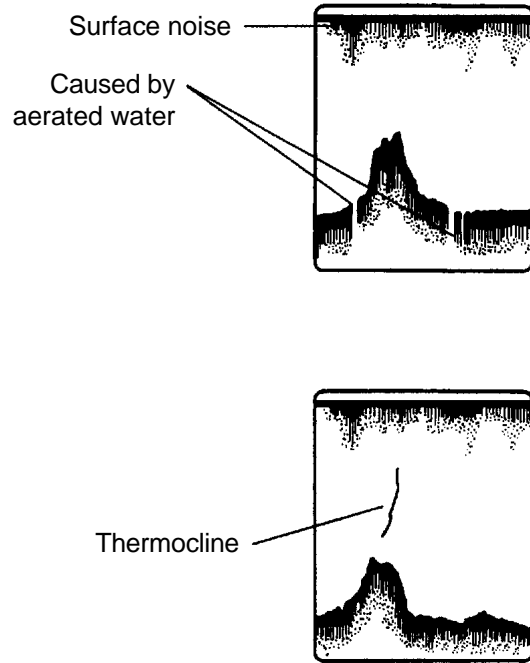


Figure 3-4 Surface noise/aeration

MAINTENANCE & TROUBLESHOOTING

WARNING

Do not open the cover.

There are no user-serviceable parts inside. Refer any repair work to a qualified technician.

4.1 Checking

Regular maintenance is essential for good performance. Checking the items listed in the table below on a regular basis will keep the equipment in good shape for years to come.

Table 4-1 Checking

Item	Action
Cable run	If conductors are exposed, replace cable.
Power cable, transducer cable plug	If loosened, tighten.
Display unit ground	If corroded, clean.
Ship's mains voltage	If out of rating, correct problem.

4.2 Cleaning the Display Unit

Dust or dirt on the display unit can be removed with a soft cloth. If desired a water-moistened cloth may be used. Do not use chemical cleaners to clean the display unit; they can remove paint and markings.

4.3 Transducer Maintenance

Marine life on the transducer face will result in a gradual decrease in sensitivity. Check the transducer face for cleanliness each time the boat is dry-docked. Carefully remove any marine life with a piece of wood or fine-grade sandpaper.

4.4 Replacing the Fuse

The fuse on the power cable protects the system from reverse polarity of the ship's mains and equipment fault. If the fuse blows, find the cause before replacing it. Use only a 3A fuse. Using the wrong fuse will damage the unit and void the warranty.

WARNING

Use only a 3A fuse.

Use of a wrong fuse can result in equipment damage and void the warranty.

4.5 Troubleshooting

The table below provides simple troubleshooting procedures which you may follow to restore normal operation. If you cannot restore normal operation, contact your dealer.

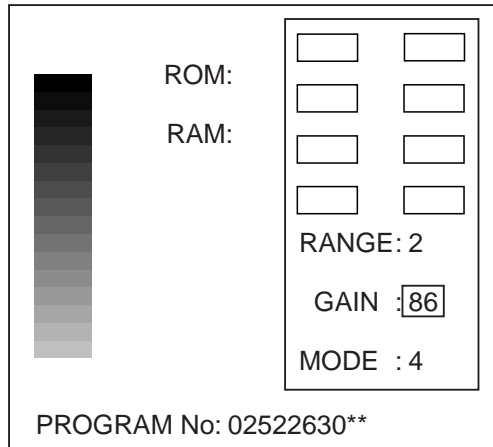
Table 4-2 Troubleshooting

If...	Then check...
neither echo nor fixed range scale appears	<ul style="list-style-type: none"> • battery voltage. • fuse. • power supply. • power cable.
no echo appears but fixed range scale appears	<ul style="list-style-type: none"> • if display advance speed is set to STOP. • transducer plug.
echo appears but no zero line	<ul style="list-style-type: none"> • if range shifting is set to 0.
sensitivity is low	<ul style="list-style-type: none"> • gain setting. • if air bubbles are present or marine life is stuck to the transducer. • if water is dirty. • if bottom is too soft to return an echo.
there is extreme interference or noise	<ul style="list-style-type: none"> • if transducer or cable is close to engine. • if unit is properly grounded. • if other echo sounders of the same frequency as own are being operated nearby.
there is no or unrealistic speed/temperature readout	<ul style="list-style-type: none"> • sensor plug.
there is no or unrealistic ship's position readout	<ul style="list-style-type: none"> • connection between sounder and navigator. • navigator itself.

4.6 Self Test

The self test checks the ROM, RAM, color bar and keyboard for proper operation. You may start the self test as follows:

1. Turn on the power while pressing the [-] key. Release the keys when the following display appears:



** = Version no.

Figure 4-1 Self test display

2. The ROM and RAM are checked and the results are displayed as OK or NG (No Good).
3. Press and release each key (except the POWER key) one by one. If the key is normal, its on-screen location lights in black and the buzzer sounds while the key is pressed.
4. Operate the controls. The control setting indication should be the same as actual control setting.

4.7 Test Pattern

This feature tests for proper display of colors.

1. Turn on the power while pressing any key except [+], [-], [▲] or [▼].
2. Press the BRILL key three times. Press the BRILL key again to change the test pattern as below.

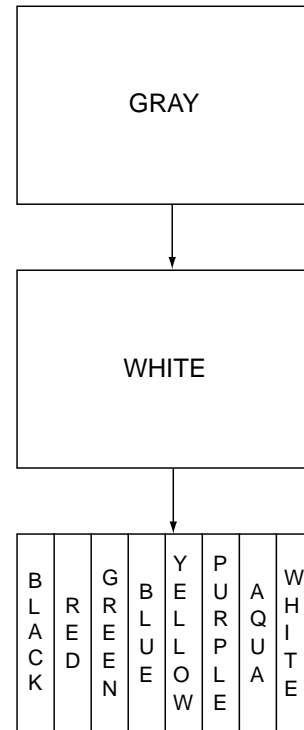


Figure 4-2 Test patterns

3. Press the POWER key to escape.

4.8 Clearing the Memory

The memory (all menu settings) can be cleared to start afresh. All default menu settings are restored when the memory is cleared. For your reference all default settings are shown in the menu tree at the beginning of this manual.

1. Turn on the power while pressing the [▲] key. Release the keys when the following display appears:

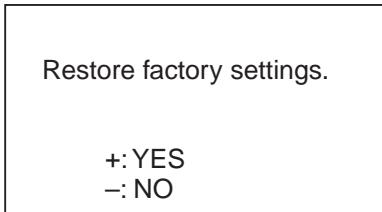


Figure 4-3 Clear memory display

2. Press the [+] key to clear the memory. The following display appears while data is being cleared:

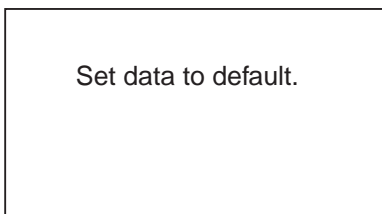


Figure 4-4 Display while memory is being cleared

3. The Optional mode menu appears.

SPECIFICATIONS OF COLOR LCD SOUNDER FCV-581L

This equipment is a color LCD video sounder which has a large variety of functions, all contained in a splash-proof rugged diecasting aluminum case that is compact to fit small boats.

1. GENERAL

- (1) Transmit Frequency 50 kHz or 200 kHz
- (2) Output Power 600 Wrms
- (3) Tx Rate 600 pulse/min max.
- (4) Pulselength 0.2 to 3.6 ms

2. DISPLAY UNIT

- (1) Indication System 6.5-inch color TFT LCD
- (2) Echo Colors 8 or 16 colors depending on echo intensity.
Monochrome presentation is also available.
- (3) Display Mode Normal, Marker zoom, Bottom zoom, Bottom-lock expansion
- (4) Alphanumeric Data Digital display of water depth, *Water temperature,
*Ship's speed/position data
*: Speed/temperature sensor is required.

(5) Basic Display Range

Unit	Range								Range Setting
	1	2	3	4	5	6	7	8	
Meters	5	10	20	40	80	150	300	800	2 to 800
Feet	15	30	60	120	200	400	1000	2500	7 to 2500
Fathoms	3	5	10	20	40	80	150	400	1 to 400
Passi/Braza	3	5	10	30	50	100	200	500	1 to 500

- (6) Range Shift 0 to 800 m, 0 to 2500 ft, 0 to 400 fa or 0 to 450 p/b
- (7) Expansion Range Bottom lock expansion: 5/10 m
Target lock expansion: 2 m to 800 m
- (8) Picture Advance Speed 7 steps (Lines/Tx: freeze,1/16,1/8,1/4,1/2,1/1,2/1)
- (9) User Setting Interference rejecter, Clutter, Alarm, Sensitivity, Hue level, Sensitivity

3 . I/O DATA

- (1) Input Data NMEA0183(Ver.1.5/2.0), current loop
RMA: L/L, ground track speed, advance course
RMB: Waypoint bearing/distance, cross track error
RMC: L/L(GPS), ground track speed, advance course

BWC: Waypoint bearing/distance
BWR: Waypoint bearing/distance
GLL: L/L
VTG: Ground track speed, advance course
VHW: Water track speed, advance course
MTW: Water temperature
XTE: Cross track error

(2) Output Data

NMEA0183(Ver.1.5/2.0), RS-422, output period: 2 sec.
SDDBT(Ver1.5): Depth (ft, m, fa)
SDDPT(Ver2.0): Depth (m)
YCMTW*: Water temperature
VWVHW*: Water track speed
*: Speed/temperature sensor is required.

4. POWER SUPPLY

(1) Voltage and Current 12 - 24 VDC: 1.5 - 0.5 A

5. DIMENSIONS AND MASS

See Outline Drawing

6. ENVIRONMENTAL CONDITION

(1) Temperature -15 °C to +55 °C
(2) Relative Humidity 95% or less at 40 °C
(3) Waterproofing IEC IPX5
(4) Category of Equipment Units
 Display Unit: To be installed in a protected area

7. COATING COLOR

(1) Display Unit Panel: N3.0 Newtone No.5
 Chassis: 2.5GY5/1.5

INDEX

A

A-scope display 9
ALARM key 11
Alarm zone width 12
Automatic operation 7

B

Basic range setting 14
Bearing reference 14
Bottom alarm 11
Bottom echo 17
Bottom echo level 15
Bottom-lock display 4
Bottom-lock range 15
Bottom-zoom display 4
BRILL key 3
Brilliance 3

C

Cleaning 19
Clutter 10
Colors 11
Control description 1

D

Data input format 14
Demonstration display 15
Depth unit 14
Display mode 3

E

Echo offset 16

F

Fish alarm 11
Fish alarm level 14
Fish school echoes 17
Fuse replacement 19

G

GAIN control 7
Graphic display 6

H

HUE key 7

I

Indications 2

M

Marker-zoom display 4
Memory clearing 22
Menu tree iv
MODE control 3

N

Nav data display 14
Nav data enlargement 5
Nav display 5
Noise limiter 10

O

Optional mode 13

P

Picture advance speed 7
POWER key 3
Power on/off 3
Principle of operation vi

R

RANGE control 6

S

Self test 21
SHIFT keys 6
SIG LEV key 7, 8
Specifications 23
Speed indication offset 14
Speed sensor 14
Speed unit 14
Surface noise/aeration 18
System configuration v
System menu 13

T

Test pattern 21
Tone 3
Transducer maintenance 19
Trip distance resetting 6
Troubleshooting 20
TVG level 16
Tx output 14

U

User menu 9

V

VRM 8

W

Water temperature alarm 11

Water temperature graph 14

Water temperature indication offset 14

Water temperature sensor 14

Water temperature unit 14

White marker 12

Z

Zero line 17

Zoom marker 14

Zoom range 15