

FURUNO

OPERATOR'S MANUAL

GPS NAVIGATOR

MODEL GP-80



FURUNO ELECTRIC CO., LTD.
NISHINOMIYA, JAPAN

©FURUNO ELECTRIC CO., LTD.

9-52, Ashihara-cho,
Nishinomiya, Japan 662

Telephone: 0798-65-2111
Telefax: 0798-65-4200

-Your Local Agent/Dealer

All rights reserved.

Printed in Japan

FIRST EDITION : SEP 1999
M : SEP. 17, 1999

(TATA)

PUB. No. OME-43740
GP-80





SAFETY INSTRUCTIONS

"**DANGER**", "**WARNING**" and "**CAUTION**" notices appear throughout this manual. It is the responsibility of the operator and installer of the equipment to read, understand and follow these notices. If you have any questions regarding these safety instructions, please contact a FURUNO agent or dealer.



DANGER

This notice indicates a potentially hazardous situation which, if not avoided, will result in death or serious injury.



WARNING

This notice indicates a potentially hazardous situation which, if not avoided, could result in death or serious injury.



CAUTION

This notice indicates a potentially hazardous situation which, if not avoided, could result in minor or moderate injury, or property damage.



SAFETY INFORMATION FOR THE OPERATOR

WARNING



Do not open the cover of the equipment.

This equipment uses high voltage electricity which can shock, burn or cause death. Only qualified personnel should work inside the equipment.

Do not disassemble or modify the equipment.

Fire, electrical shock or serious injury can result.

Immediately turn off the power at the ship's mains switchboard if water or foreign object falls into the equipment or the equipment is emitting smoke or fire.

Continued use of the equipment can cause fire, electrical shock or serious injury.

CAUTION

Do not place liquid-filled containers on the top of the equipment.

Fire or electrical shock can result if a liquid spills into the equipment.

Do not place heater near the equipment.

Heat can melt the power cord, which can result in fire or electrical shock.

Do not operate the unit with wet hands.

Electrical shock can result.

Use the correct fuse.

Use of the wrong fuse can cause fire or equipment damage.

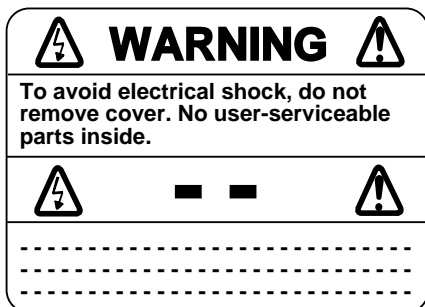
No single navigation aid (including this unit) should ever be relied upon as the exclusive means for navigating your vessel.

The navigator is responsible for checking all aids available to confirm his position. Electronic aids are intended to assist, not replace, the navigator.

Use of an autopilot with this unit, to provide automatic steering to destination, does not eliminate the need to maintain a watch.

Always maintains a vigilant watch to prevent collision or grounding.

WARNING Label attached



Name : Warning Label (1)
Type : 86-003-1011-0
Code No. : 100-236-230

TABLE OF CONTENTS

FOREWORD	v
-----------------------	----------

SYSTEM OVERVIEW	1
------------------------------	----------

1. OPERATIONAL OVERVIEW

1.1 Control Description	1-1
1.2 Turning On and Off the Power	1-2
1.3 Adjusting Display Contrast and Brilliance	1-3
1.4 Selecting the Display Mode	1-3
1.5 Chart Icons	1-6

2. TRACK

2.1 Enlarging/Shrinking the Display	2-1
2.2 Selecting Display Orientation	2-1
2.3 Shifting the Cursor	2-1
2.4 Shifting the Display	2-2
2.5 Centering Cursor Position	2-2
2.6 Centering Own Ship's Position	2-2
2.7 Stopping/Starting Plotting and Recording of Track	2-2
2.8 Erasing Track	2-3
2.9 Selecting Track Plotting Interval	2-4
2.10 Apportioning the Memory	2-5
2.11 Selecting Bearing Reference	2-6

3. MARKS

3.1 Entering/Erasing Marks	3-1
3.2 Selecting Mark Shape	3-2
3.3 Connecting Marks (selecting mark connection line)	3-2
3.4 Entering Event Marks	3-3
3.5 Selecting Event Mark Shape	3-3
3.6 Entering the MOB Mark	3-4

4. NAVIGATION PLANNING

4.1 Registering Waypoints	4-1
4.2 Editing Waypoints	4-4
4.3 Deleting Waypoints	4-5
4.4 Registering Routes	4-5
4.5 Deleting Route Waypoints	4-6
4.6 Replacing Route Waypoints	4-7
4.7 Deleting Routes	4-7

5. STARTING FOR DESTINATION

5.1 Setting Destination	5-1
5.2 Cancelling Destination	5-5
5.3 Erasing Route Waypoints (flags)	5-6
5.4 Finding Range and Bearing Between Two Points	5-7

6. SETTING UP VARIOUS DISPLAYS

6.1 Selecting Data to Display on the Data Display	6-1
6.2 Selecting Position Format	6-2
6.3 Demo Display	6-4

7. ALARMS

7.1 Arrival Alarm, Anchor Watch Alarm	7-1
7.2 Cross Track Error (XTE) Alarm	7-2
7.3 Ship's Speed Alarm	7-3
7.4 Trip Alarm	7-3
7.5 Water Temperature Alarm	7-4
7.6 Depth Alarm	7-4

8. MENU SETTINGS

8.1 GPS Menu	8-1
8.2 Selecting Units of Measurement	8-3
8.3 Mark, Character Size and Brilliance	8-4
8.4 Settings for Connection of Navigator	8-6

8.5 Receiving Data from Personal Computer	8-8
8.6 DGPS Settings	8-10
8.7 Displaying GPS Monitor Displays .	8-12

9. MAINTENANCE & TROUBLESHOOTING

9.1 Clearing the Memory	9-1
9.2 Preventative Maintenance	9-2
9.3 Error Messages	9-2
9.4 Troubleshooting	9-4
9.5 Self Tests	9-5

10. INTRODUCTION TO GPS

10.1 What is GPS?	10-1
10.2 How the GPS Receiver Calculates Position.....	10-1
10.3 Position-fixing Accuracy (HDOP).....	10-2

APPENDIX

Specifications.....	A-1
Time Differences	A-3
Geodetic Chart List.....	A-4
Loran C Chains	A-5
Decca Chains	A-6
DGPS Reference Station List	A-7
Glossary	A-10
INDEX.....	A-13

Declaration of conformity to type

FOREWORD

A Word to GP-80 Owners

Congratulations on your choice of the FURUNO GP-80 GPS Navigator. We are confident you will see why the FURUNO name has become synonymous with quality and reliability.

For over 40 years FURUNO Electric Company has enjoyed an enviable reputation for innovative and dependable marine electronics equipment. This dedication to excellence is furthered by our extensive global network of agents and dealers.

Your navigator is designed and constructed to meet the rigorous demands of the marine environment. However, no machine can perform its intended function unless operated and maintained properly. Please carefully read and follow the recommended procedures for operation and maintenance.

We would appreciate hearing from you, the end-user, about whether we are achieving our purposes.

Thank you for considering and purchasing FURUNO equipment.

Features

The GP-80 GPS Navigator is a totally integrated GPS receiver and video plotter consisting of a display unit and an antenna unit. The high sensitivity receiver tracks up to eight satellites simultaneously. An 8-state Kalman filter ensure optimum accuracy in determination of vessel position, course and speed.

In most cases the operator need do no more than turn on the power to find position.

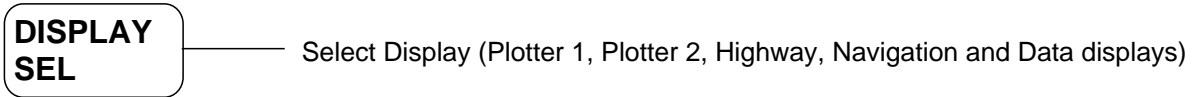
The main features of the GP-80 are

- Comprehensive navigation data displays
- Storage for 200 waypoints and 30 routes
- Alarms: Arrival, Anchor Watch, Cross-track Error, Ship's Speed, Water Temperature, Depth, and Trip
- Man overboard feature records latitude and longitude coordinates at time of man overboard and provides continuous updates of range and bearing to that point
- DGPS capability—with built-in DGPS beacon kit, or accepts DGPS correction data from external DGPS beacon receiver
- Menu-driven operation
- Bright 122 x 92 mm LCD with temperature compensated tone and brilliance adjustment
- Power consumption is a low 10 W.
- Provision for connection of autopilot (option)—steering data output to autopilot
- Digital display of water temperature and depth with connection of video sounder (with NMEA input)
- Memory stores 2,000 points of track and marks
- "Highway" display provides perspective view
- Position may be shown in latitude and longitude or LOP (Loran or Decca)
- Four connectors for optional equipment two IEC-1162-1/NMEA 0183 I/O, one IEC-1162-1/NMEA 0183 (or log) output and one DGPS for personal computer) I/O
- Navaid information (lighthouse data, lighted buoys, etc.) can be displayed by downloading database from personal computer (option)

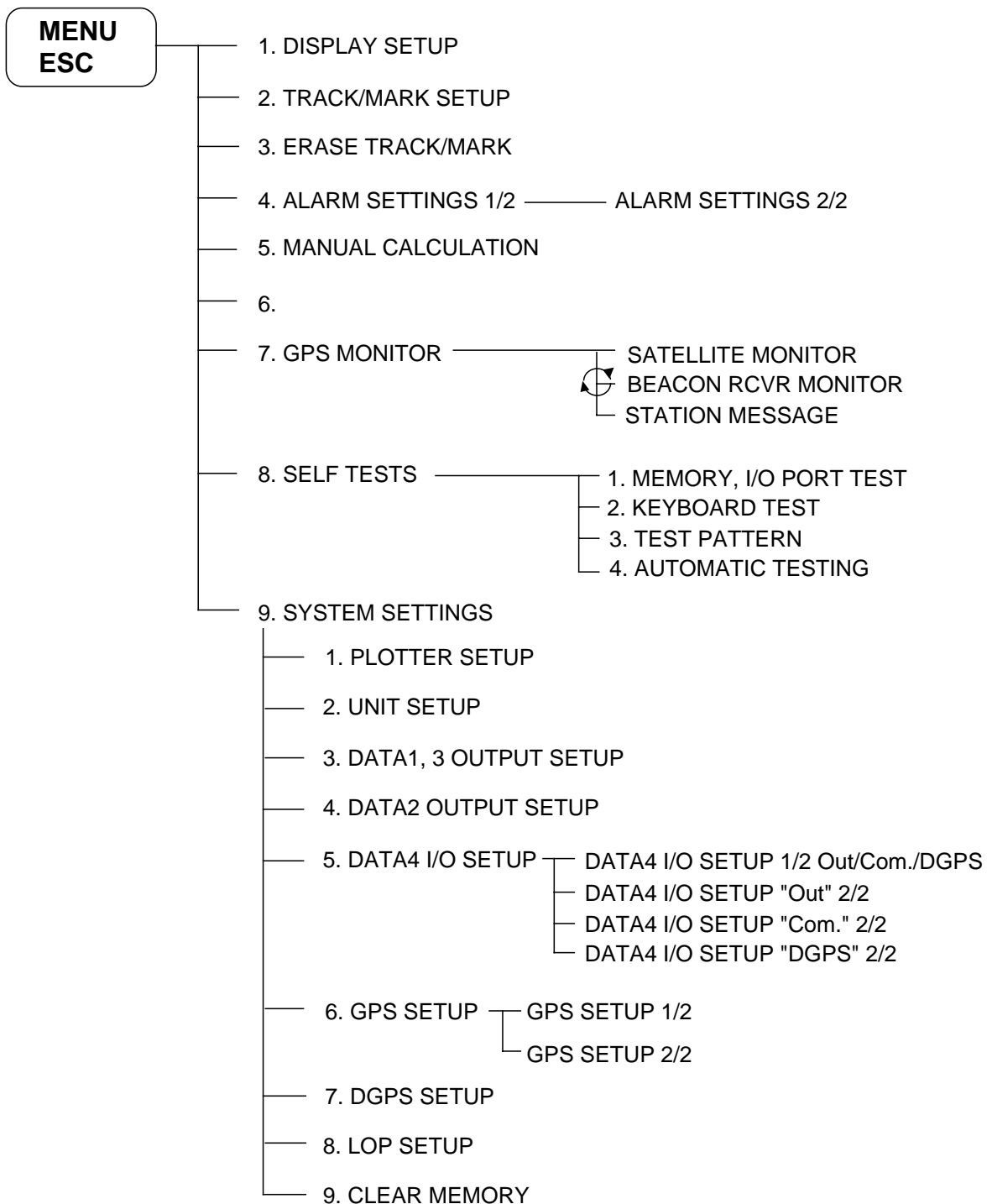
SYSTEM OVERVIEW

1. Menu Tree

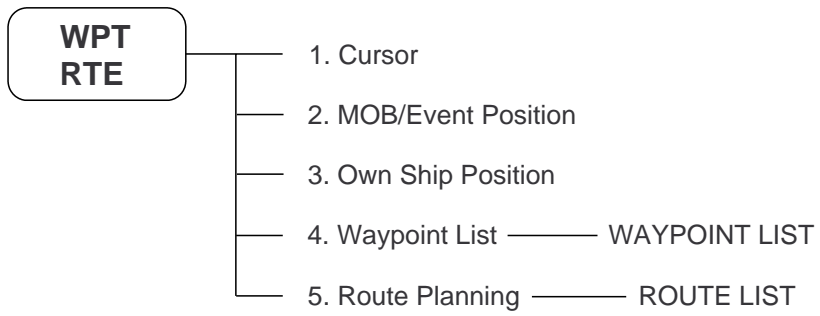
Display selection menu



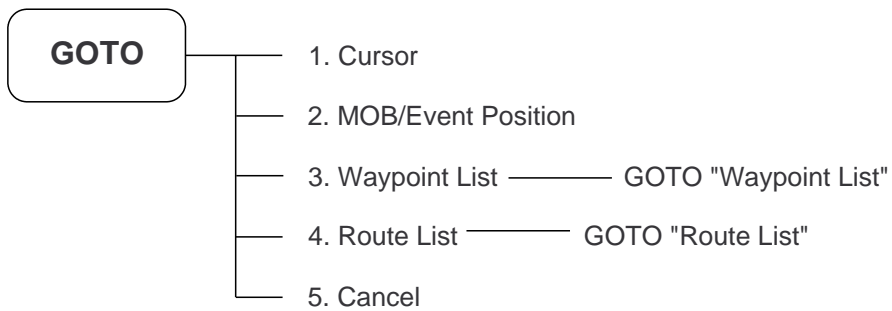
Main menu



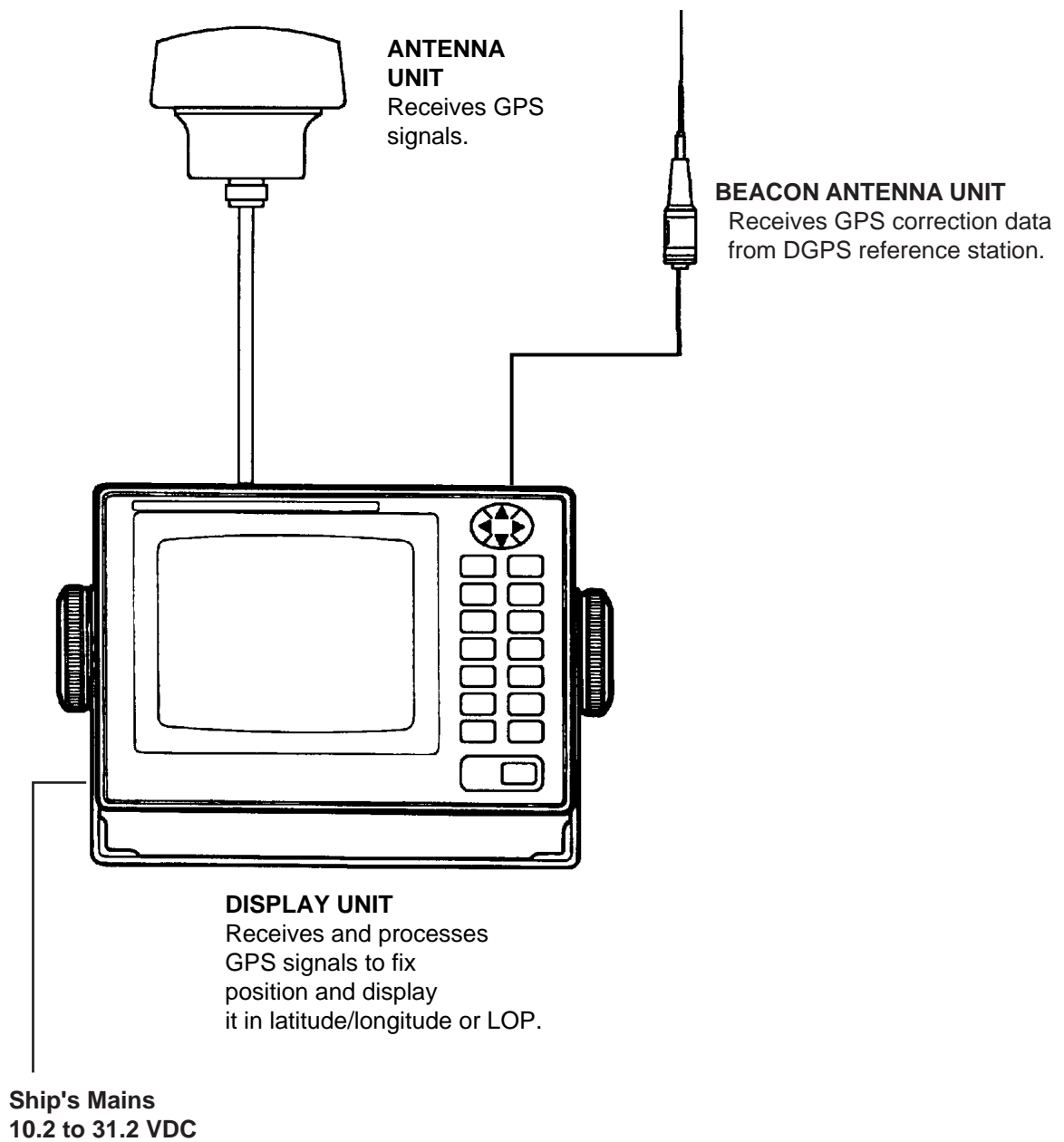
Waypoint, route menu



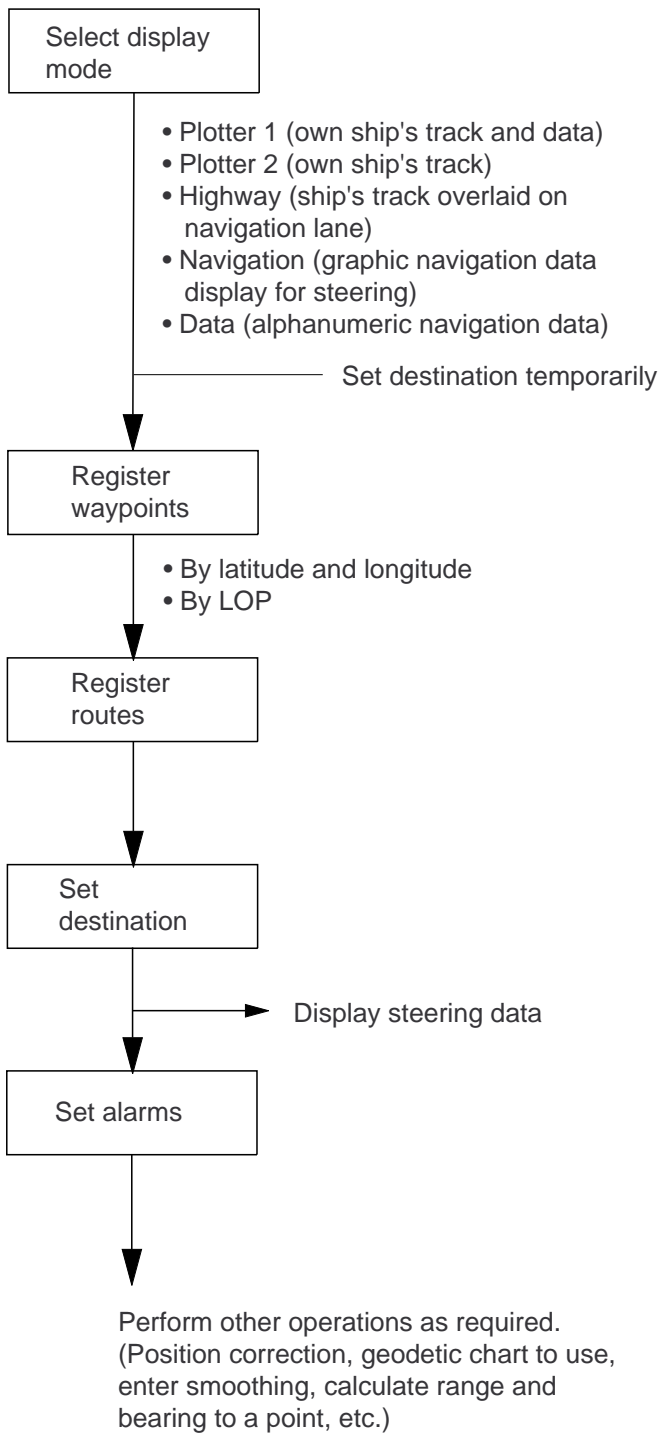
GOTO menu



2. System Configuration



3. Operation Flow Chart



1. OPERATIONAL OVERVIEW

1.1 Control Description

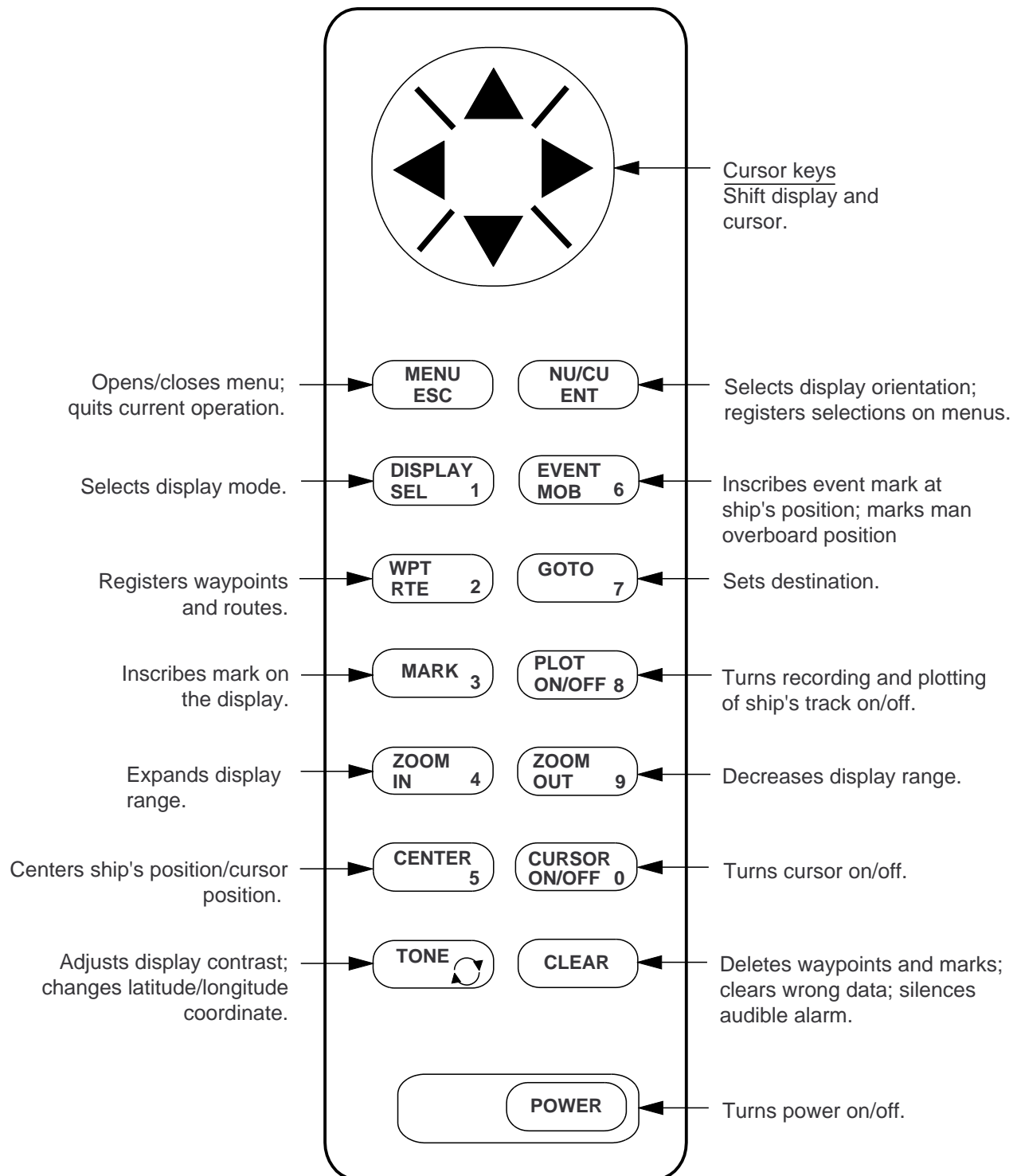


Figure 1-1 Control panel

1.2 Turning On and Off the Power

The GP-80 takes about two minutes to find position when turned on for the very first time. Thereafter it takes about 20 seconds to find position each time the power is turned on.

CAUTION

A GPS position fix can suddenly be very inaccurate. Always check position against other sources to confirm position. GPS is under the control of the US Department of Defense. While providing highly accurate position, position accuracy for civil users is degraded for reasons of national security.

Turning on the power

Press the [POWER] key.

The unit tests the PROGRAM MEMORY, SRAM and battery for proper operation and shows the results on the display. If equipped with the internal beacon receiver, "BEACON RCVR INSTALLED" appears at the bottom of the display. The unit starts up with the last used display mode.

PROGRAM MEMORY = OK
 SRAM = OK
 Internal Battery = OK

BEACON RCVR INSTALLED*
 DATA #3 : LOG PULSE OUTPUT

Several seconds later (A) ↓

*: This indication is only when beacon receiver is installed.

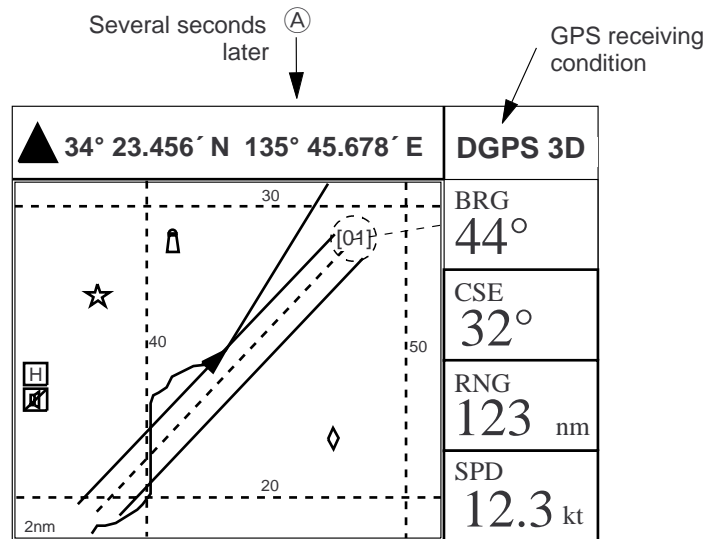


Figure 1-2 Appearance of display when turning on the power

When turning on the power the following occurs:

20 seconds after turning on the power, accurate position (in latitude and longitude) appears on the display.

If position could not be found, "NO FIX" appears at the GPS receiver condition window. When PDOP value exceeds 6 in the 3D mode or HDOP value exceeds 4 in the 2D mode, "DOP" appears to indicate abnormal fixing and the position indication could not be updated.

When the satellite signal is being received normally, one of the indications shown in Table 1-1 appears depending on equipment setting and GPS receiver state.

Table 1-1 GPS receiver indication

Equipment setting	GPS receiver state indication
2D	GPS 2D (normal)
3D	GPS 3D (normal)
Differential 2D	DGPS 2D (normal)
Differential 3D	DGPS 3D (normal)

Note 1: When PDOP value exceeds 6 in the 3D mode, the position fixing method is automatically changed to 2D.

Note 2: The "DEMO" icon appears when the display is in the demonstration mode. To return to normal mode, turn off the power and turn it on while pressing and holding down the [NU/CU ENT] key.

Note 3: Refer to page 10-2 about HDOP and PDOP.

Turning the power off

Press the [POWER] key.

The next time you turn on the power the unit starts up with the last used display mode.

1.3 Adjusting Display Contrast and Brilliance

- 1) Press the [TONE] key. The display shown in Figure 1-3 appears.

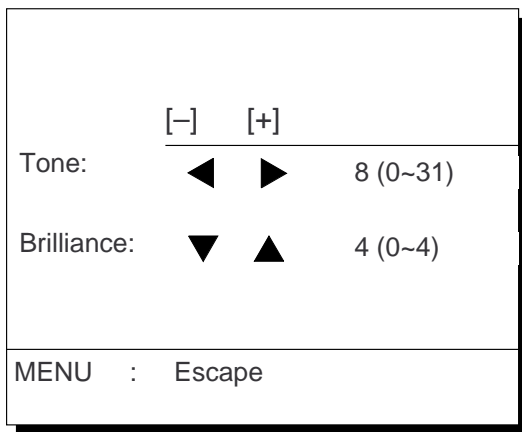


Figure 1-3 Screen for adjustment of display contrast and brilliance

- 2) **To adjust contrast**, press ◀ or ▶. Current setting and setting range (0–31) are shown to the right of "▶".
- 3) **To adjust brilliance**, press ▲ or ▼. Current setting and setting range (0–4) are shown to the right of "▲".

Note: Operate cursor keys within 10 seconds after pressing the [TONE] key. Otherwise, the screen for adjustment of contrast and brilliance will be cleared.

1.4 Selecting the Display Mode

- 1) Press the [DISPLAY SEL] key. The display shown in Figure 1-4 appears.

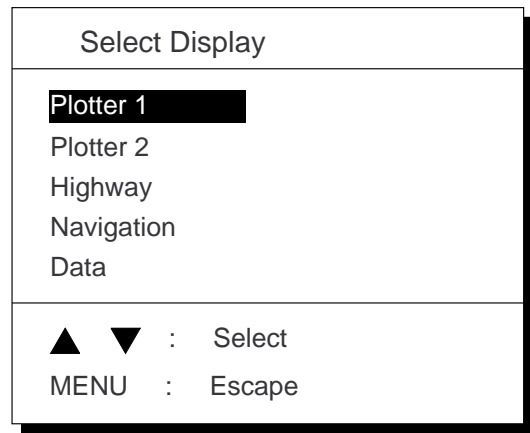
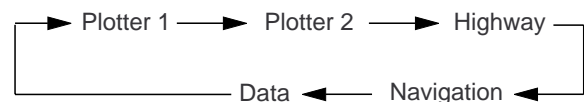


Figure 1-4 Screen for selection of display mode

- 2) Press the [DISPLAY SEL] key, ▲ or ▼ to select display mode. (When the [DISPLAY SEL] key is pressed, the display mode changes in sequence shown below.) Selected display mode appears about 15 seconds later.



Sample displays of each display mode are shown in the figures on the next several pages.

Plotter 1 display

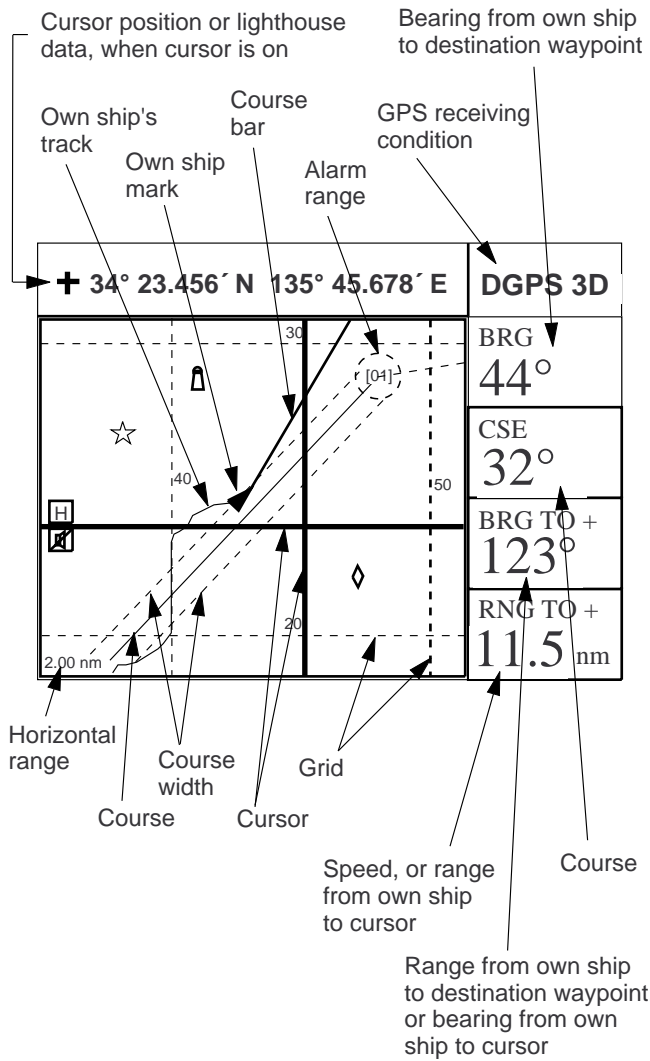


Figure 1-5 Plotter 1 display

Plotter 2 display

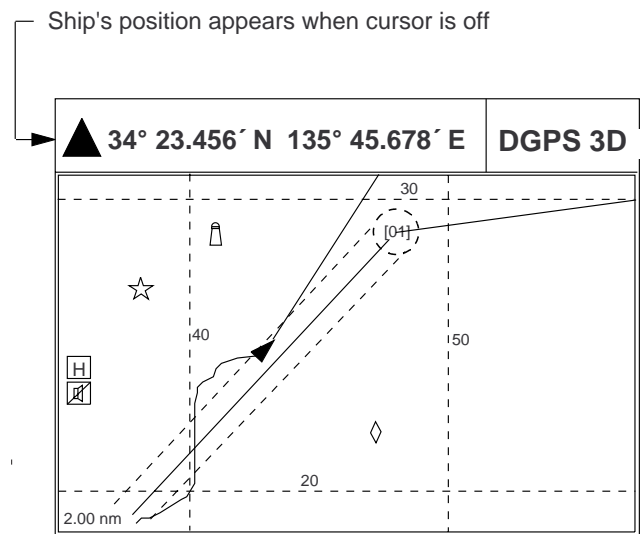


Figure 1-6 Plotter 2 display

Highway display

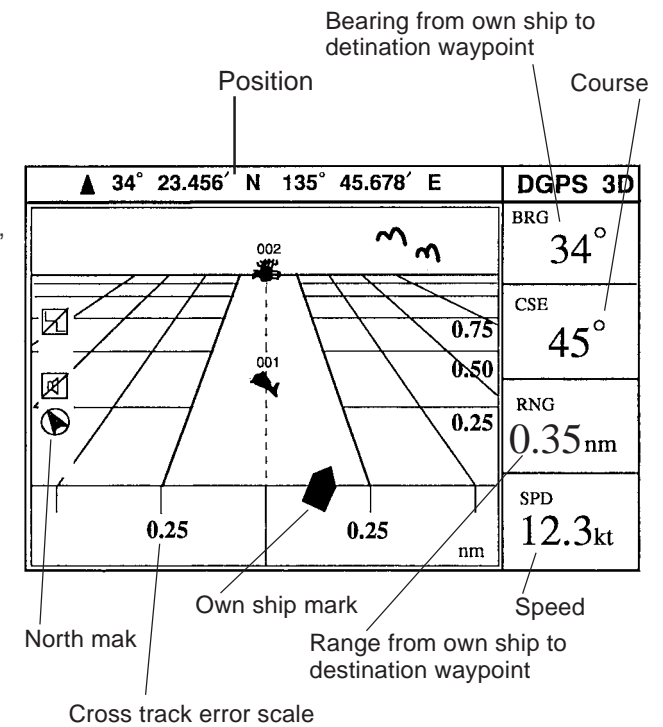


Figure 1-7 Highway display

Navigation display

1) No autopilot connection

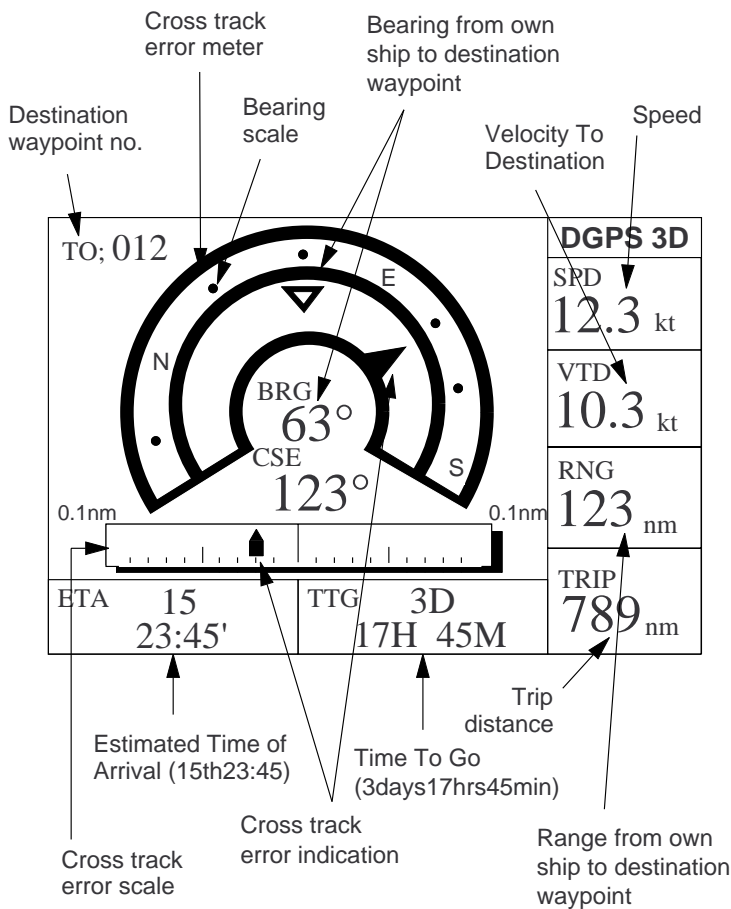


Figure 1-9 Navigation display, no autopilot connection

2) With autopilot connection, automatic mode

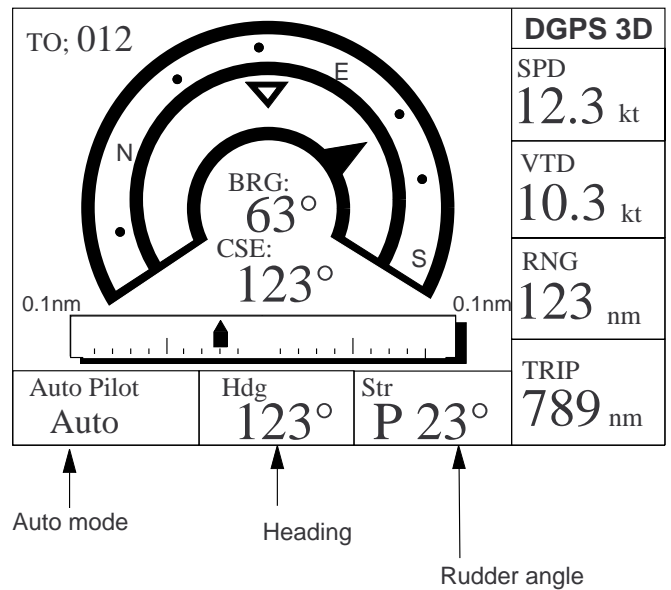


Figure 1-9 Navigation display, with autopilot connection, automatic mode

3) Autopilot connection, modes other than automatic mode (manual, nav, etc.)

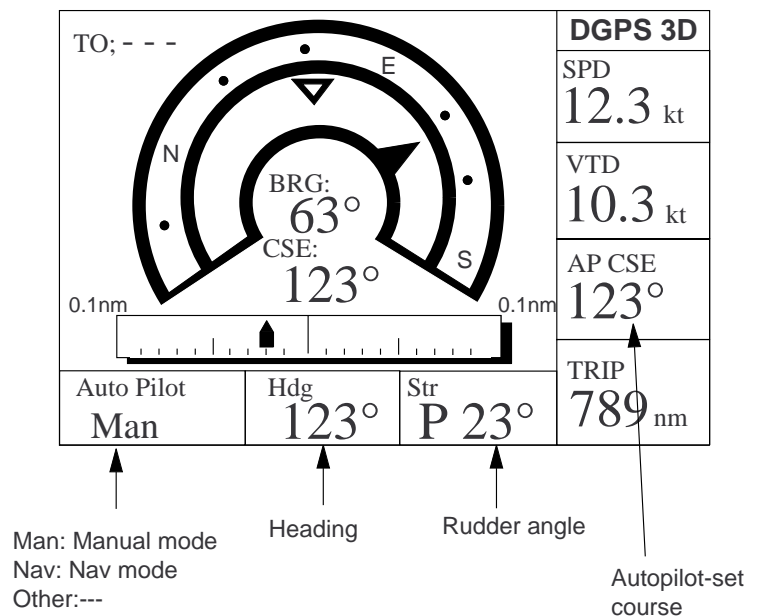


Figure 1-10 Navigation display, with autopilot connection, modes other than the automatic mode

Data display

(Window assignment and size of characters are user-definable)

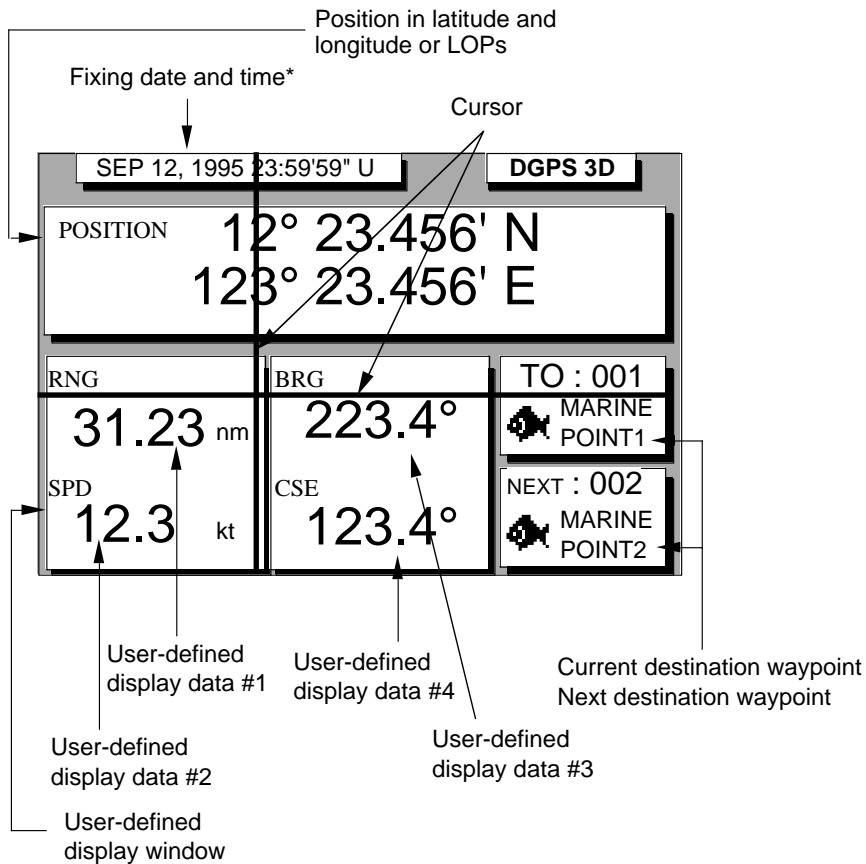


Figure 1-11 Data display mode

*: "-" appears until calculating position after turning on the power. If fixing error occurs this indication stops.

1.5 Chart Icons

Various icons appear on the display to alert you to equipment status.



: L/L position offset applied.



: Track recording tuned off.



: Alarm is violated.



: North mark.



: Demonstration display.

2. TRACK

2.1 Enlarging/Shrinking the Display

You may enlarge and shrink the display on the Plotter 1 and Plotter 2 displays, with the [ZOOM IN] and [ZOOM OUT] keys. The horizontal range is available among 0.25, 0.5, 1, 2, 4, 8, 16, 32, 64, 128 and 192 nautical miles for plotter 1 and 0.36, 0.71, 1.42, 2.84, 5.69, 11.38, 22.76, 45.51, 91.02, 182.04, 273.07 nautical miles for plotter 2 display.

The [ZOOM IN] key enlarges the display and the [ZOOM OUT] key shrinks it. Each time a zoom key is pressed the display range appears at the center of the display for about three seconds.

2.2 Selecting Display Orientation

Display orientation can be selected on the Plotter 1, Plotter 2 and Highway displays, with the [NU/CU ENT] key. Two display orientations are available: north-up and course-up.

North-up display

In the north-up display, true north (0°) is at the top of the display. Own ship moves on the display in accordance with true speed and true motion. Land is stationary.

Course-up display

Destination set

The destination is at the top of the display and the north mark (▲) appears at the left side of the display.

Destination not set

Ship's heading or course is at the top of

the display. The north mark appears at the left side of the display.

2.3 Shifting the Cursor

The cursor can be shifted with the cursor keys.

- 1) Press the [CURSOR ON/OFF] key to turn on the cursor.
- 2) Press the cursor keys.

The cursor moves in the direction of the cursor key pressed. When the cursor reaches the edge of the display, the display shifts in the direction opposite.

Data and cursor state

Cursor state determines what data are shown on the display.

Cursor turned on, cursor data

Cursor position is displayed in latitude and longitude (depending on menu setting) at the top of the display. The range and bearing from own ship to the cursor appear at the right hand side of the display, when in the Plotter 1 display.

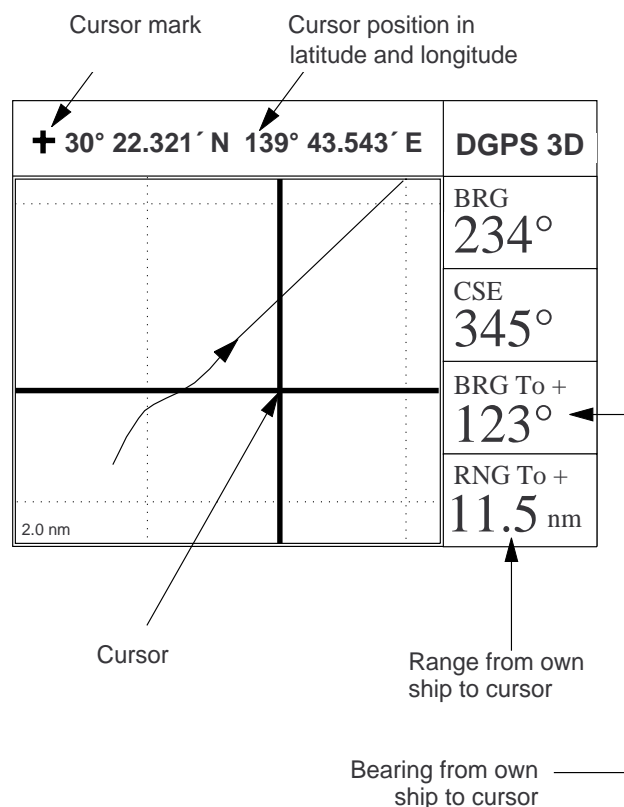


Figure 2-1 Data displayed when the cursor is on

Cursor turned off

Ship's position (in latitude and longitude or LOPs), speed and course appear on the display.

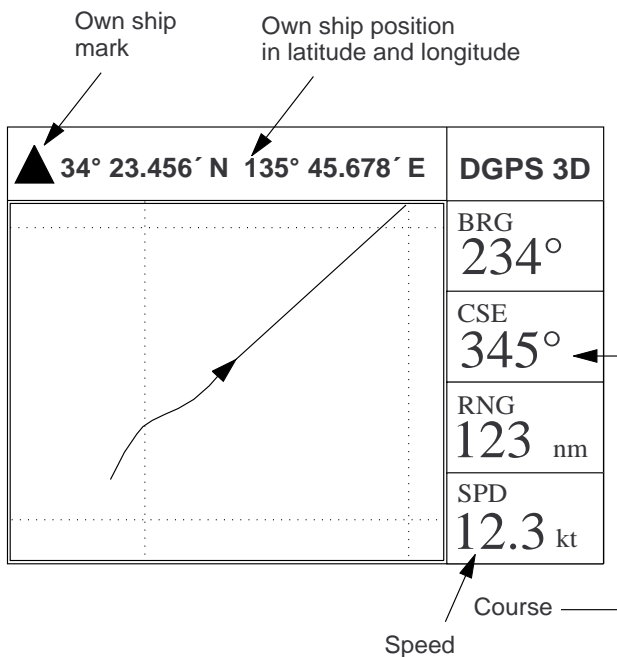


Figure 2-2 Data displayed when the cursor is turned off

2.4 Shifting the Display

The display can be shifted on the Plotter 1 and Plotter 2 displays, with the [CURSOR ON/OFF] key. When own ship tracks off the display it is automatically returned to the screen center.

- 1) Press the [CURSOR ON/OFF] key to turn off the cursor.
- 2) Press the cursor keys. The display shifts in the direction of the cursor key pressed.

2.5 Centering Cursor Position

- 1) Press the [CURSOR ON/OFF] key to turn on the cursor.
- 2) Press the cursor keys to position the cursor.
- 3) Press the [CENTER] key.

2.6 Centering Own Ship's Position

- 1) Press the [CURSOR ON/OFF] key to turn off the cursor.
- 2) Press the [CENTER] key.

2.7 Stopping/Starting Plotting and Recording of Track

The GP-80 stores 2,000 points of track and marks. When the memory becomes full the oldest track is erased to make room for the latest. Thus you may want to conserve the memory when, for example, you are returning to port or are anchored.

Procedure

Press the [PLOT ON/OFF] key to start/stop recording and plotting of track.

When plotting is resumed

"Resuming track plot" appears at the center of the display for about three seconds.

When plotting is stopped

"Stopping track plot" appears at the center of the display for about three seconds and "[H]" appears at the left side of the display. ("H" does not appear on the Navigation and Data displays.)

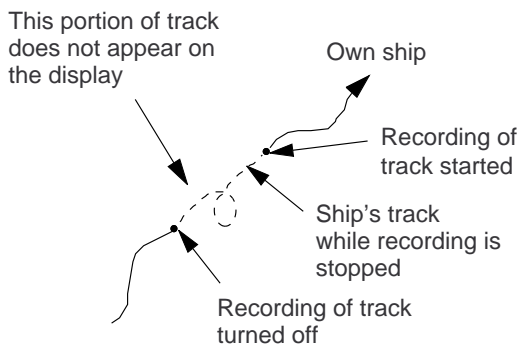
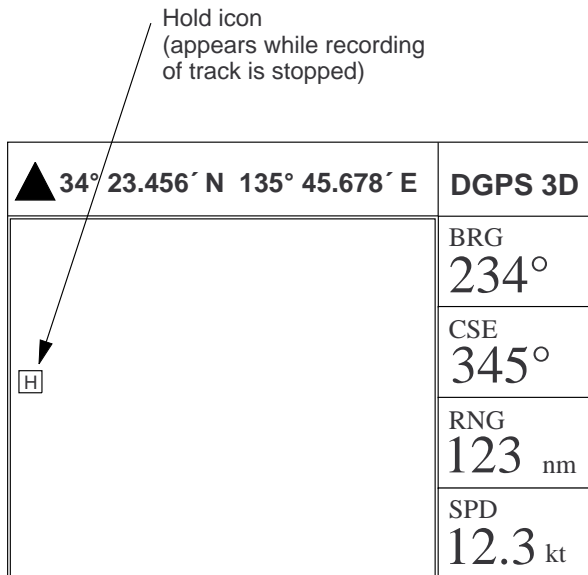


Figure 2-3 Track not plotted or recorded when plotting is stopped

2.8 Erasing Track

The track stored in the memory and displayed on the screen can be erased.

<h1>CAUTION</h1>
Track cannot be restored once erased. Be absolutely sure you want to erase all track.

- 1) Press the [MENU ESC] key. The MAIN MENU appears.

MAIN MENU	
<ol style="list-style-type: none"> 1. DISPLAY SETUP 2. TRACK/MARK SETUP 3. ERASE TRACK/MARK 4. ALARM SETTINGS 5. MANUAL CALCULATION 6. 7. GPS MONITOR 8. SELF TESTS 9. SYSTEM SETTINGS 	
ENT: Enter	MENU: Escape

Figure 2-4 MAIN MENU

- 2) Press [3] to select ERASE TRACK/MARK.

ERASE TRACK/MARK	
Erase Track	<input type="checkbox"/> No <input type="checkbox"/> Yes
Erase Mark	<input checked="" type="checkbox"/> No <input type="checkbox"/> Yes
Track Pts. Used:	345/1000 Pt
Mark Pts. Used:	123/1000 Pt
▲▼▶◀ : Select MENU: Escape	

Figure 2-5 ERASE TRACK/MARK menu

- 3) Press ▲ or ▼ to select Erase Track.
- 4) Press ▶ to select Yes. The message shown in Figure 2-6 appears.

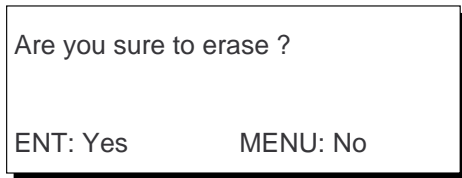


Figure 2-6 Prompt for erasure of track, mark

- 5) Press the [NU/CU ENT] key.

2.9 Selecting Track Plotting Interval

The plotting interval determines both how the track will be reconstructed on the display and track storage time. A shorter interval provides more accurate reconstruction of track line, however total storage time is reduced. The plotting interval can be selected by time or distance. Plotting by distance offers the advantage that the track is not stored when the vessel is anchored.

Plotting interval by time

The setting range for plotting by time is 00 to 60 minutes.

- 1) Press the [MENU ESC] key.
- 2) Press [2] to display the TRACK/MARK SETUP menu.

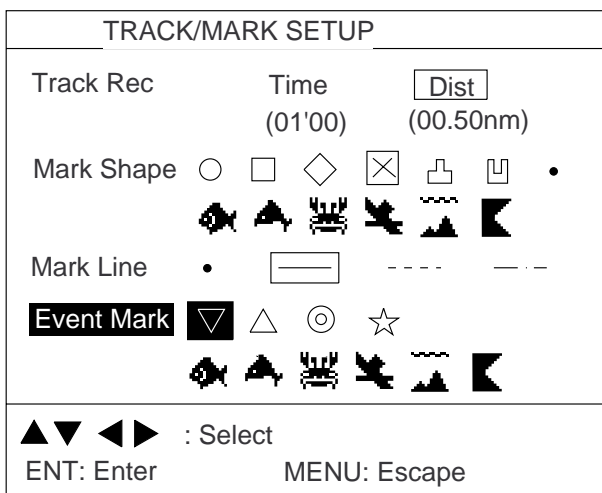


Figure 2-7 TRACK/MARK SETUP menu

- 3) Press ▲ or ▼ to select Track Rec.
- 4) Press ◀ to select Time.
- 5) Enter plotting interval in four digits. To enter 30 seconds, for example, press [0] [3] [0].
- 6) Press the [NU/CU ENT] key.
- 7) Press the [MENU ESC] key.

Plotting interval by distance

The setting range for plotting by distance is 0.01 to 99.99 nautical miles. To plot all track, enter 00.00.

- 1) Press the [MENU ESC] key.
- 2) Press [2] to display the TRACK/MARK SETUP menu.
- 3) Press ▲ or ▼ to select Track Rec.
- 4) Press ▶ to select Distance.
- 5) Enter plotting interval. To enter 0.1 nautical miles, for example, press [0] [0] [1].
- 6) Press the [NU/CU ENT] key.
- 7) Press the [MENU ESC] key.

2.10 Apportioning the Memory

The memory holds 2,000 points of track and marks and may be apportioned as you like. The default memory setting stores 1,000 points each of track and marks.

CAUTION
All data are erased whenever the memory apportion setting is changed, even when the previous value is re-entered.

To store 1,500 points of track and 500 marks, for example, do the following:

- 1) Press the [MENU ESC] key.
- 2) Press [9] to display the SYSTEM SETTINGS menu.

SYSTEM SETTINGS
1. PLOTTER SETUP
2. UNIT SETUP
3. DATA 1, 3 OUTPUT SETUP
4. DATA 2 OUTPUT SETUP
5. DATA 4 I/O SETUP
6. GPS SETUP
7. DGPS SETUP
8. LOP SETUP
9. CLEAR MEMORY
ENT: Enter MENU: Escape

Figure 2-8 SYSTEM SETTINGS menu

- 3) Press [1] to display the PLOTTER SETUP menu.

PLOTTER SETUP		
Memory Apportion	Trk = 1000 / 2000Pt	
Bearing Ref.	True	Mag
Mag Variation	Auto	Man
	(07° W)	(00° E)
Calculation	R.L	G.C
User defined #1	◀ RNG ▶	
#2	◀ SPD ▶	
#3	◀ BRG ▶	
#4	◀ CSE ▶	
ENT: Enter		MENU: Escape

Figure 2-9 PLOTTER SETUP menu

- 4) Press ▲ or ▼ to select Memory Apportion.
- 5) Enter amount of track to store, in four digits. To store 1,500 track points, for example, press [1] [5] [0] [0].
- 6) Press the [NU/CU ENT] key, or ▲ or ▼. You are asked if it is all right to erase all data.

Setting erases all data!
Are you sure to change ?
ENT: Yes MENU: No

Figure 2-10

- 7) Press the [NU/CU ENT] key.
- 8) Press the [MENU ESC] key.

2.11 Selecting Bearing Reference

Ship's course and bearing to waypoint may be displayed in true or magnetic bearing. Magnetic bearing is true bearing plus (or minus) earth's magnetic deviation.

Displaying true or magnetic bearing

The default setting displays magnetic bearings.

- 1) Press the [MENU ESC] key.
- 2) Press [9] to display the SYSTEM SETTINGS menu.
- 3) Press [1] to display the PLOTTER SETUP menu.
- 4) Press ▲ or ▼ to select Bearing Ref.
- 5) Press ◀ or ▶ to select True or Mag.
- 6) Press the [NU/CU ENT] key, ▲ or ▼.
- 7) Press the [MENU ESC] key.

Entering magnetic variation

The location of the magnetic north pole is different from the geographical north pole. This causes a difference between the true and magnetic north direction. This difference is called magnetic variation, and varies with respect to the observation point on the earth. Magnetic variation may be entered automatically or manually.

- 1) Press the [MENU ESC] key.
- 2) Press [9] to display the SYSTEM SETTINGS menu.
- 3) Press [1] to display the PLOTTER SETUP menu.
- 4) Press ▲ or ▼ to select Mag Variation.
- 5) Press ◀ or ▶ to select Auto or Man. For automatic, current variation appears in parentheses.
- 6) **For manual entry**, enter variation in two digits, referring to a nautical chart. If the variation is 10°, for example, press [1] [0].
- 7) If necessary, press the [↻] key to change coordinate from east to west or vice versa.
- 8) Press the [NU/CU ENT] key.
- 9) Press the [MENU ESC] key.

3. MARKS

3.1 Entering/Erasing Marks

Marks can be inscribed on the Plotter 1 and Plotter 2 displays. You may inscribe a mark anywhere, in one of 13 shapes. Further, can be connected with lines, to denote net location, etc.

Note 1: When the mark memory becomes full no marks can be entered. When this occurs, the buzzer sounds and the message shown below appears on the display for three seconds to alert you. To enter a mark when the mark memory is full, erase unnecessary marks.

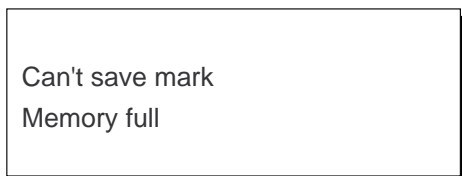


Figure 3-1

Note 2: Marks cannot be entered when there is no position data. When this occurs, the buzzer sounds and the message shown below appears on the display for three seconds to alert you. Check the antenna cable for tight connection.

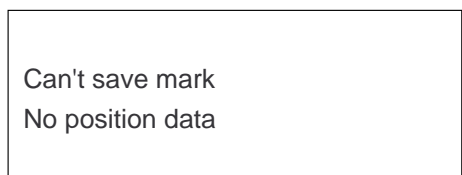


Figure 3-2

Entering marks

At own ship position

- 1) Press the [CURSOR ON/OFF] key to turn off the cursor.
- 2) Press the [MARK] key.

At cursor intersection

- 1) Press the [CURSOR ON/OFF] key to turn on the cursor.
- 2) Operate the cursor keys to place the cursor on the location for the mark.
- 3) Press the [MARK] key.

Erasing marks

CAUTION

All marks, including event marks and the MOB mark, are erased on the ERASE MARK menu. Be absolutely sure you want to erase all marks; erased marks cannot be restored.

Erasing individual marks

- 1) Place cursor on the mark to erase.
- 2) Press the [CLEAR] key.

Erasing all marks

- 1) Press [MENU ESC] and [3] to display the ERASE TRACK/MARK menu.

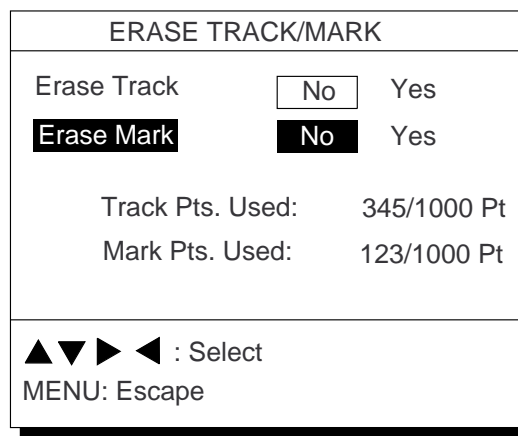


Figure 3-3 ERASE TRACK/MARK menu

- 2) Press ▲ or ▼ to select Erase Mark.
- 3) Press ▶ to select YES.

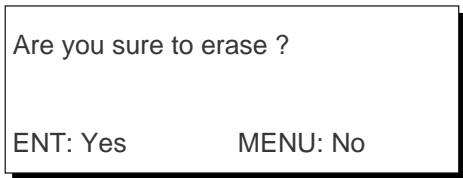


Figure 3-4

- 4) Press the [NU/CU ENT] key.
- 5) Press the [MENU ESC] key.

3.2 Selecting Mark Shape

13 mark shapes are available. Select mark shape as follows:

- 1) Press [MENU ESC] and [2] to display the TRACK/MARK SETUP menu.

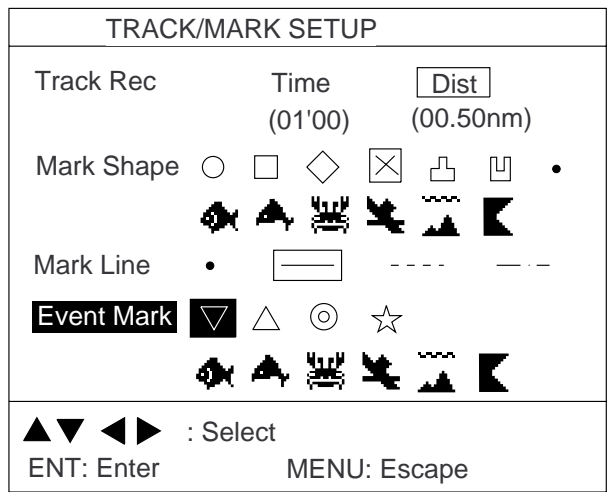


Figure 3-5 TRACK/MARK SETUP menu

- 2) Press ▲ or ▼ to select Mark Shape.
- 3) Press ◀ or ▶ to select mark shape desired.
- 4) Press the [NU/CU ENT] key.
- 5) Press the [MENU ESC] key.

The next mark entered will be inscribed in the shape selected here.

3.3 Connecting Marks (selecting mark connection line)

Marks can be connected with lines to denote net location, fishing spot, etc. Three types of connection lines are available and the "•" setting disables connection of lines.

- 1) Press [MENU ESC] and [2]
- 2) Press ▲ or ▼ to select Mark Line.
- 3) Press ◀ or ▶ to select mark line desired.
- 4) Press the [NU/CU ENT] key.
- 5) Press the [MENU ESC] key.

3.4 Entering Event Marks

Event marks can denote any important present position; for example, a good fishing spot. Event marks can be saved as ordinary marks and the unit automatically numbers them from 01 to 99.

Note 1: When the mark memory becomes full no event marks can be entered. When this occurs, the buzzer sounds and the message shown below appears on the display for three seconds to alert you. To enter an event mark when the mark memory is full, erase unnecessary event marks.

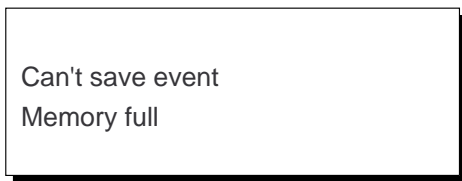


Figure 3-6

Note 2: Event Marks cannot be entered when there is no position data. When this occurs, the buzzer sounds and the message shown below appears on the display for three seconds to alert you. Check the antenna cable for tight connection.

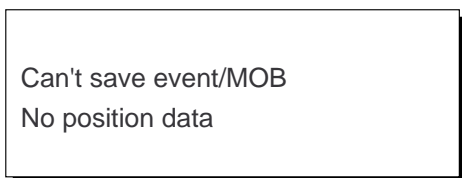


Figure 3-7

Entering event marks

- 1) Press the [EVENT MOB] key less than three seconds. The position at the exact moment the key is pressed is saved as an event position.



Figure 3-8

To erase event marks, see "3.1 Entering/Erasing Marks".

3.5 Selecting Event Mark Shape

Event marks are available in 10 shapes. Select event mark shape as follows.

- 1) Press [MENU ESC] and [2] to display the TRACK/MARK SETUP menu.
- 2) Press ▲ or ▼ to select Event Mark.
- 3) Press ◀ or ▶ to select event mark shape desired.
- 4) Press the [NU/CU ENT] key.
- 5) Press the [MENU ESC] key.

The next event mark entered will be inscribed in the shape selected here.

3.6 Entering the MOB Mark

The MOB mark denotes man overboard position. To mark man overboard position, press the [EVENT MOB] key. When the key is pressed, the position at the exact moment the key is pressed automatically becomes the destination. Further, the Plotter 1 display replaces the display in use when it is other than a plotter display.

Only one MOB mark may be entered, and each time the MOB mark is entered the previous MOB mark and its position data are written over.

Note: The MOB mark cannot be entered when there is no position data. When this occurs, the buzzer sounds and the message shown below appears on the display for three seconds to alert you. Check the antenna cable for tight connection.

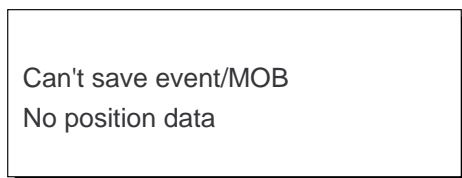


Figure 3-9

- 1) Press the [EVENT MOB] key for at least three seconds.

The MOB mark ("M") is entered at the MOB position and the message shown in Figure 3-10 appears.

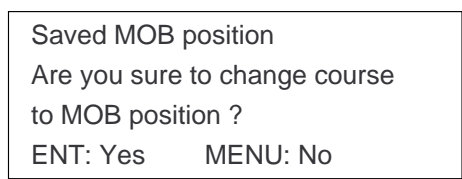


Figure 3-10

- 2) Press the [NU/CU ENT] key. If the display in use is Highway, Navigation or Data, they are automatically replaced by the Plotter 2 display.

Note: You may cancel MOB position as destination by pressing the [MENU ESC] key instead of the [NU/CU ENT] key at step 2. Note that the MOB mark remains on the display.

Erasing MOB mark

See "3.1 Entering/Erasing Marks". (MOB marks cannot be erased with the cursor.)

4. NAVIGATION PLANNING

4.1 Registering Waypoints

In navigation terminology a waypoint is a particular location on a voyage whether it be a starting, intermediate or destination waypoint.

The GP-80 can store 200 waypoints, numbered from 001–200. Waypoints can be registered four ways:

- by cursor
- by MOB position or event position
- at own ship's position, and
- through the waypoint list.

Registering waypoints by the cursor

- 1) Press the [WPT RTE] key. The Waypoint/Route menu appears.

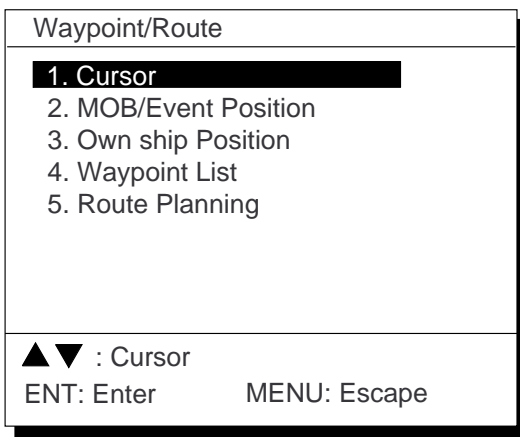


Figure 4-1 Waypoint/Route menu

- 2) Press [1] to select Cursor. The following display appears.

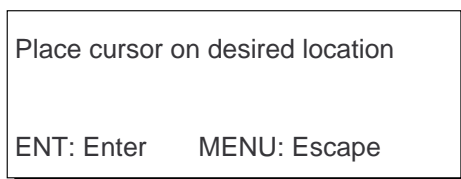


Figure 4-2

The display changes to Plotter 2 when the Highway, Navigation or Data mode is in use.

- 3) Press the cursor keys to place the cursor on the location desired for the waypoint.
- 4) Press the [NU/CU ENT] key.

A window similar to the one shown in Figure 4-3 appears. The waypoint's position and date and time registered appear on the first and second lines. Waypoints are automatically given the youngest empty waypoint number and this number appears on the third line. You may, however, assign a different number. If the waypoint shares the same position with a mark, the mark's position and date and time entered are registered as waypoint data.

If the waypoint memory is full, the waypoint number line in the window is blank. In this case waypoints cannot be entered unless a waypoint is written over or deleted.

To assign waypoint number, go to step 5. If you do not want to change the waypoint number, go to step 6 to select mark shape and enter comment.

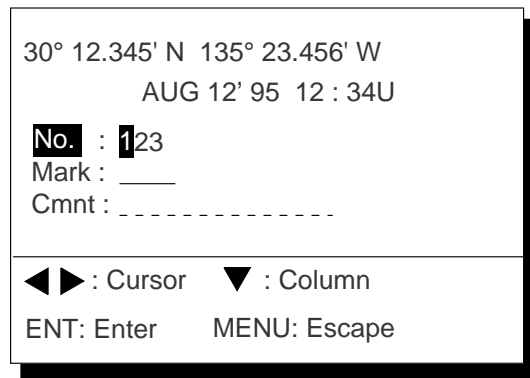


Figure 4-3

- 5) Enter waypoint number, in three digits (001–200).

- 6) Press ▼ to select waypoint mark shape. The following display appears.



Figure 4-4 Screen for selecting waypoint mark shape

- 7) Press ◀ or ▶ to select mark shape.
8) Press the [NU/CU ENT] key. The display shown in Figure 4-5 appears.

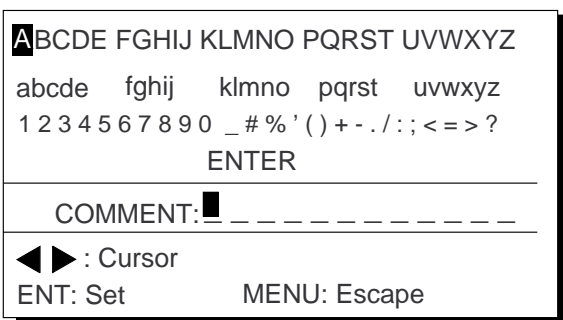


Figure 4-5 Screen for entry of comment for waypoint

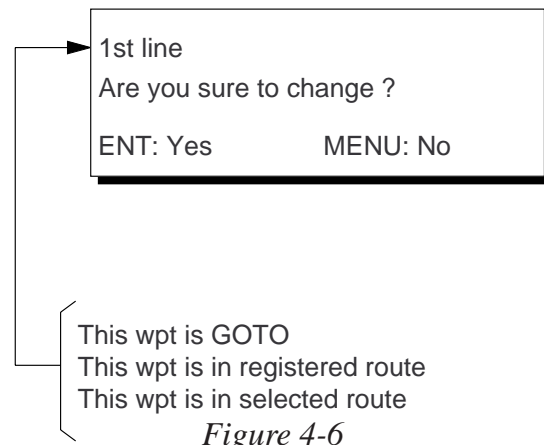
- 9) You may enter a comment, as shown in the procedure which follows, or skip to step 10 to finish. The comment may consist of up to 12 alphanumeric characters.

- ① Press the cursor keys to select alphanumeric character.
- ② Press the [NU/CU ENT] key. Selected character appears on the COMMENT line.
 - To create a space, select "_".
 - Numeric data can be input directly by pressing numeric keys.
 - To clear wrong data, press the [CLEAR] key.
- ③ Repeat steps 1 and 2 to complete the comment.
- ④ Select ENTER and press the [NU/CU ENT] key.

- 10) Press the [NU/CU ENT] key.

Control is returned to the last used display mode.

When the waypoint number entered at step 5 already exists, the message shown in Figure 4-4 appears if the waypoint is part of the current destination or route or is part of a route. If it is alright to write over the waypoint and its data, press the [Y] key. To change waypoint number, press the [N] key.



Note: If you fail to enter waypoint number, "Enter waypoint number" appears on the display for three seconds.

Registering waypoints by MOB position/event position

The MOB position or an event position can be registered as a waypoint. Event marks are numbered from 01 to 99; 01 is the latest event mark.

Note: You cannot register a MOB position or event position when there are no MOB positions or event positions saved. The buzzer sounds and the message shown in Figure 4-7 appears for three seconds to alert you.

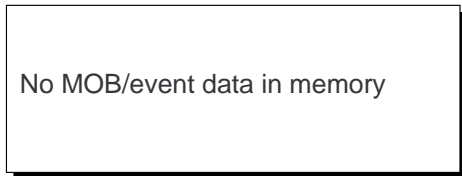


Figure 4-7

- 1) Press the [WPT/RTE] key.
- 2) Press [2] to select MOB/Event Position. The display shown in Figure 4-8 appears.

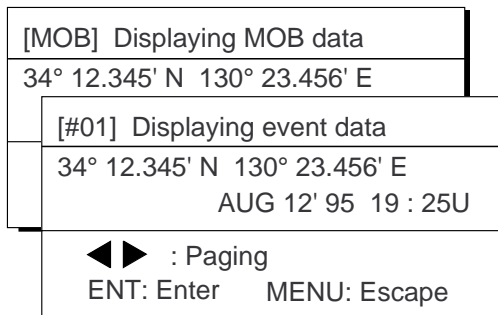


Figure 4-8

- 3) Press ◀ or ▶ to display the MOB position or event position to register as a waypoint.
- 4) Press the [NU/CU ENT] key.
- 5) Follow steps 5 through 11 in "Registering waypoints by the cursor" on page 4-1.

Registering waypoints by own ship's position

Note: When there is no position data, you cannot register a waypoint at own ship's position. The buzzer sounds and the following message appears.

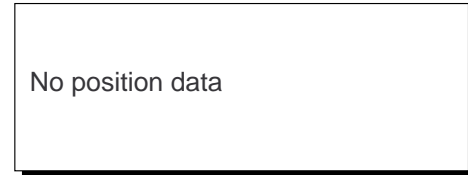


Figure 4-9

- 1) Press the [WPT/RTE] key.
- 2) Press [3] to select Own Ship Position.
- 3) Follow steps 5 through 11 in "Registering waypoints by the cursor" on page 4-1.

Registering waypoints through the waypoint list

- 1) Press the [WPT/RTE] key.
- 2) Press [4] to display the waypoint list.
- 3) Press [↺] to select position format; latitude and longitude or LOP.

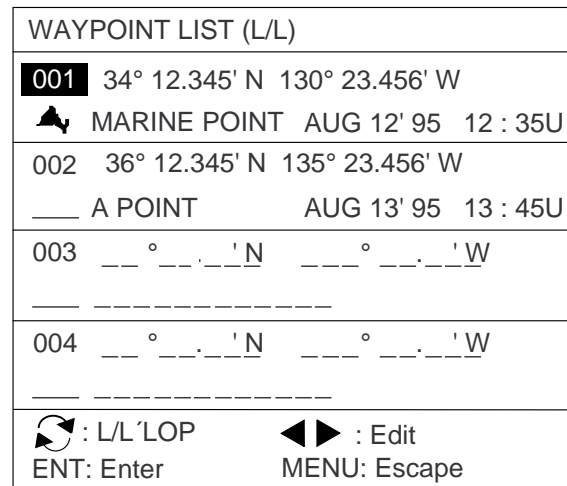


Figure 4-10

- 4) Press ▲ or ▼ to select waypoint number.
- 5) Press ◀ or ▶ to enter position. The display should now look something like Figure 4-11.

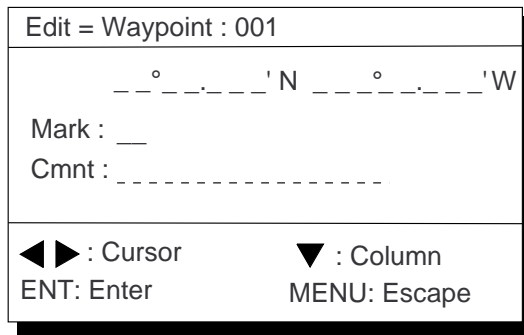


Figure 4-11

- 6) Enter latitude and longitude. To enter 34°12.345' N 135°23.456' E, for example, press;

([↺]) [3] [4] [1] [2] [3] [4] [5]

([↺]) [1] [3] [5] [2] [3] [4] [5] [6]

To change N to S or E to W, press ([↻]).

- 7) Press [↵].
- 8) Press [←] or [→] to select mark.
- 9) Press the [NU/CU ENT] key.
- 10) Enter comment.
- 11) Press the [NU/CU ENT] key twice.

The waypoint list reappears. Waypoint position and date and time the waypoint was entered appear on the list.

- 12) To enter another waypoint through the waypoint list, return to step 4.
- 13) Press the [MENU ESC] key to finish.

4.2 Editing Waypoints

- 1) Press [WPT RTE] and [4].
- 2) Press [▲] or [▼] to select waypoint to edit.
- 3) Press [▶].
- 4) Edit the contents of the waypoint.
- 5) Press the [NU/CU ENT] key. The message shown in Figure 4-12 appears if the waypoint is currently selected as destination, is part of a route, or is in the route currently selected as destination.

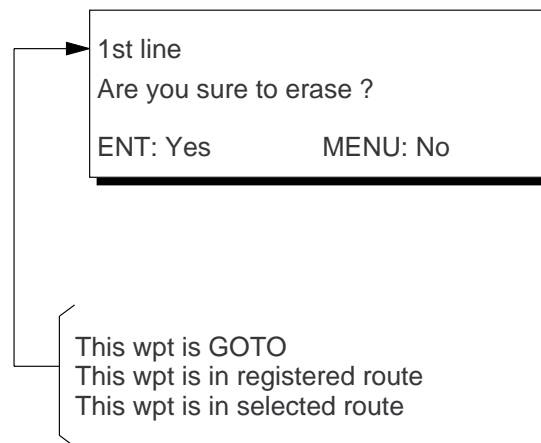


Figure 4-12

- 6) Press the [NU/CU ENT] key.
The waypoint and its data are deleted. Enter new data, referring to "4.1 Registering Waypoints".
- 7) Press the [MENU ESC] key.

4.3 Deleting Waypoints

Deleting waypoints by the cursor

- 1) Place the cursor on the waypoint to delete.
- 2) Press the [CLEAR] key.

Deleting waypoints through the waypoint list

- 1) Press [WPT RTE] and [4].
- 2) Press ▲ or ▼ to select waypoint to delete.
- 3) Press the [CLEAR] key. The message shown in Figure 4-13 appears if the waypoint is currently selected as destination, is part of a route, or is in the route currently selected as destination.

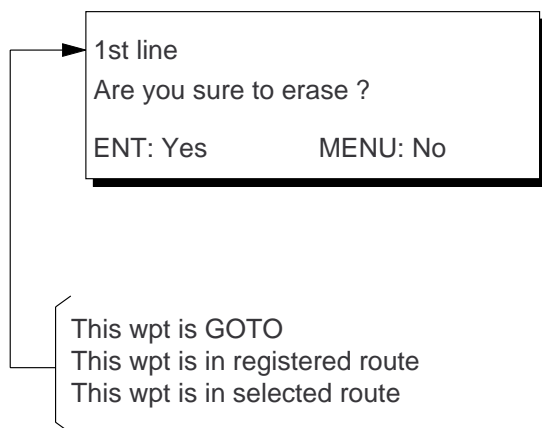


Figure 4-13

Note: All waypoint marks (as well as all other marks) and their data can be cleared collectively by clearing the Plotter memory. For further details, see page 9-1.

- 4) Press the [NU/CU ENT] key.

Note: To cancel erasure, press the [MENU ESC] key instead of the [NU/CU ENT] key. The waypoint list appears.

- 5) Press the [MENU ESC] key.

4.4 Registering Routes

Often a trip from one place to another involves several course changes, requiring a series of route points which you navigate to, one after another. The sequence of waypoints leading to the ultimate destination is called a route. The GP-80 can automatically advance to the next waypoint on a route, so you do not have to change the destination waypoint repeatedly.

The GP-80 can store 30 routes and each route may contain up to 30 waypoints. Routes can be registered while in the Plotter 1 or Plotter 2 display mode.

Registering routes

- 1) Press the [WPT/RTE] key.
- 2) Press [5] to select Route Planning. The route list appears.

ROUTE LIST				
No.	PTS	Total Dist.	TTG	Remarks
01	30	1234 . 56 nm	12D15H28M	UseFwd
02	25	234 . 56 nm	2D08H35M	
03	30	*999. 99 nm	*9D*9H*9M	
04	_ _	_ _ . _ _ nm	_ _ D _ H _ M	
05	30	6543 . 21 nm	34D23H45M	
06	_ _	_ _ . _ _ nm	_ _ D _ H _ M	

▲▼ : Route No. ◀▶ : Edit
 ENT: Enter MENU: Escape

Remarks

Use: In use

Fwd: Traverse waypoints in forward order

Rvs: Traverse waypoints in reverse order

Figure 4-14 Route list

- 3) Press ▲ or ▼ to select route number.
- 4) Press ▶.

The route planning/waypoint list window appear as shown in Figure 4-15. The waypoint list window lists the position and data for each registered waypoint. No position or data appears for empty waypoints.

ROUTE : 01 (In Use , REVERSE)	
skip	Distance TTG
Trial Speed : <input type="text" value="Auto"/> Man (012.0kt)	
01	ENnm ..D..M..H
02	ENnm ..D..M..H
001	34° 12.345' N 130° 23.456' E
	MARINE POINT AUG 12 95 12 : 35U
002	36° 12.345' N 135° 23.456' E
<input type="text" value="___"/>	A POINT AUG 13 95 13 : 45U
	: RTE WPT CLEAR: Delete
ENT: Enter	MENU: Escape

Route editing screen

Waypoint list

Use: In use
 Fwd: Traverse waypoints in forward order
 Rvs: Traverse waypoints in reverse order

Figure 4-15 Route editing screen

- 5) If required, press ▲ to enter the speed by which to calculate time-to-go.
- 6) Press ◀ or ▶ to select Auto or Man.

Auto: Current average speed is used to calculate the time-to-go. **Manual:** Entered speed is used to calculate the time-to-go. Enter speed and press ▼.

Route waypoints may be registered two ways: entering waypoint number directly or through the route editing screen. Follow ① or ② below.

① Entering waypoint number directly

- 7) Enter waypoint number, in three digits. The cursor shifts to the "Skip" window. The procedure for skipping a waypoint is shown on page 5-4. For now, go to the next step.
- 8) Press ▼ to continue. If the waypoint entered in step 7 does not exist, you are informed that the waypoint does not exist and entry is cancelled.
- 9) Enter other route waypoints by repeating steps 7 and 8.
- 10) Press [MENU ESC] to finish.

② Using previously registered waypoints

Enter waypoints in the order they will be traversed; not by waypoint number order.

- 7) Press []. The reverse video on the waypoint on route planing screen disappears.
 Press ▲ or ▼ to select waypoint number.
- 9) Press the [NU/CU ENT] key. Selected waypoint number appears on the route editing screen. The distance and time-to-go indications to the first waypoint entered are blank.
- 10) To enter other route waypoints, repeat steps 8 and 9.
- 11) Press the [MENU ESC] key to finish.

Note: To return to the route editing screen, press [].

4.5 Deleting Route Waypoints

- 1) Press [WPT RTE] and [5] to display the route list.
- 2) Press ▲ or ▼ to select route.
- 3) Press ▶ to display route editing screen.
- 4) Select the waypoint to delete.
- 5) Press the [CLEAR] key.
- 6) Press the [NU/CU ENT] key.
- 7) Repeat steps 4 through 6 to continue deleting waypoints.
- 8) Press the [MENU ESC] key. The route is rearranged to reflect the change.

4.6 Replacing Route Waypoints

- 1) Press [WPT RTE] and [5] to display the route list.
- 2) Press ▲ or ▼ to select route.
- 3) Press ► to display route editing screen.
- 4) On the route editing screen, place the cursor on waypoint number to replace.
- 5) Enter new waypoint number.
- 6) Press the [NU/CU ENT] key. The message shown in Figure 4-16 appears.

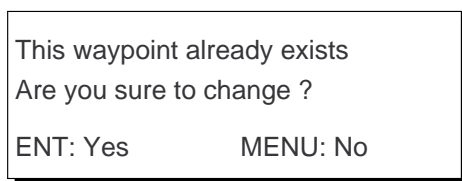


Figure 4-16

- 7) Press the [NU/CU ENT] key.
- 8) Press the [MENU ESC] key twice.

4.7 Deleting Routes

- 1) Press [WPT RTE] and [5] to display the route list.
- 2) Press ▲ or ▼ to select route to delete.
- 3) Press the [CLEAR] key. The display shown in Figure 4-17 appears if the route is in use.

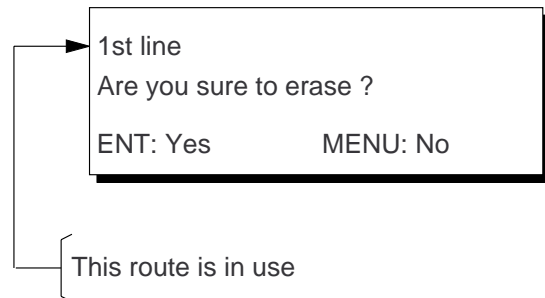


Figure 4-17

- 4) Press the [NU/CU ENT] key.
- 5) Press the [MENU ESC] key.

5. STARTING FOR DESTINATION

5.1 Setting Destination

There are four ways by which you can set destination:

- By cursor
- By MOB position or event position
- By waypoint, and
- By route.

Note 1: Destination cannot be set when there is no GPS position data. When there is no position data, the buzzer sounds and the message shown in Figure 5-1 appears.

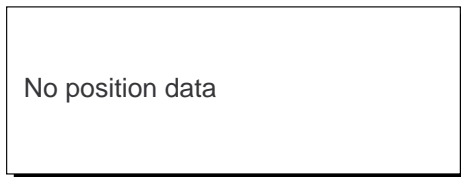


Figure 5-1

Note 2: Previous destination is cancelled whenever a destination is set.

Setting destination by cursor

Using the cursor you may set a destination consisting of 30 points. When all 30 points are entered, the GP-80 automatically disables further entry.

Setting single destination

- 1) Press the [GOTO] key. The menu shown in Figure 5-2 appears.

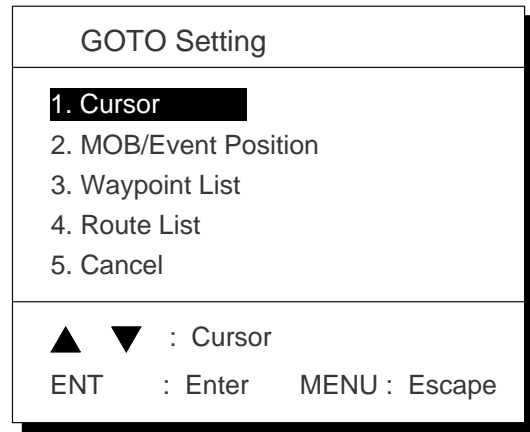


Figure 5-2 GOTO setting menu

- 2) Press [1] to select Cursor. The display shown in Figure 5-3 appears.

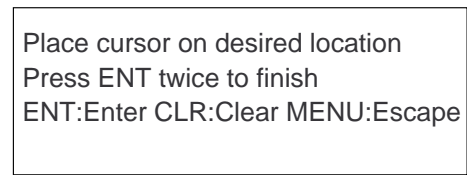


Figure 5-3

If the display in use is other than Plotter 1, the Plotter 2 display is automatically selected.

- 3) Place the cursor on the location desired for destination.
- 4) Press the [NU/CU ENT] key.

Note: To clear selection, press the [CLEAR] key.

- 5) Press the [NU/CU ENT] key to finish.

Control is returned to the display mode in use before you set destination. A dashed line connects own ship and the destination, which is marked with a flag, as shown in Figure 5-4.

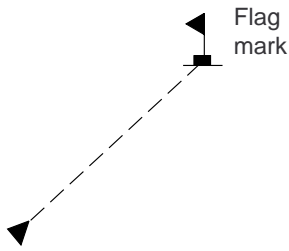


Figure 5-4 Single destination set by cursor

Setting multiple destinations

- 1) Press [GOTO] and [1].
- 2) Place the cursor on the location desired for waypoint.
- 3) Press the [NU/CU ENT] key.
- 4) Repeat steps 2 and 3 to enter other points. Waypoints are connected with a line.
- 5) Press the [NU/CU ENT] key to finish. The route number entry display appears as shown in Figure 5-5. If no route number appears or you want to change the route number shown, go to step 6 to enter route number. To register the route under the number shown, go to step 8.

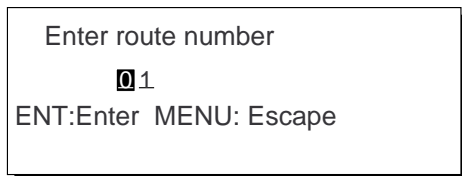


Figure 5-5

- 6) Key in route number.
- 7) Press the [NU/CU ENT] key. Waypoints are marked with flags and are connected with a dashed line.

If the route number entered already exists the message shown in Figure 5-6 appears.

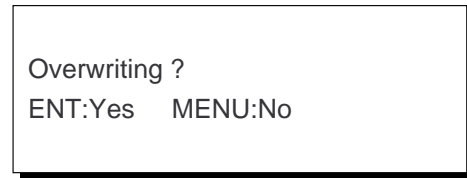


Figure 5-6

- 8) Press the [NU/CU ENT] key.

The waypoints do not have waypoint numbers, however you can attach waypoint numbers by doing the following.

- ① Press [WPT RTE] and [5] to display the route list.
- ② Press ▲ or ▼ to select route number entered.
- ③ Press ►.
- ④ Enter waypoint number, in three digits.
- ⑤ Press ▼. If the waypoint number already exists the message shown in Figure 5-7 appears.

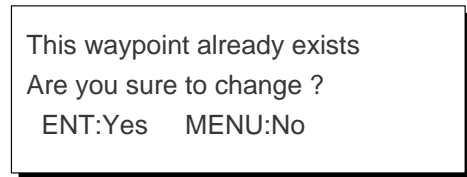


Figure 5-7

- ⑥ Press the [NU/CU ENT] key. The waypoint entered here replaces previously entered waypoint.

Note: To cancel replacement of waypoint, press the [MENU ESC] key at step ⑥.

- ⑦ Repeat steps ④ and ⑤ to enter other waypoint numbers.
- ⑧ Press the [MENU ESC] key twice to finish.

When destination is cancelled, dashed lines are erased but flags remain on the screen.

Setting destination by MOB position or event position

Note: This operation cannot be performed when there is no MOB position or event position. The buzzer sounds and the message shown in Figure 5-8 appears to alert you when there is no MOB position or event position.

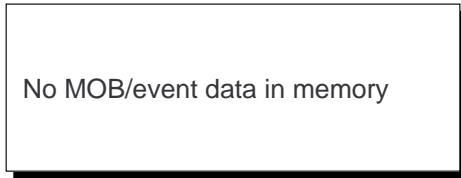


Figure 5-8

- 1) Press the [GOTO] key.
- 2) Press [2] to select MOB/Event Position. The display shown in Figure 5-9 appears.

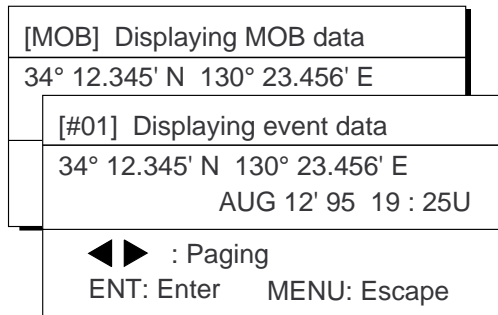


Figure 5-9

- 3) Press ◀ or ▶ to select MOB position or event position. The MOB position appears first. To select event position, press ▶. If selected position is within the current display range, the cursor marks the position. (The cursor does not appear on the Highway, Navigation and Data displays.)
- 4) Press the [NU/CU ENT] key. A flag appears at position selected if it is within the current display range. A dashed line connects between own ship and MOB position or event position.

When destination is cancelled, dashed lines are erased but flags remain on the screen.

Setting destination through waypoint list

Note: A waypoint must exist to set it as destination. When a waypoint does not exist, the buzzer sounds and the message shown in Figure 5-10 appears.

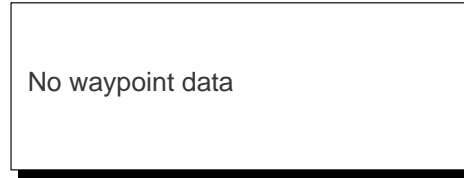
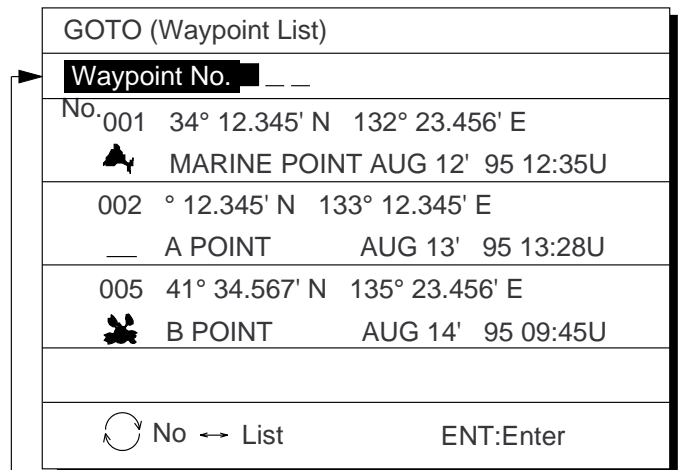


Figure 5-10

Destination waypoint can be set through the waypoint list two ways:

- By entering waypoint number, and
- By selecting waypoint by cursor

- 1) Press the [GOTO] key.
- 2) Press [3] to display the Waypoint List.



Waypoint number can be entered here when this line appears in reverse video.

Figure 5-11 Waypoint list

Set destination by following ① or ② on the next page.

① Setting destination by waypoint no.

3) Enter waypoint number, in three digits. You can clear entry by pressing the [CLEAR] key.

4) Press the [NU/CU ENT] key.

Own ship position becomes starting point and a dashed line runs between it and the waypoint selected.

② Setting destination by selecting wpt.

3) Press [↻]. Each press of the key alternately enables manual entry of waypoint number and selection of waypoint number by cursor (through the waypoint window).

4) Press ▲ or ▼ to select waypoint.

5) Press the [NU/CU ENT] key.

Own ship position becomes starting point and a dashed line runs between it and the waypoint selected.

Setting route as destination

Note: Route entered must exist to set it as destination. The buzzer sounds and the message shown in Figure 5-12 appears if you set enter a route which does not exist.

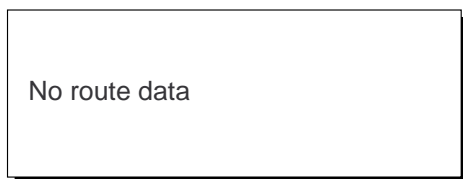


Figure 5-12

A route to set as destination may selected through the route list two ways:

- By entering route number, and
- By selecting route.

1) Press the [GOTO] key.

2) Press [4] to display the Route List. Then, follow ① or ② in the adjacent column.

Route number can be entered here when this line appears in reverse video.

GOTO (Route List) ◀FORWARD▶			
Route No. ■ _			
No.	PTS	TOTAL	TTG
01	30	1234.56nm	12D15H28M
02	25	234.56nm	2D08H35M
05	8	57.89nm	0D10H28M
06	30	*999.99nm	*9D*9H*9M
10	30	6543.21nm	34D23H45M

↻ : No. ↔ List
ENT:Enter MENU:Escape

Figure 5-13 Route list

① By entering route number

3) Press ◀ or ▶ to select direction which to traverse the route waypoints; forward or reverse.

4) Enter route number.

5) Press the [NU/CU ENT] key.

Current position becomes starting point. A solid line connects between the starting point and first route waypoint and a dashed line connects all other route waypoints.

② By selecting a route

3) Press [↻]. Each press of the key alternately enables manual entry of route number and selection of route number (through the route window)

4) Press ▲ or ▼ to select route.

5) Press ◀ or ▶ to select direction in which to traverse the route waypoints; forward or reverse.

6) Press the [NU/CU ENT] key.

Current position becomes starting point. A solid line connects between the starting point and first route waypoint and a dashed line connects all other route waypoints.

Skipping route waypoints

You may skip route waypoints by displaying "DI" (DIisable) next to the route waypoint in the route list. Using Figure 5-14 as an example, your ship is currently heading toward waypoint 04 but is to switch course and head to waypoint 03. In this case you would want to skip waypoint 04.

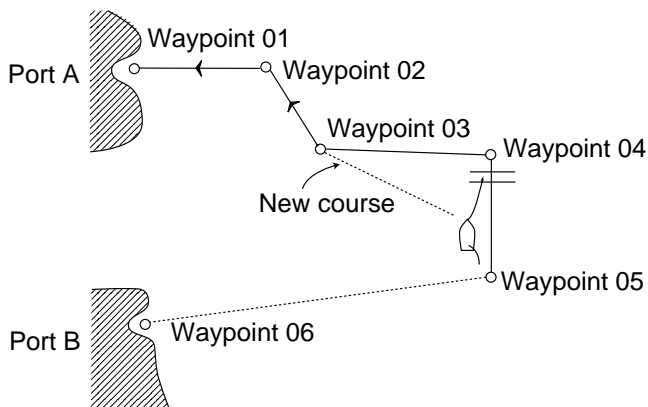


Figure 5-14

- 1) Press [WPT RTE] and [5] to display the route list. Press the cursor keys to select route.

"EN" indicates waypoint is enabled. Display "DI" to skip waypoint.

ROUTE	:01	(In Use, REVERSE)
	skip Distance	TTG
Trial Speed	[Auto]	Man (012.0kt)
01	04 EN	-----nm --D--M--H
02	03 EN	345.67nm --2D 12H 34M
004	34° 12.345' N	130° 23.456' E
	MARINE POINT	APR 10' 95 12:35U
003	36° 12.345' N	135° 23.456' E
	A POINT	APR 10' 95 13:45U
	↻ : RTE ↔ WPT	CLEAR: Delete
	ENT:Enter	MENU:Escape

Figure 5-15 Route list

- 2) Press ▲ or ▼ to select route waypoint to skip.
- 3) Press ◀ or ▶ to shift the cursor to the right of the waypoint number.
- 4) Press [↻] to change "EN"(ENable) to "DI"(DIisable).
- 5) Press the [NU/CU ENT] key.

To reselect the waypoint, select it on the route list and press [↻] to change "DI" to "EN".

5.2 Cancelling Destination

- 1) Press the [GOTO] key.
- 2) Press [5] to select Cancel. The message shown in Figure 5-16 appears.

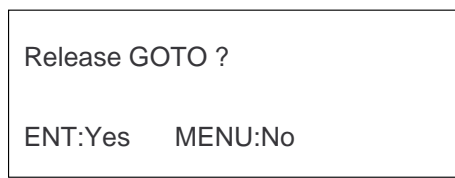


Figure 5-16

- 3) Press the [NU/CU ENT] key.

5.3 Erasing Route Waypoints (flags)

- 1) Place the cursor on the flag to erase.
- 2) Press the [CLEAR] key. The message shown in Figure 5-17 appears if the waypoint is currently selected as destination, is part of a registered route, or is part of the route currently being navigated.

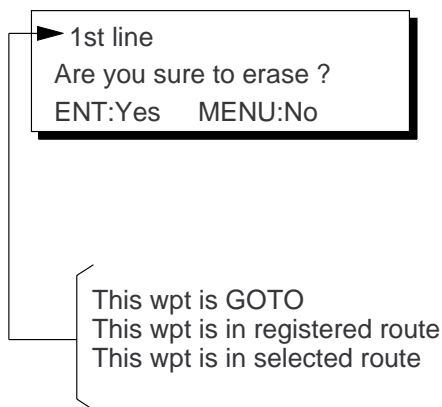


Figure 5-17

- 3) Press the [NU/CU ENT] key.

Note: Flags can be erased collectively by clearing the Plotter memory or both the Plotter memory and GPS memory. See page 9-1 for further details.

When flags are erased

When the origin waypoint is erased the waypoint before it becomes the origin waypoint. If there is no waypoint before the origin waypoint, current position becomes the origin waypoint.

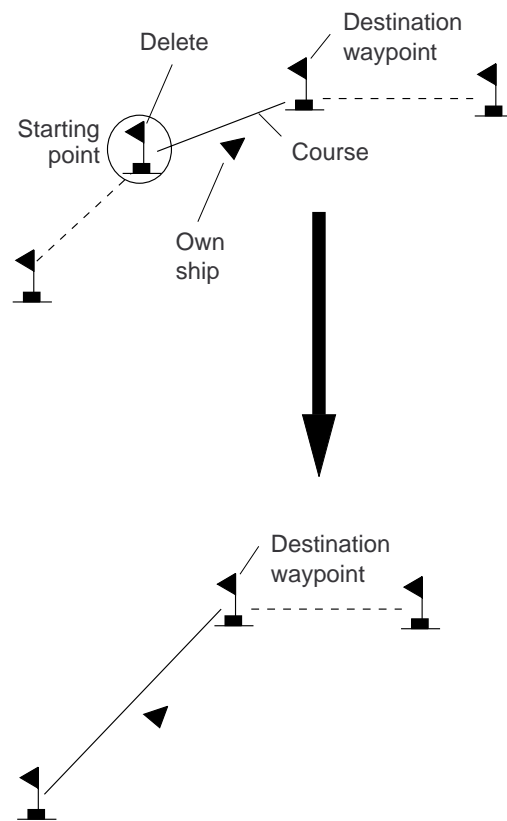


Figure 5-18 Route rearranged after erasing flag

When a destination is erased, the waypoint which follows it becomes the destination. If there is no waypoint after the destination waypoint erased, route navigation is cancelled.

5.4 Finding Range and Bearing Between Two Points

Selecting Course Sailing Method

The range and bearing to a destination are calculated by two ways: Great Circle or Rhumb Line. However, cross track error is calculated by rhumb line only.

Great Circle: The great circle course line is the shortest course between two points on the surface of the earth. (Imagine stretching a piece of yarn between two points on the earth.) However, this course requires frequent change of heading to follow course faithfully.

Rhumb Line: The rhumb line course line is the straight line drawn between two points on a nautical chart. This course does not require frequent changes of heading however it is not the shortest since it follows the earth's curvature.

- 1) Press [MENU ESC] [9] and [1] to display the PLOTTER SETUP menu.

PLOTTER SETUP		
Memory Apportion	Trk = 1000 / 2000Pt	
Bearing Ref.	<input type="text" value="True"/>	Mag
Mag Variation	<input type="text" value="Auto"/>	Man
	(07° W)	(00° E)
Calculation	<input checked="" type="text" value="R.L"/>	G.C
User defined #1	◀ SPD ▶	
#2	◀ CRS ▶	
#3	◀ RNG ▶	
#4	◀ BRG ▶	
ENT:Enter MENU:Escape		

Figure 5-19 PLOTTER SETUP menu

- 2) Press ▲ or ▼ to selection Calculation.
- 3) Press ◀ or ▶ to select R.L (Rhumb Line) or G.C (Great Circle).
- 4) Press the [NU/CU ENT] key.
- 5) Press the [MENU ESC] key.

Calculation Procedure

You can easily find the range and bearing between two points by entering their coordinates. By entering speed you can also know the time-to-go to the end point.

- 1) Press [MENU ESC] and [5]. The MANUAL CALCULATION menu appears.

MANUAL CALCULATION		
From	<input type="text" value="1° . . . ' N"/>	<input type="text" value=" . . . ° ' E"/>
To	<input type="text" value=" . . . ° ' N"/>	<input type="text" value=" . . . ° ' E"/>
Trial speed :	<input type="text" value="Auto"/>	Man
		(. . . kt)
Rng :	<input type="text" value=" . . . m"/>	Brg : <input type="text" value=" . . . °"/>
TTG :	<input type="text" value=" _ D _ H _ M"/>	
▲ ▼ ◀ ▶ : Cursor MENU : Escape		
ENT : Calculation ↻ : N/S, E/W		

Figure 5-20 MANUAL CALCULATION menu

- 2) If necessary, press [↻] to switch from north latitude to south latitude or vice versa.
- 3) Key in latitude of starting point.
- 4) If necessary, press [↻] to switch from west longitude to east longitude or vice versa.
- 5) Key in longitude of starting point.
- 6) Press ▼.
- 7) Enter latitude and longitude of end point.
- 8) Press ▼ to shift the cursor to the Trial Speed line.
- 9) Press ◀ or ▶ to select Auto or Man. Auto uses ship's average speed to calculate time-to-go.
- 10) If you selected Man, enter speed.

(Continued on next page)

11) Press the [NU/CU ENT] key.

The range, bearing and time-to-go between two points appear on the display. If data entered is wrong or insufficient the buzzer sounds and the message "INCOMPLETE DATA" appears. If the data contains error, "*" and all nines appear as the calculation results.

6. SETTING UP VARIOUS DISPLAYS

6.1 Selecting Data to Display on the Data Display

The user may select what data to display in four locations on the data display.

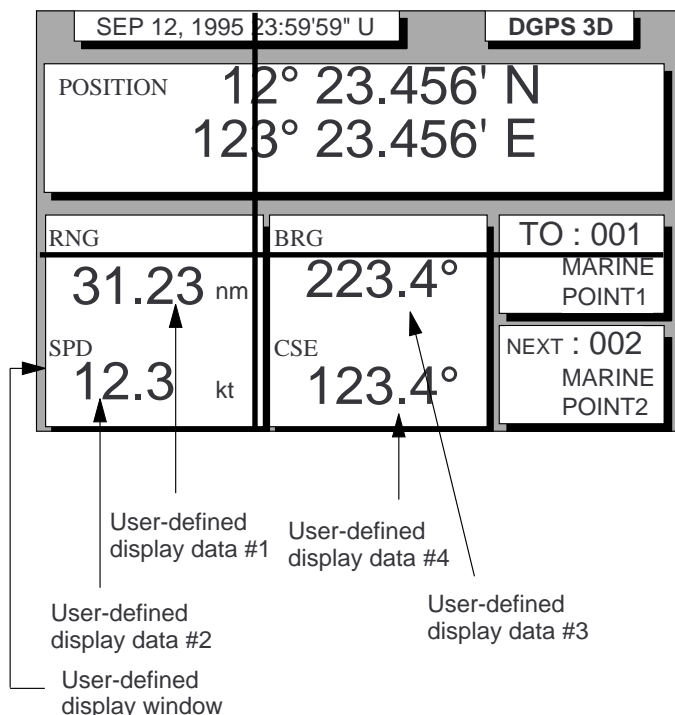


Figure 6-1 Data display

The data the user may select to display are;

- Altitude (ALT)*
- Average course (AVR CSE)
- Average speed (AVR SPD)
- Course (CSE)
- Course error (dCSE)
- Cross track error (XTE)
- Depth (W.DPT)#
- ETA to waypoint (ETA)
- Range to waypoint (RNG)
- Route time-to-go (RT.TTG)
- Speed (SPD)
- Time-to-go to waypoint (TTG)

- Total route distance (RT.DIST)*
- Trip distance (TRIP)
- Trip elapsed time (TRIP TM)
- Water temperature (W.TMP)#, and
- Velocity to destination (VTD)*

*ALT: Displayed only in 3D position fixing.

*RT. DIST: Total distance from current position to ultimate destination. Appears when following a registered route or a cursor-created route.

*VTD: When following a route, plus or minus appears next to indication to denote which direction the route is being traversed.

Requires external sensor

- 1) Press [MENU ESC] [9] and [1] to display the PLOTTER SETUP menu.

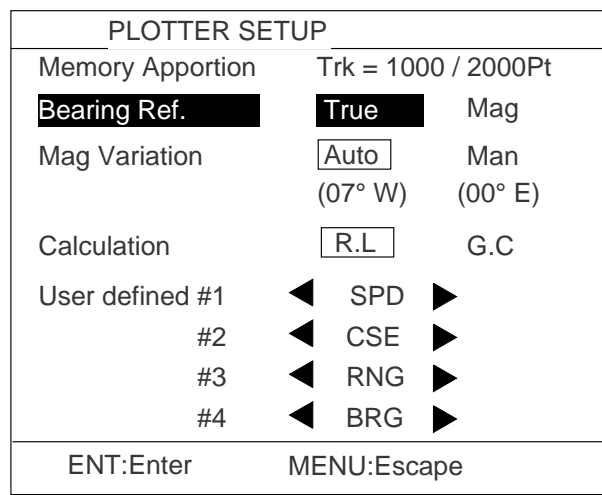


Figure 6-2 PLOTTER SETUP menu

- 2) Press ▲ or ▼ to select one of four of "User defined" (#1, #2, #3, #4).
- 3) Press ◀ or ▶ to select data to display.
- 4) Press the [NU/CU ENT] key. To select the data to display at other user defined displays, repeat steps 2 and 3.
- 5) Press the [MENU ESC] key.

6.2 Selecting Position Format

Position can be displayed in latitude and longitude, Loran C LOPs, or Decca LOPs, and the default format is latitude and longitude.

Selecting position format (L/L or LOPs)

- 1) Press [MENU ESC] [9] and [8] to display the LOP SETUP menu.

LOP SETUP		
Pos Display	Lat / Long	LOP
LOP Display	LC	DE
LC Chain	7980 : 23-43	
LOP	-12.3us +0.34 us	
DE Chain	24:G - P	
LOP	+0.80 Lane -1.00 Lane	
(RED:1 GREEN:2 PURPLE:3)		
▲▼◀▶ : Select ENT : Enter		
MENU : Escape ↻ : +/-		

Figure 6-3 LOP SETUP menu

- 2) Press ▲ or ▼ to select Pos Display.
- 3) Press ◀ or ▶ to select Lat/Long or LOP.
- 4) Press the [NU/CU ENT] key.

Displaying LOPs

- 1) Press [MENU ESC] [9] and [8].
- 2) Press ▲ or ▼ to select Pos Display.
- 3) Press ◀ or ▶ to select LOP.
- 4) Press ▼ to select LOP Display.
- 5) Press ◀ or ▶ to select LC (Loran C) or DE (Decca).

Follow ① or ② in the adjacent column according to selection in step 5.

① For Loran LOPs

- 6) Press ▼ to select LC Chain.
- 7) Key in GRI code referring to the Loran C chain list appears in the Appendix. If the GRI code is 9970, for example, press [9] [9] [7] [0].
- 8) Key in secondary code pair referring to the Loran C chain list in the Appendix.
- 9) Press ▼.
- 10) Key in correction value.
- 11) If necessary, press [↻] to switch from plus to minus or vice versa.
- 12) Press the [NU/CU ENT] key.
- 13) Press the [MENU ESC] key.

② For Decca LOPs

- 6) Press ▼ to select DE Chain.
- 7) Key in Decca chain number referring to the Decca chain list in the Appendix. For the Europe chain, for example, press [0] [1].
- 8) Key in Decca lane pair. Red, [1]; Green [2], and Purple [3].
- 9) Press ▼.
- 10) Key in lane correction value.
- 11) If necessary, press [↻] to switch from plus to minus or vice versa.
- 12) Press the [NU/CU ENT] key.
- 13) Press the [MENU ESC] key.

Registering waypoints using LOPs

- 1) Press [WPT RTE] and [4].
- 2) Press [↻] to display LOPs.

WAYPOINT LIST (LOP, LC)			
001	36365.2	59102.3	
▲	MARINE POINT	AUG12'	95 12 : 35U
002	36512.3	59134.5	
—	A POINT	AUG13'	95 13 : 45U
003	-----,--	-----,--	
004	-----,--	-----,--	
↻ : L/L ↔ LOP ◀ ▶ : Edit ENT : Enter MENU : Escape			

Figure 6-4 LOP display on the waypoint list

- 3) Press ▲ or ▼ to select waypoint number.
- 4) Press ◀ or ▶. Your display should look like one of the displays in Figure 6-5.

Edit=Waypoint : 001			
LC8930 :	30	50	
	3	8931.2	58654.3
		(34° 12.345' N	130° 23.456' E)
Mark :	▲		
Cmnt :	MARINE POINT		
◀ ▶ : Cursor ▼ : Column ENT : Enter MENU : Escape			

Loran C LOP input screen

Edit=Waypoint : 001			
DE :	32 (9C)	RED	GREEN
	1	A:12.23	2H:24.35
		(34° 12.345' N	130° 23.456' E)
Mark :	▲		
Cmnt :	MARINE POINT		
ABCDEFGHIJ fi 1, 2 ~ 9, 0 ◀ ▶ : Cursor ▼ : Column ENT : Enter MENU : Escape			

Decca LOP input screen

Figure 6-5 LOP input screens

- 5) Key in LOP1 and LOP2, to enable calculation.
- 6) Press ▼ to calculate LOPs. "Calculating" appears between parentheses during the calculation. Actual LOPs replace "Calculating" upon completion of the calculation.

If the conversion fails, the message "Failed in Conversion" appears for three seconds. Press the [CLEAR] key and reenter the right LOP1 and LOP2.
- 7) Press ◀ or ▶ to select mark.
- 8) Press the [NU/CU ENT] key.
- 9) Enter comment, if desired.
- 10) Press the [NU/CU ENT] key twice. Waypoint data and date and time registered appear.

6.3 Demo Display


The demo display provides simulated operation of this unit. Own ship tracks, at the speed selected, a figure eight course, starting from position entered. All controls are operative; you may change course, enter marks, etc.

- 1) While pressing and holding down [NU/CU ENT], turn on the power. After the test results appear, the Simulation Mode menu appears.

DEMO SETTING	
BASE POSITION	
° ' N ° ' W	
SPEED	
00.00kt	
◀▶ : Cursor	▼ : Column
ENT: Enter	↻ : N/S, E/W

Figure 6-6 Simulation mode menu

- 2) Key in latitude of initial position.
- 3) If necessary, press [↻] to switch from north latitude to south latitude or vice versa.
- 4) Key in longitude.
- 5) If necessary, press [↻] to switch from east longitude to west longitude or vice versa.
- 6) Press ▼ key.
- 7) Key in speed.
- 8) Press the [NU/CU ENT] key to start the simulation mode.

The icon  appears in the plotter 1, 2, and highway display. All controls are operative.

Note: The return to the normal mode, turn off the power and then turn it on while pressing and holding down [NU/CU ENT] key.

Note: When the memory is cleared while in the demonstration mode, the equipment starts up in the normal mode.

7. ALARMS

There are seven alarm conditions which generate both audible and visual alarms.

When an alarm setting is violated, the buzzer sounds and the name of the offending alarm appears on the display. The alarm icon also appears on the Plotter 1, Plotter 2 and Highway displays.

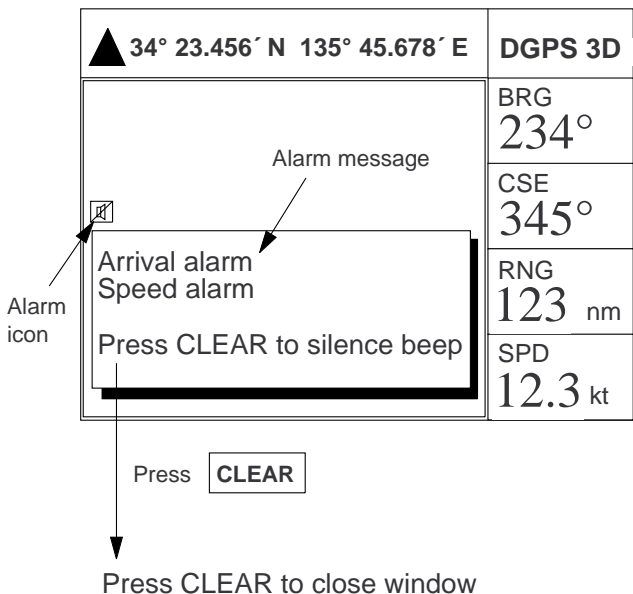


Figure 7-1 Location of alarm messages and alarm icon

7.1 Arrival Alarm, Anchor Watch Alarm

Arrival alarm

The arrival alarm informs you that own ship is approaching a destination waypoint. The area that defines an arrival zone is that of a circle which you approach from the outside of the circle. The alarm will be released if own ship enters the circle.

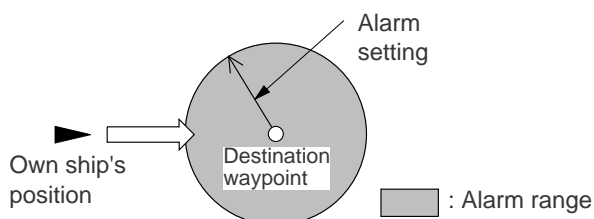


Figure 7-2 How the arrival alarm works

- 1) Press the [MENU ESC] key.
- 2) Press [4] to display the ALARM SETTINGS menu.

ALARM SETTINGS		1/2	
Arrival/Anchor	[Arr.]	Anc.	Off
Alarm Range	0.100nm		
XTE	[On]	Off	
Alarm Range	0.050nm		
Ship Speed	In	Over	Off
Speed Range	000.0 ~ 025.0kt		
Next Page			
▲▼◀▶ : Select			
ENT : Enter		MENU : Escape	

Figure 7-3 ALARM SETTINGS menu, page 1/2

- 3) Press ▲ or ▼ to select Arrival/Anchor.
- 4) Press ◀ or ▶ to select Arr.
- 5) Press ▼ to select Alarm Range.
- 6) Key in alarm range (0.001–9.999 nm).
- 7) Press the [NU/CU ENT] key.
- 8) Press the [MENU ESC] key.

When own ship nears a waypoint by the range set here, the buzzer sounds and the message "Arrival alarm" appears. You can silence the audible alarm by pressing the [CLEAR] key. To erase the visual alarm, press the [CLEAR] key again.

To disable the alarm, select Off at step 4.

Anchor watch alarm

The anchor watch alarm sounds to warn you that own ship is moving when it should be at rest.

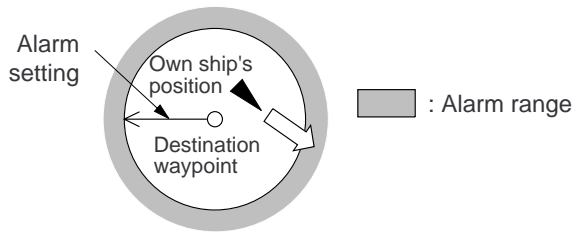


Figure 7-4 How the anchor watch alarm works

Before setting the anchor watch alarm, set present position as destination waypoint, referring to chapter 5.

- 1) Press [MENU ESC] and [4].
- 2) Press ▲ or ▼ to select Arrival/Anchor.
- 3) Press ◀ or ▶ to select Anc.
- 4) Press ▼ to select Alarm Range.
- 5) Key in alarm range (0.001–9.999 nm).
- 6) Press the [NU/CU ENT] key.
- 7) Press the [MENU ESC] key.

When own ship drifts by the range set here, the buzzer sounds and the message "Anchor alarm" appears. You can silence the audible alarm by pressing the [CLEAR] key. To erase the visual alarm, press the [CLEAR] key again.

To disable the alarm, select Off at step 3.

7.2 Cross Track Error (XTE) Alarm

The XTE alarm warns you when own ship is off its intended course.

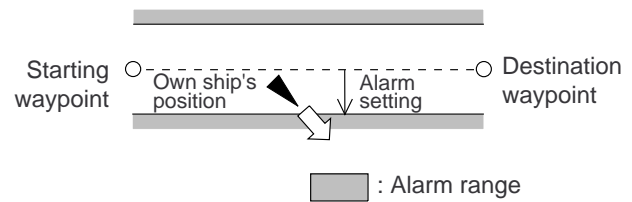


Figure 7-5 How the XTE alarm works

- 1) Press [MENU ESC] and [4].
- 2) Press ▲ or ▼ to select XTE.
- 3) Press ◀ or ▶ to select On.
- 4) Press ▼ to select Alarm Range.
- 5) Key in alarm range (0.001–9.999 nm).
- 6) Press the [NU/CU ENT] key.
- 7) Press the [MENU ESC] key.

When own ship strays from the intended track by the range set here, the buzzer sounds and the message "Cross track error alarm" appears. You can silence the audible alarm by pressing the [CLEAR] key. To erase the visual alarm, press the [CLEAR] key again.

To disable the alarm, select Off at step 3.

7.3 Ship's Speed Alarm

The ship's speed alarm sounds when ship's speed is lower or higher (or within) the alarm range set.

- 1) Press [MENU ESC] and [4].
- 2) Press ▲ or ▼ to select Ship Speed.
- 3) Press ◀ or ▶ to select In (or Over).

In: Alarm sounds when speed is within range set.

Over: Alarm sounds when speed is higher or lower than range set.

- 4) Press ▼ to select Speed Range.
- 5) Key in low speed.
- 6) Key in high speed.
- 7) Press the [NU/CU ENT] key.
- 8) Press the [MENU ESC] key.

When speed is higher or lower (or within) than the speed set here, the buzzer sounds and the message "Speed alarm" appears. You can silence the audible alarm by pressing the [CLEAR] key. To erase the visual alarm, press the [CLEAR] key again.

To disable the alarm, select Off at step 3.

7.4 Trip Alarm

The trip alarm sounds when the distance run is greater than the trip alarm setting.

- 1) Press [MENU ESC] and [4].
- 2) Press ▲ or ▼ to select Next Page. The menu shown in Figure 7-6 appears.

ALARM SETTINGS		2/2	
To Previous Page			
Trip (CLR:Reset)	On	Off	
Trip Range	0123.00nm		
Water Temp.	In	Over	Off
Temp. Range	+12.0 ~ +15.0°C		
Depth	In	Over	Off
Depth Range	0003.0 ~ 0200.0ft		
▲▼◀▶ : Select		ENT : Enter	
MENU : Escape		⌛ : +/-	

Figure 7-6 Alarm settings menu, page 2/2

- 3) Press ▲ or ▼ to select Trip.
- 4) If necessary, press [CLEAR] to reset the trip distance and trip elapsed time (see page 6-1).
- 5) Press ◀ or ▶ to select On.
- 6) Press ▼ to select Trip Range.
- 7) Key in trip range.
- 8) Press the [NU/CU ENT] key.
- 9) Press the [MENU ESC] key.

When the ship's distance run is higher than the trip range set here, the buzzer sounds and the message "Trip alarm" appears. You can silence the audible alarm by pressing the [CLEAR] key. To erase the visual alarm, press the [CLEAR] key again.

To disable the alarm, select Off at step 4.

7.5 Water Temperature Alarm

The water temperature alarm sounds when the water temperature is higher or lower (or within) the preset temperature. This alarm requires temperature signal from external equipment.

- 1) Press [MENU ESC] and [4].
- 2) Press ▲ or ▼ to select Water Temp.
- 3) Press ◀ or ▶ to select In (or Over).
- 4) Press ▼ to select Temp. Range.
- 5) Key in low temperature.
- 6) Key in high temperature.
- 7) Press the [NU/CU ENT] key.
- 8) Press the [MENU ESC] key.

When the water temperature is higher or lower (or within) the preset value, the buzzer sounds and the message "Water temp alarm" appears. You can silence the audible alarm by pressing the [CLEAR] key. To erase the visual alarm, press the [CLEAR] key again.

To disable the alarm, select Off at step 4.

7.6 Depth Alarm

The depth temperature alarm sounds when the depth is higher or lower (or within) the preset depth. This alarm requires video sounder connection.

- 1) Press [MENU ESC] and [4].
- 2) Press ▲ or ▼ to select Depth.
- 3) Press ◀ or ▶ to select In (or Over).
- 4) Press ▼ to select Depth Range.
- 5) Key in low depth.
- 6) Key in high depth.
- 7) Press the [NU/CU ENT] key.
- 8) Press the [MENU ESC] key.

When the depth is higher or lower (or within) the preset value, the buzzer sounds and the message "Depth alarm" appears. You can silence the audible alarm by pressing the [CLEAR] key. To erase the visual alarm, press the [CLEAR] key again.

To disable the alarm, select Off at step 4.

8. MENU SETTINGS

8.1 GPS Menu

Menu description

Fix mode

Two position fixing modes are available: 2D and 2/3D. The 2D mode provides two dimensional position fixes (latitude and longitude only) and is used when three satellites are in line of sight of the GPS receiver.

The 2/3D mode switches between two and three dimension position fixing automatically depending on how many satellites (three or four) are in light of sight of the GPS receiver.

Disable satellite

Every GPS satellite is broadcasting abnormal satellite number(s) in the Almanac. Using this information, the GPS receiver automatically eliminates any malfunctioning satellite from the GPS satellite schedule. However, the Almanac sometimes may not contain this information. You can disable an inoperative satellite manually on the GPS SETUP menu.

GPS smoothing, position

When the DOP or receiving condition is unfavorable, the GPS fix may change greatly, even if the vessel is dead in water. This change can be reduced by smoothing the raw GPS fixes. A setting between 0 and 9 is available. The higher the setting the more smoothed the raw data, however too high a setting slows response time to change in latitude and longitude. This is especially noticeable at high ship's speeds. "0" is the normal setting; increase the setting if the GPS fix changes greatly.

GPS smoothing, speed

During position fixing, ship's velocity (speed and course) is directly measured by receiving GPS satellite signals. The raw velocity data

may change randomly depending on receiving conditions and other factors. You can reduce this random variation by increasing the smoothing. Like with latitude and longitude smoothing, the higher the speed and course smoothing the more smoothed the raw data. If the setting is too high, however, the response to speed and course change slows. For no smoothing, enter "0." "5" is suitable for most conditions.

Speed average

Calculation of ETA and TTG, etc. is based on average ship's speed over a given period. The default setting is one minute.

Geodetic datum

Select the geodetic chart system you are using. WGS-84 (standard GPS chart system) and NAD 27 can be directly selected. For other charts, select "OTHER" and enter chart number referring to the geodetic chart list in the Appendix.

Position offset

You may apply an offset to position generated by the internal GPS receiver, to compensate for difference between GPS position and chart position.

Time difference

The GPS system uses UTC time. If you would rather use local time, enter the difference in hours between local time and UTC. Use the [+] and [-] keys for times later or earlier than UTC, respectively.

Position

Enter ship's position when cold starting (no satellite information in memory) the GPS receiver, to fix position faster. Accuracy should be within 10°.

Selecting fix mode

- 1) Press [MENU ESC] [9] and [6] to display the GPS SETUP menu.

GPS SETUP		1/2
Fix mode	2D	2/3D
Disable satellite	12	___ (1-32)
GPS Smoothing	Posn	000 (000-999 sec)
	Spd	005 (000-999 sec)
Speed Average	01 minute	
To Next Page		
▲▼◀▶ : Select ENT : Enter		
MENU : Escape		

Figure 8-1 GPS SETUP menu, page 1/2

- 2) Press ▲ or ▼ to select Fix mode.
- 3) Press ◀ or ▶ to select fix mode desired.
- 4) Press ▼ to change other settings, or press [MENU ESC] to register settings and escape.

Disabling satellites

- 1) Press [MENU ESC] [9] and [6].
- 2) Press ▲ or ▼ to select Disable satellite.
- 3) Key in satellite number, in two digits (01–32). Three sets of satellite numbers may be entered.
- 4) Press the [NU/CU ENT] key. If an invalid number is entered the buzzer sounds.
- 5) Press the [MENU ESC] key.

Note: To enable all disabled satellites, press the [CLEAR] key at step 3. All satellite numbers on the Disable satellite line are erased.

Entering GPS position smoothing

- 1) Press [MENU ESC] [9] and [6].
- 2) Press ▲ or ▼ to select Posn.
- 3) Enter smoothing factor in three digits (001–999).
- 4) Press the [NU/CU ENT] key.
- 5) Press the [MENU ESC] key.

Entering GPS speed smoothing

- 1) Press [MENU ESC] [9] and [6].
- 2) Press ▲ or ▼ to select Spd.
- 3) Enter smoothing factor in three digits (001–999).
- 4) Press the [NU/CU ENT] key.
- 5) Press the [MENU ESC] key.

Entering speed averaging

- 1) Press [MENU ESC] [9] and [6].
- 2) Press ▲ or ▼ to select Speed Average.
- 3) Enter smoothing factor in two digits (00–99).
- 4) Press the [NU/CU ENT] key.
- 5) Press the [MENU ESC] key.

Entering geodetic datum

- 1) Press [MENU ESC] [9] and [6].
- 2) Press ▲ or ▼ to select Geodetic Datum on page 2/2.

GPS SETUP		2/2
To Previous Page		
Geodetic Datum	WGS84	NAD27 OTHER (005)
Posn Offset	0.000' N	0.000' E
Time Diff.	+09 00	
Posn	12° 36.789' N	112° 47.890' E
▲▼◀▶ : Select ENT : Enter		
MENU : Escape ↻ : +/-		

Figure 8-2 GPS SETUP menu, page 2/2

- 3) Press ◀ or ▶ to select geodetic datum to use. For geodetic datum other than WGS-72 or NAD-27, select OTHER and key in chart number (001–171) referring to the geodetic chart list in the Appendix.
- 4) Press the [NU/CU ENT] key.
- 5) Press the [MENU ESC] key.

Entering position offset

If you do not know the type of chart you are using, GPS position may be wrong. Note the difference in position when moored to a pier and enter it on the GPS SETUP menu, to get correct position.

- 1) Press [MENU ESC] [9] and [6].
- 2) Press ▲ or ▼ to select Posn Offset on page 2/2.
- 3) If necessary press [↻] to switch from north latitude to south latitude or vice versa.
- 4) Key in latitude correction.
- 5) If necessary press [↻] to switch from east longitude to west longitude or vice versa.
- 6) Key in longitude correction.
- 7) Press the [NU/CU ENT] key.
- 8) Press the [MENU ESC] key.

Entering time difference

- 1) Press [MENU ESC] [9] and [6].
- 2) Press ▲ or ▼ to select Time Diff on page 2/2.
- 3) Key in time difference (–13:00 to +13:00).
- 4) Press [↻] to change from plus to minus or vice versa.
- 5) Press the [MENU ESC] key.

Entering position

After the unit is installed you may enter position to shorten the time it takes to find position. (It takes about two minutes when there is no position data entered.)

- 1) Press [MENU ESC] [9] and [6].
- 2) Press ▲ or ▼ to select Posn on page 2/2.
- 3) If necessary, press [↻] to switch from north latitude to south latitude or vice versa. Key in latitude.

- 4) If necessary, press [↻] to switch from east longitude to west longitude or vice versa. Key in longitude.
- 5) Press the [NU/CU ENT] key.
- 6) Press the [MENU ESC] key.

8.2 Selecting Units of Measurement

Unit of distance

Distance can be displayed in nautical mile, kilometer or statute mile as follows.

- 1) Press [MENU ESC] [9] and [2]. The UNIT SETUP menu appears.

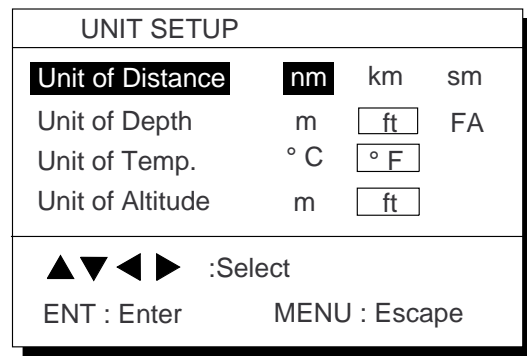


Figure 8-3 UNIT SETUP menu

- 2) Press ▲ or ▼ to select Unit of Distance.
- 3) Press ◀ or ▶ to select unit; nm, km or sm.
- 4) Press the [NU/CU ENT] key.
- 5) Press the [MENU ESC] key.

Unit of depth

- 1) Press [MENU ESC] [9] and [2].
- 2) Press ▲ or ▼ to select Unit of Depth.
- 3) Press ◀ or ▶ to select unit; meter, feet, or fathom.
- 4) Press the [NU/CU ENT] key.
- 5) Press the [MENU ESC] key.

Unit of water temperature

- 1) Press [MENU ESC] [9] and [2].
- 2) Press ▲ or ▼ to select Unit of Temp.
- 3) Press ◀ or ▶ to select unit; Centigrade or Fahrenheit.
- 4) Press [NU/CU ENT] and [MENU ESC].

Unit of altitude

Available only in 3D mode.

- 1) Press [MENU ESC] [9] and [2].
- 2) Press ▲ or ▼ to select Unit of Altitude.
- 3) Press ◀ or ▶ to select unit.
- 4) Press the [NU/CU ENT] key.
- 5) Press the [MENU ESC] key.

8.3 Mark, Character Size and Brilliance

The DISPLAY SETUP menu lets you select the size and brilliance of various markers.

Grid tone

The grid can be displayed in light or dark tone, or turned off.

- 1) Press [MENU ESC] and [1]. The DISPLAY SETUP menu appears.

DISPLAY SETUP			
Grid	<input type="button" value="Dark"/>	Light	Off
Course Bar	<input type="button" value="Dark"/>	Light	Off
Time Mark	<input checked="" type="button" value="Dark"/>	Light	Off
Waypoint Size	<input type="button" value="Large"/>	Small	
Cursor Size	<input type="button" value="Large"/>	Small	
▲▼◀▶ : Select			
ENT : Enter		MENU : Escape	

Figure 8-4 DISPLAY SETUP menu

- 2) Press ▲ or ▼ to select Grid.

- 3) Press ◀ or ▶ to select brilliance.
- 4) Press [NU/CU ENT] and [MENU ESC].

Course bar tone

The course bar can be displayed in light or dark tone, or turned off.

- 1) Press [MENU ESC] and [1].
- 2) Press ▲ or ▼ to select Course Bar.
- 3) Press ◀ or ▶ to select brilliance.
- 4) Press the [NU/CU ENT] key.
- 5) Press the [MENU ESC] key.

Time mark tone

The time mark can be displayed in light or dark tone, or turned off.

- 1) Press [MENU ESC] and [1].
- 2) Press ▲ or ▼ to select Time Mark.
- 3) Press ◀ or ▶ to select brilliance.
- 4) Press the [NU/CU ENT] key.
- 5) Press the [MENU ESC] key.

Waypoint mark size

The size of the waypoint mark can be selected to large or small.

Large waypoint mark

No icon	With icon
12	12 ▲

Small waypoint mark

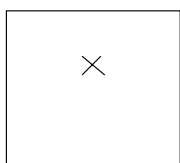


Figure 8-5 Waypoint mark size

- 1) Press [MENU ESC] and [1].
- 2) Press ▲ or ▼ to select Waypoint Size.
- 3) Press ◀ or ▶ to select Large or Small.
- 4) Press [NU/CU ENT] and [MENU ESC].

Cursor size

The size of the cursor can be selected to large or small.

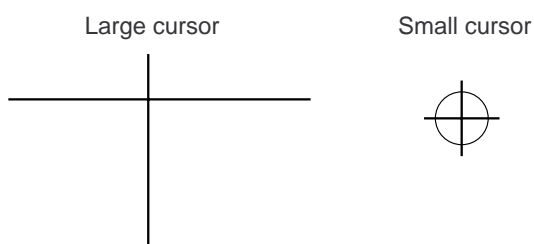


Figure 8-6 Cursor size

- 1) Press [MENU ESC] and [1].
- 2) Press ▲ or ▼ to select Cursor Size.
- 3) Press ◀ or ▶ to select Large or Small.
- 4) Press the [NU/CU ENT] key.
- 5) Press the [MENU ESC] key.

Enlarging characters

The size of the indications of position or user defined display areas can be enlarged on the Data display.

- 1) On the Data display, with no enlarged characters, press the [CURSOR ON/OFF] key to turn on the cursor.
- 2) Operate the cursor keys to select data to enlarge in the window.
- 3) Press the [ZOOM IN] key.

To switch character size from enlarged to normal, press the [ZOOM OUT] key at step 3.

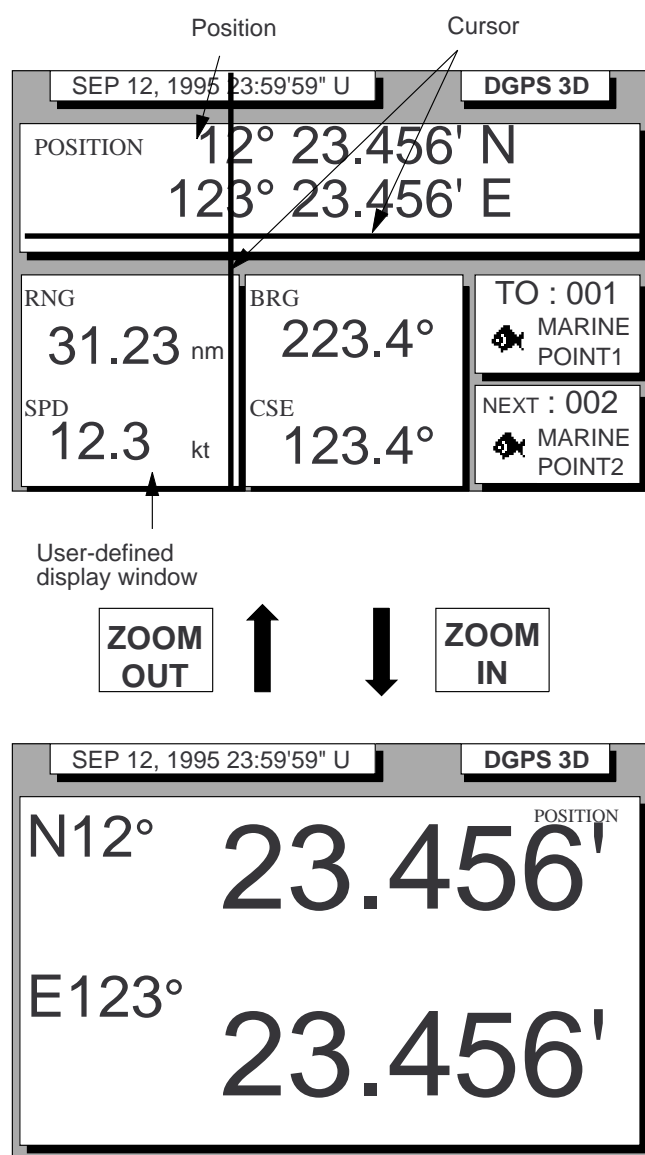


Figure 8-7 How to enlarge indications on the data display

8.4 Settings for Connection of Navigator

Besides its fundamental function of displaying position, the GP-80 can also output various data to external equipment. Before outputting data to external equipment, first determine what data the external equipment requires. Output only necessary data to ensure data will be output correctly.

All data transmitted by marine electronics equipment are prefixed with a two character code called a talker. The same talker must be shared by the transmitting and receiving equipment to transmit and receive data successfully. The GP-80 transmits data using the GP (GPS talker), however it can also transmit using the Loran (LC) or Decca (DE) talker.

Because the GP talker is a relatively new system some early model equipment may not recognize this talker.

DATA 1 output setting

- 1) Press [MENU ESC] [9] and [3]. The DATA 1, 3 OUTPUT SETUP menu appears.

DATA 1, 3 OUTPUT SETUP			
Data Fmt.	183/V1.5	IEC 1162	
Talker ID	GP	<input checked="" type="checkbox"/> LC	DE
Output Data	(00-90 sec)80%		
1.	AAM:00	APA:00	APB:04 BOD:00
2.	BWC:00	BWR:00	BWW:00 GGA:00
3.	GLL:01	RMB:01	RMC:01 VTG:01
4.	WCV:00	WNC:00	WNR:00 WPL:10
5.	XTE:00	ZDA:01	ZLZ:00 ZTG:00
DATA3. Log Pulse	<input checked="" type="checkbox"/> 200ppm	<input type="checkbox"/> 400ppm	
ENT : Enter		MENU : Escape	

Settings shown here are default settings.

This line appears only when LOG is selected by internal jumper wires.

Figure 8-8 DATA 1, 3 OUTPUT SETUP menu

- 2) Press ▲ or ▼ to select Data Fmt.

- 3) Press ◀ or ▶ to select NMEA 0183 (V1.5) or IEC 1162-1.
- 4) Press the [NU/CU ENT] key. Talker ID appears in reverse video.
- 5) Press ◀ or ▶ to select GP, LC or DE.
- 6) Press the [NU/CU ENT] key.
- 7) Enter Tx interval for each output data sentence in line 1. Tx interval is available in 00, 01, 02, 03, 04, 05, 06, 10, 15, 20, 30, 60, and 90 msec.
- 8) Press the [NU/CU ENT] key.
- 9) Enter Tx interval for each output data sentence in lines 2 through 5. Press the [NU/CU ENT] key after setting each line.

For detailed information about Tx interval see the installation manual. However, the settings entered by the installer of the equipment should not be changed unless absolutely necessary.

BWC and WNC are for great circle navigation and BWR and WNR are for rhumb line navigation.

The total data output are shown by percentage on the third line. For best results the total output should not exceed 90%; lengthen the Tx interval of less important data to make the total output less than 90%.

DATA 2 output setting

- 1) Press [MENU ESC] [9] and [4]. The DATA 2 OUTPUT SETUP menu appears.

DATA 2 OUTPUT SETUP			
Data Fmt.	183/V1.5	IEC 1162	
Talker ID	GP	LC	DE
Output Data	(00-90 sec)80%		
1.	AAM:00	APA:00	APB:04 BOD:00
2.	BWC:00	BWR:00	BWW:00 GGA:00
3.	GLL:01	RMB:01	RMC:01 VTG:01
4.	WCV:00	WNC:00	WNR:00 WPL:10
5.	XTE:00	ZDA:01	ZLZ:00 ZTG:00
▲▼◀▶ : Select			
ENT : Enter		MENU : Escape	

Settings shown here are default settings.

Figure 8-9 DATA 2 OUTPUT SETUP menu

- 2) Follow the procedure for setting DATA 1 output.

DATA 3 output setting

The DATA 3 connector can output IEC 1162-1/NMEA 0183 data or log pulse. (For details, see the Installation Manual.) For NMEA 0183, IEC 1162-1 the same data output by DATA 1 is output from DATA 3.

For log pulse, select 200 or 400 pulse per second depending on the device connected.

- 1) Press [MENU ESC] [9] and [3].
- 2) Press ▲ or ▼ to select DATA 3. Log Pulse.
- 3) Press ◀ or ▶ to select log pulse of external equipment; 200ppm or 400ppm.
- 4) Press the [NU/CU ENT] key twice.

Setting DATA 4 to NMEA

The DATA 4 port connects to a personal computer, DGPS receiver or YEOMAN equipment.

- 1) Press [MENU ESC] [9] and [5]. The DATA 4 I/O SETUP (1/2) menu appears.

DATA 4 I/O SETUP		1/2
DATA 4. Level	RS232C	RS422
Data	Out	Com. DGPS
To Next Page		
▲▼◀▶ : Select		
ENT : Enter		MENU : Escape

Appears only when external DGPS receiver is used.

Figure 8-10 DATA 4 I/O SETUP menu (1/2)

- 2) Press ▲ or ▼ to select Level.
- 3) Press ◀ or ▶ to select level of external equipment; RS232C or RS422.
- 4) Press the [NU/CU ENT] key.
- 5) Press ◀ or ▶ to select Out.
- 6) Press ▼ to select To Next Page. The DATA 4 I/O SETUP (2/2) menu appears.

DATA 4 I/O SETUP		<Out> 2/2
To Previous Page		
Data Fmt.	183/V1.5	IEC 1162
Talker ID	GP	LC DE
Output Data	(00-90 sec) 80%	
1.	AAM:04	APA:00 APB:04 BOD:00
2.	BWC:00	BWR:00 BWW:00 GGA:10
3.	GLL:01	RMB:00 RMC:00 VTG:01
4.	WCV:04	WNC:00 WNR:00 WPL:10
5.	XTE:04	ZDA:01 ZLZ:00 ZTG:00
ENT : Enter		
MENU : Escape		

Figure 8-11 DATA 4 I/O SETUP menu (2/2)

- 7) Follow "DATA 1 output setting" from step 2.

8.5 Receiving Data from Personal Computer

Loading lighthouse/buoy data

Lighthouse data can be downloaded from a personal computer, through the DATA 4 connector.

- 1) Press [MENU ESC] [9] and [5].
- 2) Press ▲ or ▼ to select Level.
- 3) Press ◀ or ▶ to select level of personal computer; RS232C or RS422.
- 4) Press the [NU/CU ENT] key.
- 5) Press ▶ to select Com.
- 6) Press ▼ to select To Next Page. The DATA 4 I/O SETUP menu appears.

DATA 4 I/O SETUP <Com.> 2/2			
To Previous Page			
Baud Rate	◀ 9600 bps ▶		
Load Data	L.House	WPT/RTE	WPT
Command	Stop	Start	
Save Data	WPT/RTE		
Command	Stop	Start	
▲▼◀▶ : Select			
ENT : Enter		MENU : Escape	

Figure 8-12 DATA 4 I/O SETUP menu (2/2)

- 7) Press ▲ or ▼ to select Baud Rate.
- 8) Press ◀ or ▶ to select baud rate; 4800bps, 9600bps, or 19200bps.
- 9) Press the [NU/CU ENT] key.
- 10) Press ◀ to select L.House.
- 11) Press ▼ to select Command. Stop, on the same line as Command, appears in reverse video.
- 12) Press ▶ to select Start. The message shown in Figure 8-13 appears.

```

Loading erases current data
Are you sure to load ?

ENT: Yes   MENU:No
  
```

Figure 8-13

- 13) Press the [NU/CU ENT] key. The message shown in Figure 8-14 appears while data is being loaded.

```

Now loading
Light House data !

MENU:Stop
  
```

Figure 8-14

- 14) Operate the computer to output data. When data is loaded, the cursor shifts to Stop.

- 15) Press the [MENU ESC] key.

Stopping loading of data

- 1) Press the [MENU ESC] key. The message shown in Figure 8-15 appears.

```

Are you sure to stop ?

ENT: Yes   MENU:No
  
```

Figure 8-15

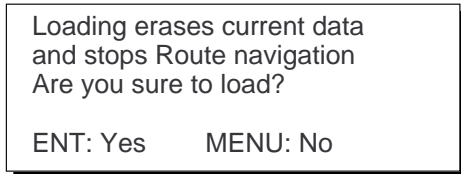
- 2) To quit loading, press the [NU/CU ENT] key. The cursor shifts to Stop.
- 3) To start loading, select Start.
- 4) Press the [NU/CU ENT] key.

Viewing lighthouse/buoy data

To view lighthouse/bouy data on the display, place the cursor on the lighthouse mark. Data of the lighthouse/buoy appears at the top of the display.

Loading waypoint/route

- 1) Do steps 1 through 9 in "Loading light-house/buoy data."
- 2) Press ◀ or ▶ to select WPT/RTE.
- 3) Press ▼ to select Command. Stop, on the same line as Command, appears in reverse video.
- 4) Press ▶ to select Start. The message shown in Figure 8-16 appears.

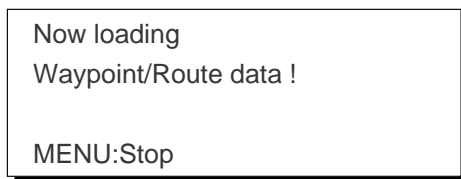


```
Loading erases current data
and stops Route navigation
Are you sure to load?

ENT: Yes    MENU: No
```

Figure 8-16

- 5) Press the [NU/CU ENT] key. The message shown in Figure 8-17 appears.

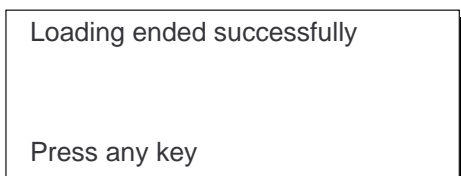


```
Now loading
Waypoint/Route data !

MENU: Stop
```

Figure 8-17

- 6) Operate the computer to output data. When data is loaded, the cursor shifts to Stop.
- 7) Press the [MENU ESC] key. When data is loaded successfully, The message in Figure 8-18 appears.

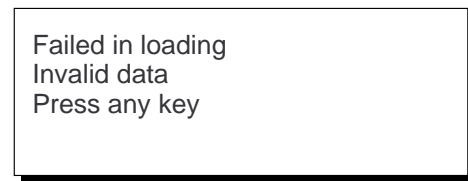


```
Loading ended successfully

Press any key
```

Figure 8-18

If data could not be loaded, the message shown in Figure 8-19 appears.

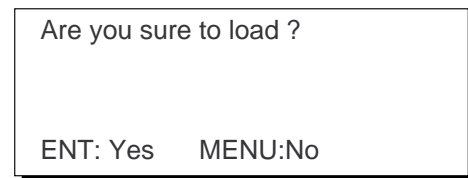


```
Failed in loading
Invalid data
Press any key
```

Figure 8-19

Loading waypoint data from YEOMAN equipment

- 1) Do steps 1 through 9 in "Loading light-house data."
- 2) Press ◀ or ▶ to select WPT.
- 3) Press ▼ to select Command.
- 4) Press ▶ to select Start. The message shown in Figure 8-20 appears.

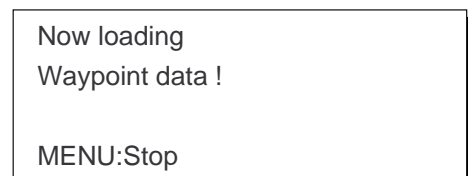


```
Are you sure to load ?

ENT: Yes    MENU: No
```

Figure 8-20

- 5) Press the [NU/CU ENT] key. The message shown in Figure 8-21 appears.



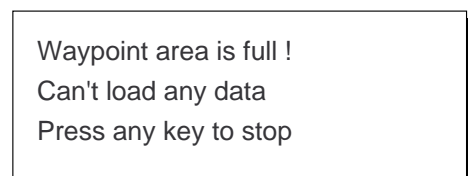
```
Now loading
Waypoint data !

MENU: Stop
```

Figure 8-21

- 6) Operate the YEOMAN to output data.

When data is loaded, the cursor automatically shifts to "Stop". Waypoints are loaded into empty areas. When the waypoint area becomes full, the message shown in Figure 8-22 appears.



```
Waypoint area is full !
Can't load any data
Press any key to stop
```

Figure 8-22

- When the data is loaded, press [CU/NU ENT] and [MENU ESC]. The message shown in Figure 8-23 appears.

The number of valid and invalid waypoints appears in the message.

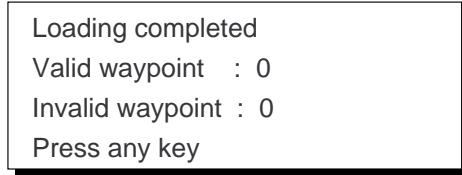


Figure 8-23

- Press the [MENU ESC] key twice.

Saving data to personal computer

Waypoint and route data can be saved to a personal computer.

- Press [MENU ESC] [9] and [5].
- Press ▲ or ▼ to select Level.
- Press ◀ or ▶ to select level; RS232C or RS422.
- Press the [NU/CU ENT] key. "Data" appears in reverse video.
- Press ▶ to select Com.
- Press ▼ to select Next Page.
- Press ▲ or ▼ to select Baud Rate.
- Press ◀ or ▶ to select baud rate; 4800bps, 9600bps, or 19200bps.
- Press ▼ to select Command (under the Save Data line). Stop, on the same line as Command, appears in reverse video.
- Press ▶ to select Start. The message shown in Figure 8-24 appears.

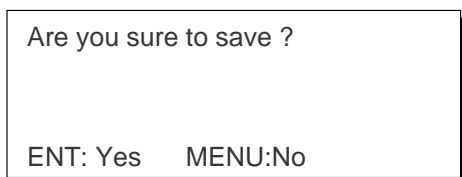


Figure 8-24

- Press the [NU/CU ENT] key. The message shown in Figure 8-25 appears while data is being saved.

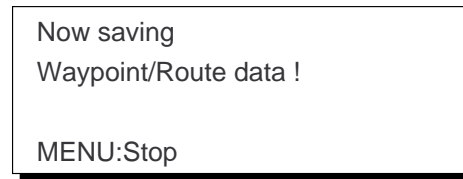


Figure 8-25

- Save data at the computer.
- Press the [MENU ESC] key. When data is saved, the cursor shifts to Stop.
- Press the [MENU ESC] key.

8.6 DGPS Settings

A DGPS beacon receiver (built in or external) may be connected to the GP-80 to further refine position accuracy. Set up to receive the DGPS beacon signal as follows.

Selecting DGPS station

The default setting is "manual".

Automatic

The GR-800 can automatically select optimum reference station by feeding it position data. If it takes more than 5 minutes to fix DGPS position at the automatic mode, switch to manual mode. Use at manual mode when an external beacon receiver has no automatic function of station selection.

- Press [MENU ESC] [9] and [7] to display the DGPS SETUP menu.

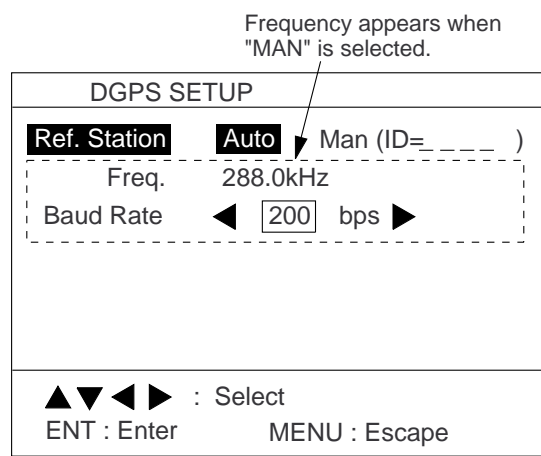


Figure 8-26 DGPS SETUP menu

- 2) Press ▲ or ▼ to select Ref. Station.
- 3) Press ◀ or ▶ to select Auto.
- 4) Press the [NU/CU ENT] key.
- 5) Press the [MENU ESC] key.

Manual

Enter four digit ID number, frequency and baud rate of station.

Reference

- ID number: Appendix at end of this manual
- Frequency, baud rate : "DGPS REFERENCE LIST"

- 1) Press [MENU ESC] [9] and [7] to display the DGPS SETUP menu.
- 2) Press ▲ or ▼ to select Ref. Station.
- 3) Press ◀ or ▶ to select Man.
- 4) Enter four digit ID number. You can clear an entry by the [CLEAR] key. If the number entered is invalid, the buzzer sounds and the message "INVALID ID" appears on the display for three seconds.

If there is no ID number, press the [CLEAR] key.

- 5) Press the [NU/CU ENT] key.
- 6) Enter frequency in four digits (283.5kHz to 325.0kHz).
- 7) Press the [NU/CU ENT] key. "Baud Rate" appears in reverse video.
- 8) Press ◀ or ▶ to select baud rate; 25, 50, 100 or 200bps.
- 9) Press the [MENU ESC] key.

Setup for external DGPS beacon receiver

When an external DGPS beacon receiver is connected to the DATA 4 connector, set up the GP-80 according to specification of DPGS beacon receiver connected as follows.

- 1) Press [MENU ESC] [9] and [5].
- 2) Press ▲ or ▼ to select Level.
- 3) Press ◀ or ▶ to select level; RS232C or RS422.
- 4) Press the [NU/CU ENT] key.
- 5) Press ◀ or ▶ to select DGPS.
- 6) Press ▼ to select To Next Page.

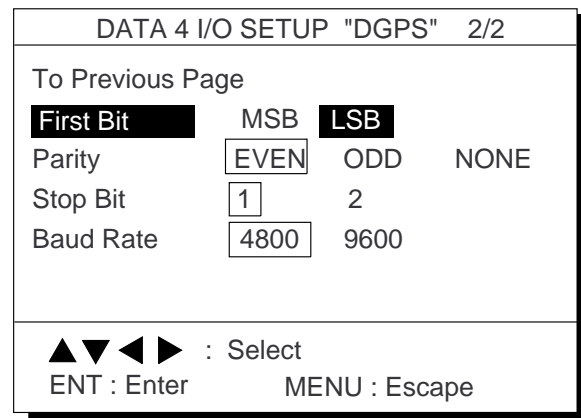


Figure 8-27 DATA 4 I/O SETUP "DGPS" 2/2 menu

- 7) Press ▲ or ▼ to select First Bit.
- 8) Press ◀ or ▶ to select first bit; MSB or LSB.
- 9) Press ▼ to select Parity.
- 10) Press ◀ or ▶ to select parity bit; EVEN, ODD or NONE.
- 11) Press ▼ to select Stop Bit.
- 12) Press ◀ or ▶ to select stop bit; 1 or 2.
- 13) Press ▼ to select Baud Rate.
- 14) Press ◀ or ▶ to select baud rate; 4800 or 9600.
- 15) Press the [MENU ESC] key.

8.7 Displaying GPS Monitor Displays

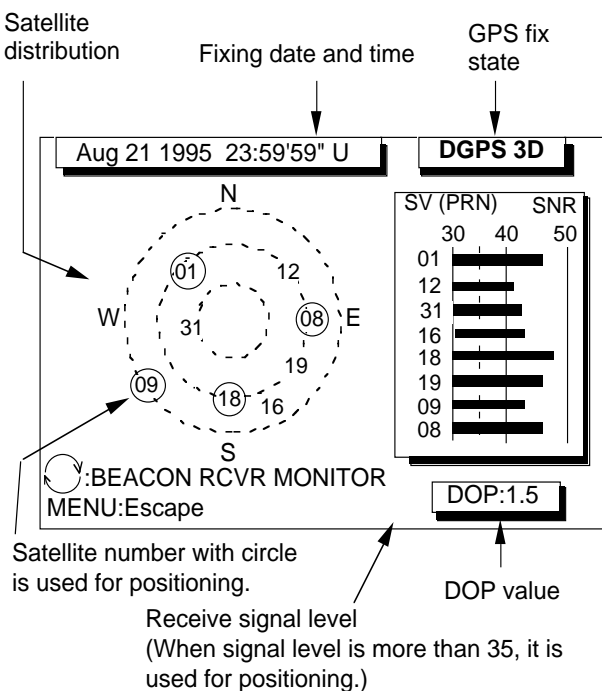
Three GPS monitor displays provide GPS information:

- **Satellite monitor** which shows position of GPS satellites
- **Beacon receiver monitor** which displays DGPS beacon station information
- **DGPS beacon station message monitor** which displays messages received from beacon stations

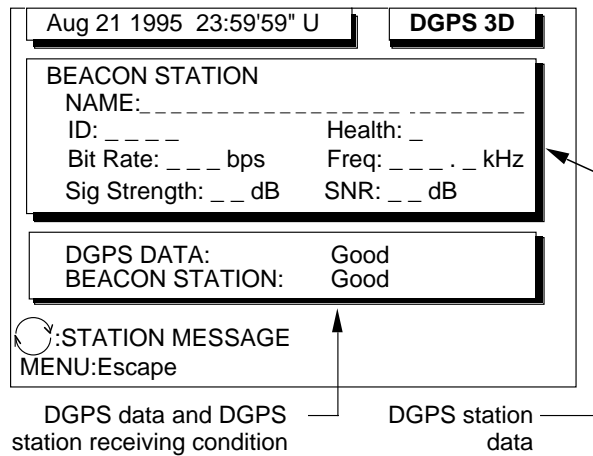
To display the GPS monitor displays;

- 1) Press [MENU ESC] [7].
- 2) Press [↻] to display the GPS monitor you want to view.
- 3) Press the [MENU ESC] to escape.

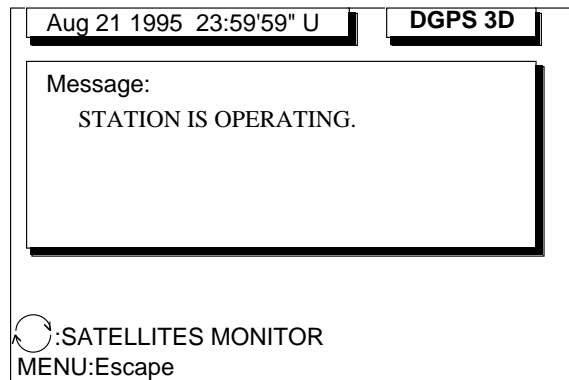
Number, bearing and elevation angle of all satellites in view of the GPS receiver appear. Satellites being used in fixing position are circled with a solid line.



SATELLITES MONITOR



BEACON RECEIVER MONITOR



STATION MESSAGE



Return to SATELLITES MONITOR

Figure 8-28 GPS monitor displays

9. MAINTENANCE & TROUBLESHOOTING

9.1 Clearing the Memory

The GP-80 has two memories: GPS memory and plotter memory.

Clearing the plotter memory

The plotter memory holds plotted track and mark data. When you clear the plotter memory, all track and marks are cleared and all corresponding default settings are restored.

- 1) Press [MENU ESC] [9] and [9] to display the CLEAR MEMORY menu.

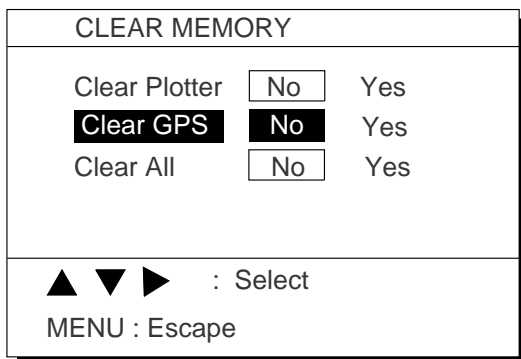


Figure 9-1 CLEAR MEMORY menu

- 2) Press ▲ or ▼ to select Clear Plotter.
- 3) Press ► to select Yes. The following message appears.

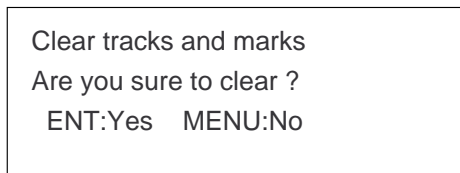


Figure 9-2

- 4) Press the [NU/CU ENT] key.

Clearing the GPS memory

The GPS memory stores GPS information, including the Almanac. When you clear the GPS memory, all GPS information is erased.

- 1) Press [MENU ESC] [9] and [9] to display the CLEAR MEMORY menu.
- 2) Press ▲ or ▼ to select Clear GPS.
- 3) Press ► to select Yes. The following message appears.

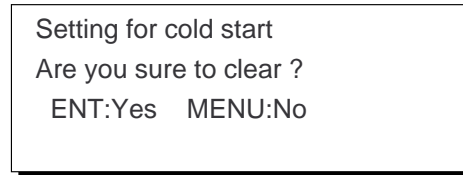


Figure 9-3

- 4) Press the [NU/CU ENT] key.

Clearing GPS and plotter memories

To clear both GPS and plotter memories;

- 1) Press [MENU ESC] [9] and [9] to display the CLEAR MEMORY menu.
- 2) Press ▲ or ▼ to select Clear All.
- 3) Press ► to select Yes. The message shown in Figure 9-4 appears.

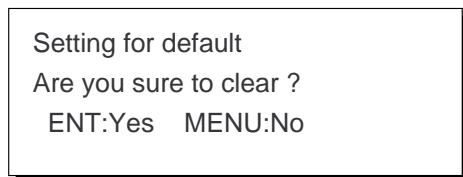


Figure 9-4

- 4) Press the [NU/CU ENT] key.

Note: The equipment may lock after clearing the GPS and plotter memories. Reapply power to the equipment to restore normal operation.

9.2 Preventative Maintenance

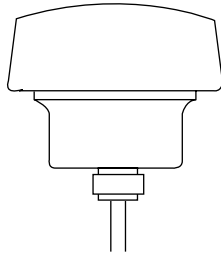
Regular maintenance is necessary to maintain performance. Check the items mentioned below monthly to keep the equipment in good working order.

Antenna unit

Check for fixing bolts for tightness.

Antenna cable

Check connector for tightness, rust, damage and water leaks.



Power cable

Check for tight connection.

Ground terminal

Check for rust and tight connection.

Fuse

The 2A fuse in the power cable protects the unit from overvoltage and equipment fault. If the fuse blows, find out the cause before replacing the fuse. If the fuse blows after replacement, request service.

WARNING

Use only a 2A fuse in the power cable.

Use of different fuses may cause fire.

9.3 Error Messages

Error messages appear on the display to alert you to possible trouble.

WARNING

Do not open the display unit cover.
High voltage exists inside.

If the unit is not working properly,
contact your dealer.

GPS error

When GPS signal is suddenly lost and position cannot be calculated within one minute the message shown in Figure 9-5 appears.

GPS No fix

Figure 9-5 GPS error message

This message may appear when there is an interfering object between the satellite and GPS receiver (for example, mast) or the antenna cable is disconnected.

DOP error

When PDOP value exceeds 6 in the 3D mode, or HDOP value exceeds 4 in the 2D mode, this error occurs and following indication appears.

DOP Error

Figure 9-6 DOP error message

DGPS error

When DGPS data contains errors or the DGPS beacon station is experiencing transmitting problems, the message shown in Figure 9-7 appears.

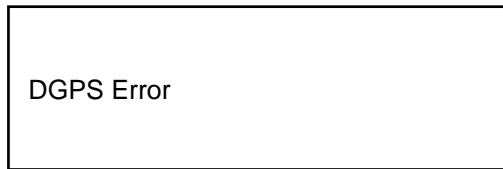


Figure 9-7 DGPS error message

Self test error message

If the self test (conducted when turning on the power) finds equipment error, the message shown in Figure 9-8 appears.

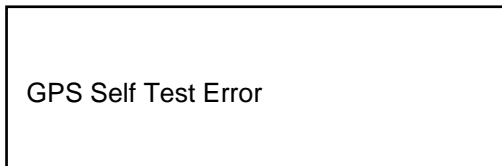


Figure 9-8 Self test error message

If the self test error message appears, consult your dealer for advice.

9.4 Troubleshooting

The table which follows provides troubleshooting procedures which you can follow to restore normal operation. If normal operation cannot be restored, ask your dealer for advice.

Table 9-1 Troubleshooting table

If...	Then...						
you cannot turn on the power	<ul style="list-style-type: none"> • check power connector for tight connection. • check if ship's mains is off. • check for blown fuse. 						
position cannot be fixed	<ul style="list-style-type: none"> • check antenna cable for tight connection and water leakage. • check if functional satellite has been disabled: [MENU ESC] [9] [6] 						
position is wrong	<ul style="list-style-type: none"> • check if correct geodetic chart is entered: [MENU ESC] [9] [6] • apply position correction to GPS position: [MENU ESC] [9] [6] 						
data cannot be transmitted to external equipment	<ul style="list-style-type: none"> • check if data format is correct: [MENU ESC] [9] [3] [9] [4] [9] [5] See the installation manual for further details. • Tx interval may be set to "0". Select proper interval: [MENU ESC] [9] [3] [9] [4] [9] [5] See the installation manual for further details. • Check appropriate settings on external equipment. • Check connections: <table border="0" style="margin-left: 20px;"> <tr> <td>GP-80</td> <td>external equipment</td> </tr> <tr> <td>TD-A</td> <td>RD-A</td> </tr> <tr> <td>TD-B</td> <td>RD-B</td> </tr> </table> 	GP-80	external equipment	TD-A	RD-A	TD-B	RD-B
GP-80	external equipment						
TD-A	RD-A						
TD-B	RD-B						

9.5 Self Tests

Memory and I/O circuits test

- 1) Press [MENU ESC] and [8] to display the SELF TESTS menu.

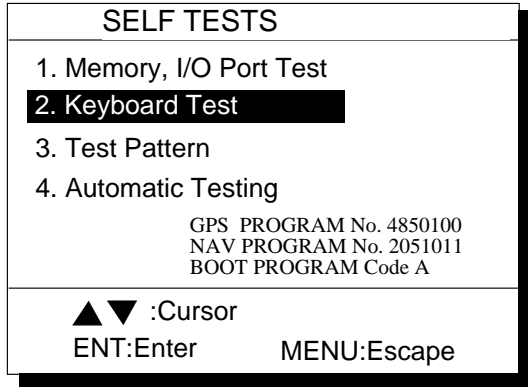


Figure 9-9 SELF TESTS menu

- 2) Press [1].

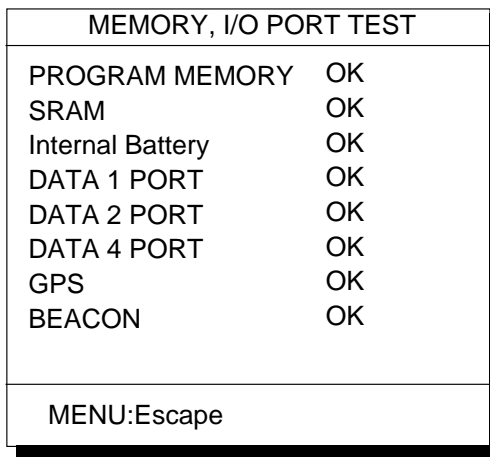


Figure 9-10 MEMORY, I/O PORT TEST display

- 3) When testing is finished, press the [MENU ESC] key to escape and return to the Self Test menu. (Testing continues if the key is not pressed.)

OK appears to the right of PROGRAM, SRAM and Internal Battery when those devices are normal; NG (No Good) appears when an abnormality is found.

OK appears to the right of GPS and BEACON when they are normal; NG and 16 hexadecimal figure appear when an abnormality is found.

Whenever NG or 16 hexadecimal figure appears contact your dealer for advice.

DATA 1 PORT, DATA 2 PORT and DATA 4 PORT show results of communication exchange with external equipment connected to those ports. Therefore, if no equipment is connected to those ports, NG appears as the results of the self test for those ports.

- 4) Press the [MENU ESC] key to escape.

Note: The life of internal battery is approximately 5 years.

Name	Type	Code No.
Lithium	CR2450-F2ST2	000-133-495

Keyboard test

- 1) Press [MENU ESC] [8] and [2] to display the KEYBOARD TEST screen.

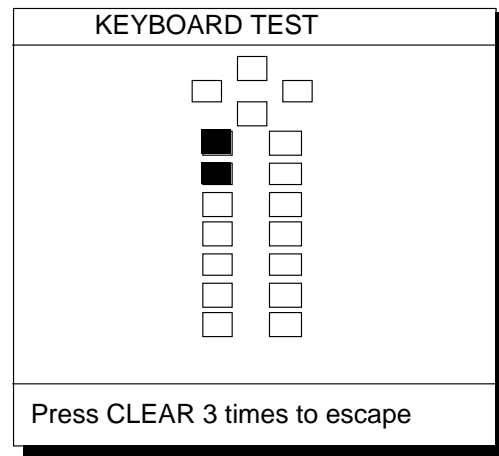


Figure 9-11 KEYBOARD TEST screen

- 2) Press each key one by one. A key's corresponding location on the screen lights in reverse video if the key is normal.
- 3) To quit the keyboard test, press the [CLEAR] key three times. Control is returned to the SELF TESTS menu.
- 4) Press the [MENU ESC] key.

Display test

- 1) Press [MENU ESC] [8] and [3] to display the test pattern screens.
- 2) To change the test pattern, press the [NU/CU ENT] key. Each time the key is pressed one of the patterns shown in Figure 9-12 appears.

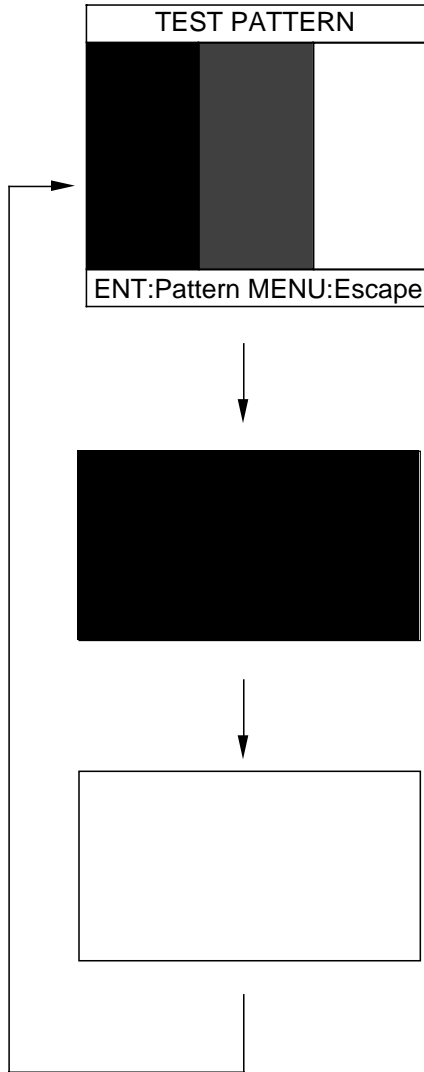


Figure 9-12 Test patterns 1 and 2

- 3) To quit the test pattern, press the [CLEAR] key three times. Control is returned to the SELF TESTS menu.
- 4) Press the [MENU ESC] key.

Automatic testing

This feature conducts all self tests continuously.

- 1) Press [MENU ESC] [8] and [4]. Self tests are conducted continuously in the order of memory, I/O test, keyboard test and test pattern.
- 2) To stop testing, press the [MENU ESC] key.
- 3) Press the [MENU ESC] key.

10. INTRODUCTION TO GPS

10.1 What is GPS?

GPS is an acronym meaning Global Positioning System. GPS (sometimes referred to as NAVSTAR) is a highly precise satellite navigation system developed by the U.S. Department of Defense.

When full global coverage becomes available, a constellation of 24 satellites emplaced in nearly 20,000-kilometer high 12-hour circular orbits will provide highly precise, continuous, worldwide, all-weather position plus time and velocity information to GPS receiver-equipped vehicles, vessels and aircraft.

10.2 How the GPS Receiver Calculates Position

The GPS receiver's position is continuously fixed by receiving 3 (or 4) satellites in line-of-sight of the GPS receiver. The basic steps in position fixing are as below.

- 1) GPS satellites continually transmit their own precise orbital data called ephemeris. The GPS receiver computes satellites' position by this data.
- 2) The GPS receiver measures very accurate distance to the satellites.
- 3) Satellite locations and their distances from the GPS receiver are known. The GPS receiver fixes its own position by triangulation.

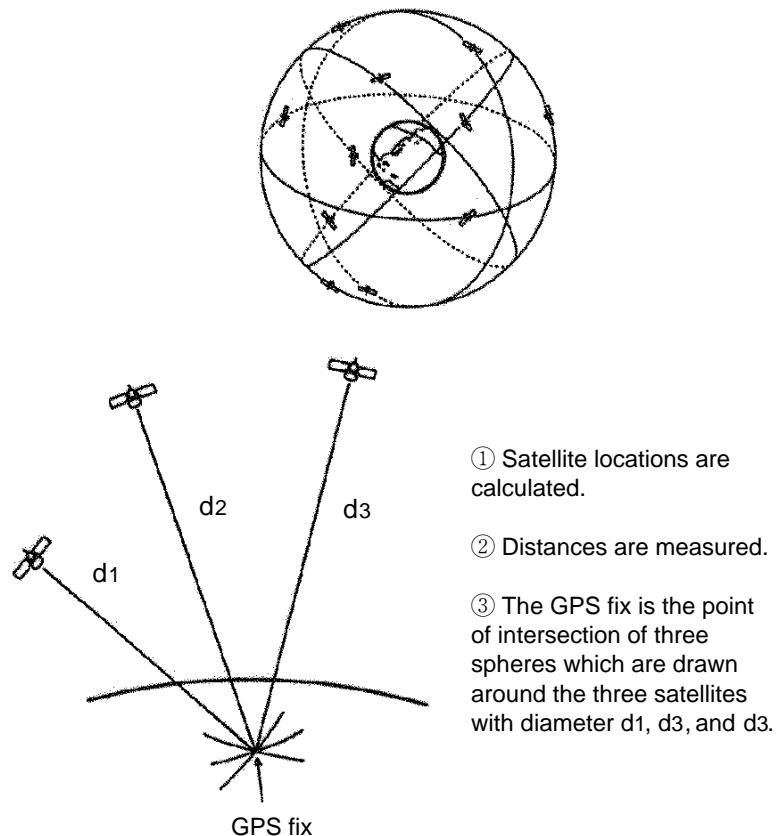
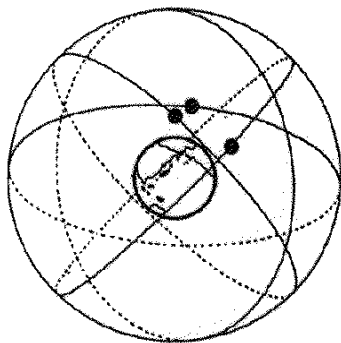


Figure 10-1 How the GPS receiver calculates position

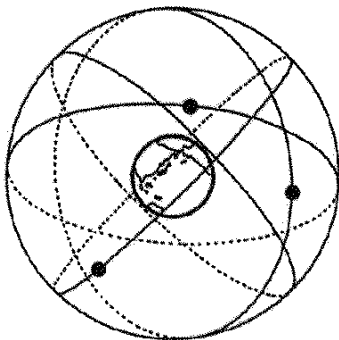
10.3 Position-fixing Accuracy (HDOP)

In radar position-fixing, most accurate position fixes are obtained when the targets used are spaced nearly 90° from each other. Similarly, GPS position fixing accuracy is subject to satellite location. Generally, the further apart the satellites are from one another, the greater the position-fixing accuracy.

For example, take a look at Figure 10-2. In both situations a fix is obtainable in the Northern Pacific region because three satellites are in line-of-sight. However, accuracy will be higher in the bottom figure since the satellites are spread farther apart than the satellites in the top figure.



LOW ACCURACY



HIGH ACCURACY

Figure 10-2 Satellite positions and accuracy of position fix

The index for position-fixing accuracy is known as HDOP (Horizontal Dilution of Precision) for 2D mode or PDOP for 3D mode. In simpler terms it is the geometrical relationship among 3 (or 4) satellites. The higher the HDOP value the less accurate the position fix. The error in distance is proportional to the HDOP value as shown in Figure 10-3.

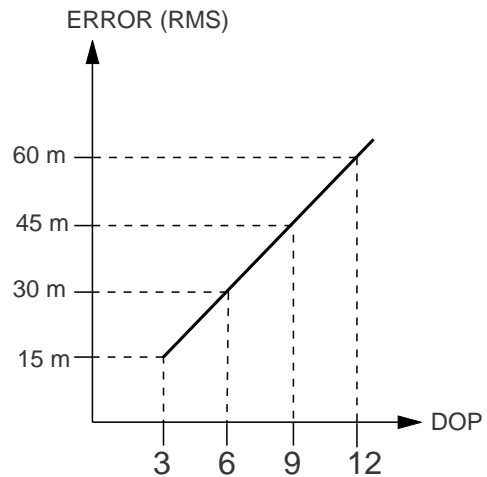


Figure 10-3 HDOP rate and position error

Note: In this manual HDOP is referred to as DOP.

Specifications

GPS Receiver

Number of receiving channels	8 channels parallel, 8 satellite tracking
Rx frequency	1575.42MHz
Rx code	C/A code
Position fixing system	All in view, 8-state Kalman filter
Position Accuracy	Approx. 50m, 95% of the time, Horizontal dilution of position (HDOP) ≤ 4 <i>Note: All GPS receiver are subject to degradation of position and velocity accuracies under the U.S. Department of Defence. Position may be degraded.</i> DGPS: Approx. 5 m, 95% of the time
Tracking velocity	900 kts
Position-fixing time	Warm start: 20 seconds Cold start: 2 minutes
Position update interval	1 second

Display Section

LCD	122 x 92 mm (320 x 240 dot matrix)
Display mode	Plotter modes 1 and 2, Highway, Navigation, Data
Display	Mercator projection Track recording and mark capacity: 2,000 pts. Lighthouse, buoy graphic (option) YEOMAN waypoint display
Waypoint storage capacity	200 pts. with comment (12 character)
Route storage capacity	30 routes (30 waypoints per route) Simple route: 1 route/30 waypoints
Alarms	Waypoint arrival, Anchor watch, Cross track error, Speed, Trip, Water temperature, depth

(Continued on next page)

Data Input/Output

Number of ports	4 I/O ports
Data format	IEC 1162-1/NMEA 0183
Input data	<ul style="list-style-type: none">• NMEA 0183: AGFPA, DBT, DPT, MTW, TLL• DPGS; RTCM SC104 Ver. 2.1• Universal data from personal computer.
Output data	IEC 1162-1/NMEA 0183 (Ver. 1.5); AAM, APA, APB, BOD, BWC, BWR, BWW, GGA, GLL, RMB, RMC, VTG, WCV, WNC, WNR, WPL, XTE, ZDA, ZLZ, ZTG

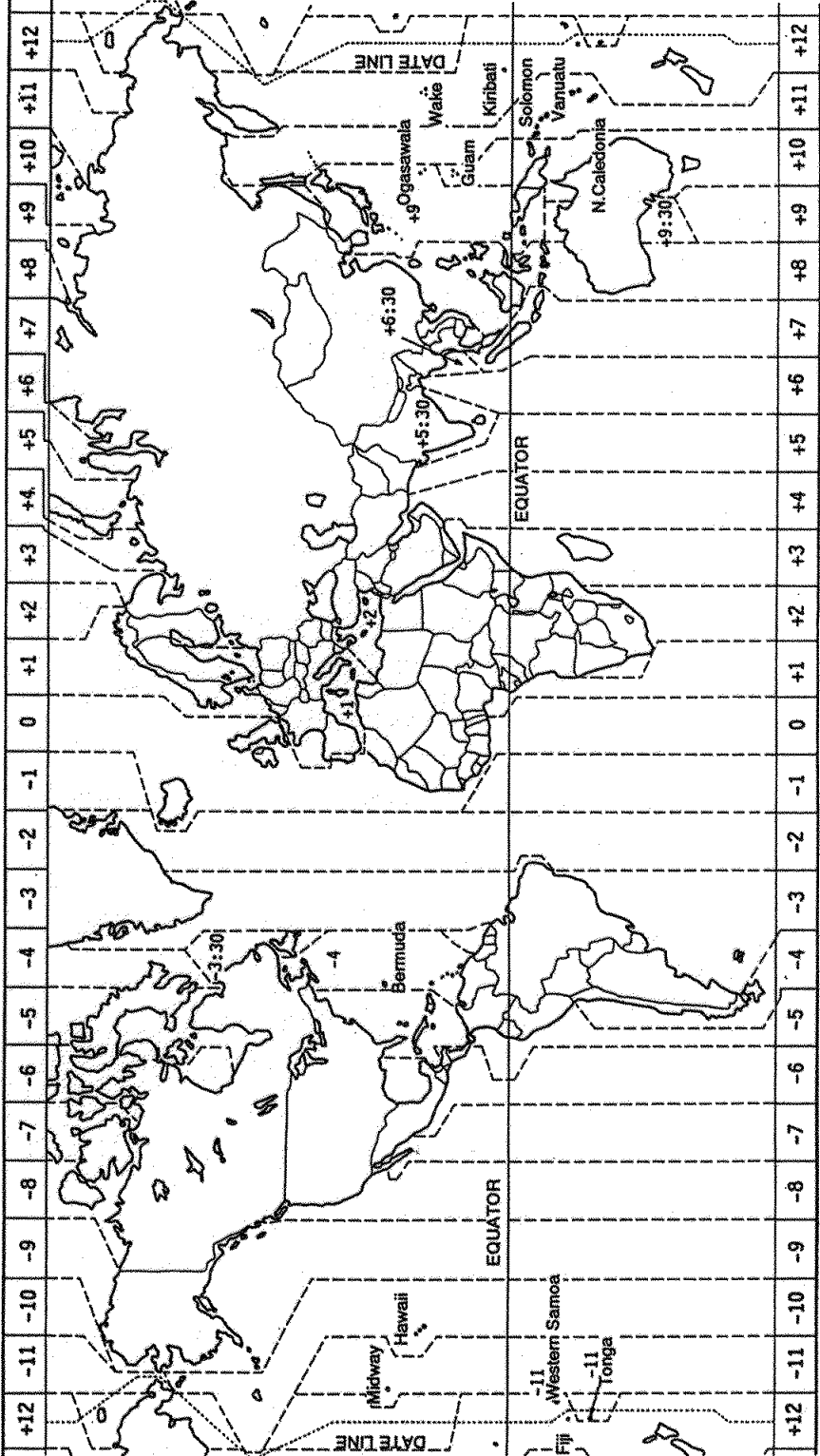
Power Supply & Environmental Conditions

Power supply and power consumption	10.2 to 31.2V DC, less than 10 W
Useable environment	Antenna unit: -25°C to +70°C Receiver unit: -15°C to +55°C Beacon antenna unit: -20°C to +70°C
Humidity	95% (40°C)
Waterproofing specification	Antenna unit: IEC 529 1PX6 Display unit: IEC 529 1PX5 (USCG CFR-46)
Resistancy	1 to 12.5Hz: 3.2 mmpp 12.5 to 25Hz: 0.8 mmpp 25 to 50Hz: 0.2 mmpp

Dimensions and Weight

Dimenions	Antenna unit: $\varnothing 62 \times 67$ mm Display unit: 160 x 250 x 65mm Beacon antenna unit: $\varnothing 64 \times 212$ mm
Mass	Antenna unit: 0.1 kg Display unit: 2.2 kg Beacon antenna unit: 0.6 kg

Time Differences



Geodetic Chart List

001: WGS84		
002: WGS72		
003: TOKYO	: Mean Value (Japan, Korea & Okinawa)	
004: NORTH AMERICAN 1927	: Mean Value (CONUS)	
005: EUROPEAN 1950	: Mean Value	
006: AUSTRALIAN GEODETIC 1984	: Australia & Tasmania	
007: ADINDAN	: Mean Value (Ethiopia & Sudan)	
008:	: Ethiopia	
009:	: Mali	
010:	: Senegal	
011:	: Sudan	
012: AFG	: Somalia	
013: AIN EL ABD 1970	: Bahrain Is.	
014: ANNA 1 ASTRO 1965	: Cocos Is.	
015: ARC 1950	: Mean Value	
016:	: Botswana	
017:	: Lesotho	
018:	: Malawi	
019:	: Swaziland	
020:	: Zaire	
021:	: Zambia	
022:	: Zimbabwe	
023: ARC 1960	: Mean Value (Kenya & Tanzania)	
024:	: Kenya	
025:	: Tanzania	
026: ASCENSION IS. 1958	: Ascension Is.	
027: ASTRO BEACON "E"	: Iwo Jima Is.	
028: ASTRO B4 SOR. ATOLL	: Tern Is.	
029: ASTRO POS 71/4	: St. Helena Is.	
030: ASTRONOMIC STATION 1952	: Marcus Is.	
031: AUSTRALIAN GEODETIC 1966	: Australia & Tasmania	
032: BELLEVUE (IGN)	: Efate & Erromango Islands	
033: BERMUDA 1957	: Bermuda Islands	
034: BOGOTA OBSERVATORY	: Columbia	
035: GAUPO INCHAUSPE	: Argentina	
036: CANTON IS. 1966	: Phoenix Islands	
037: CAPE	: South Africa	
038: CAPE CANAVERAL	: Mean Value (Florida & Bahama Islands)	
039: CARTHAGE	: Tunisia	
040: CHATHAM 1971	: Chatham Is. (New Zealand)	
041: CHUA ASTRO	: Paraguay	
042: CORREGO ALEGRE	: Brazil	
043: DJAKARTA (BATAVIA)	: Sumatra Is. (Indonesia)	
044: DOS 1968	: Gizo Is. (New Georgia Is.)	
045: EASTER IS. 1967	: Easter Is.	
046: EUROPEAN 1950 (Cont'd)	: Western Europe	
047:	: Cyprus	
048:	: Egypt	
049:	: England, Scotland, Channel & Shetland Islands	
050:	: England, Ireland, Scotland, & Shetland Islands	
051:	: Greece	
052:	: Iran	
053:	: Italy, Sardinia	
054:	: Italy, Sicily	
055:	: Norway & Finland	
056:	: Portugal & Spain	
057: EUROPEAN 1979	: Mean Value	
058: GANDAJIKA BASE	: Republic of Maldives	
059: GEODETIC DATUM 1949	: New Zealand	
060: GUAM 1963	: Guam Is.	
061: GUX 1 ASTRO	: Guadalcanal Is.	
062: HJORSEY 1955	: Iceland	
063: HONG KONG 1363	: Hong Kong	
064: INDIAN	: Thailand & Vietnam	
065:	: Bangladesh, India & Nepal	
066: IRELAND 1965	: Ireland	
067: ISTS 073 ASTRO 1969	: Diego Garcia	
068: JOHNSTON IS. 1961	: Johnston Is.	
069: KANDAWALA	: Sri Lanka	
070: KERGUELEN IS.	: Kerguelen Is.	
071: KERTAUI 1948	: West Malaysia & Singapore	
072: LA REUNION	: Mascarene Is.	
073: L. C. 5 ASTRO	: Cayman Brac Is.	
074: LIBERIA 1964	: Liberia	
075: LUZON	: Philippines (excl. Mindanao Is.)	
076:	: Mindanao Is.	
077: MAHE 1971	: Mahe Is.	
078: MARCO ASTRO	: Salvage Islands	
079: MASSAWA	: Eritrea (Ethiopia)	
080: MERCHICH	: Morocco	
081: MIDWAY ASTRO 1961	: Midway Is.	
082: MINNA	: Nigeria	
083: NAHRWAN	: Masirah Is. (Oman)	
084:	: United Arab Emirates	
085:	: Saudi Arabia	
086: NAMIBIA	: Namibia	
087: MAPARIMA, BWI	: Trinidad & Tobago	
088: NORTH AMERICAN 1927	: Western United States	
089:	: Eastern United States	
090:	: Alaska	
091:	: Bahamas (excl. San Salvador Is.)	
092:	: Bahamas, San Salvador Is.	
093:	: Canada (incl. Newfoundland Is.)	
094:	: Alberta & British Columbia	
095:	: East Canada	
096:	: Manitoba & Ontario	
097:	: Northwest Territories & Saskatchewan	
098:	: Yukon	
099:	: Canal Zone	
100:	: Caribbean	
101:	: Central America	
102:	: Cuba	
103:	: Greenland	
104:	: Mexico	
105: NORTH AMERICAN 1983	: Alaska	
106:	: Canada	
107:	: CONUS	
108:	: Mexico, Central America	
109: OBSERVATORIO 1966	: Corvo & Flores Islands (Azores)	
110: OLD EGYPTIAN 1930	: Egypt	
111: OLD HAWAIIAN	: Mean Value	
112:	: Hawaii	
113:	: Kauai	
114:	: Maui	
115:	: Oahu	
116: OMAN	: Oman	
117: ORDNANCE SURVEY OF GREAT BRITAIN 1936: Mean Value		
118:	: England	
119:	: England, Isle of Man & Wales	
120:	: Scotland, & Shetland Islands	
121:	: Wales	
122: PICO DE LAS NIVIES	: Canary Islands	
123: PITCAIRN ASTRO 1967	: Pitcairn Is.	
124: PROVISIONS SOUTH CHILEAN 1963: South Chile (near 53° S)		
125: PROVISIONAL SOUTH AMERICAN 1956: Mean Value		
126:	: Bolivia	
127:	: Chile-Northern Chile (near 19° S)	
128:	: Chile-Southern Chile (near 43° S)	
129:	: Columbia	
130:	: Ecuador	
131:	: Guyana	
132:	: Peru	
133:	: Venezuela	
134: PUERTO RICO	: Puerto Rico & Virgin Islands	
135: QATAR NATIONAL	: Qatar	
136: QORNOQ	: South Greenland	
137: ROME 1940	: Sardinia Islands	
138: SANTA BRAZ	: Sao Maguel, Santa Maria Islands (Azores)	
139: SANTO (DOS)	: Espirito Santo Is.	
140: SAPPER HILL 1943	: East Falkland Is.	
141: SOUTH AMERICAN 1969	: Mean Value	
142:	: Argentina	
143:	: Bolivia	
144:	: Brazil	
145:	: Chile	
146:	: Columbia	
147:	: Ecuador	
148:	: Guyana	
149:	: Paraguay	
150:	: Peru	
151:	: Trinidad & Tobago	
152:	: Venezuela	
153: SOUTH ASIA	: Singapore	
154: SOUTHEAST BASE	: Porto Santo & Madeira Islands	
155: SOUTHWEST BASE	: Faial, Graciosa, Pico, Sao Jorge, & Terceira Is.	
156: TIMBALAI 1948	: Brunei & East Malaysia (Sarawak & Sadah)	
157: TOKYO	: Japan	
158:	: Korea	
159:	: Okinawa	
160: TRISTAN ASTRO 1968	: Tristan da Cunha	
161: VITI LEVU 1916	: Viti Levu Is. (Fiji Islands)	
162: WAKE-ENIWETOK 1960	: Marshall Islands	
163: ZANDERIJ	: Surinam	
164: BUKIT RIMPAH	: Bangka & Belitung Islands (Indonesia)	
165: CAMP AREA ASTRO	: Camp Mcmurdo Area, Antarctica	
166: G. SEGARA	: Kalimantan Is. (Indonesia)	
167: HERAT NORTH	: Afghanistan	
168: HU-TZU-SHAN	: Taiwan	
169: TANANARIVE OBSERVATORY 1925:	Madagascar	
170: YACARE	: Uruguay	
171: RT-90	: Sweden	

Loran C Chains

Chain	GRI	S1	S2	S3	S4	S5
Central Pacific	4990	11	29	--	--	--
Canadian East Coast	5930	11	25	38	--	--
Commando Lion (Korea)	5970	11	31	42	--	--
Canadian West Coast	5990	11	27	41	--	--
South Saudi Arabia	7170	11	26	39	52	--
Labrador Sea	7930	11	26	--	--	--
Eastern Russia	7950	11	30	46	61	--
Gulf of Alaska	7960	11	26	44	--	--
Norwegian Sea	7970	11	26	46	60	—
Southeast USA	7980	11	23	43	59	--
Mediterranean Sea	7990	11	29	47	--	--
Western Russia	8000	10	25	50	65	--
North Central USA	8290	11	27	42	--	--
North Saudi Arabia	8990	11	25	40	56	69
Great Lakes	8970	11	28	44	59	--
South Central USA	9610	11	25	40	52	65
West Coast USA	9940	11	27	40	--	--
Northeast USA	9960	11	25	39	54	--
Northeast Pacific (old)	9970	11	30	55	81	--
Icelandic	9980	11	30	--	--	--
North Pacific	9990	11	29	43	--	--
Suez	4991	10	24			
England, France	8940	12	30			
Northwest Pacific	8930	11	30	50	70	
Newfoundland East Coast	7270	11	25			
Lessay	6731	10	39			
BØ	7001	11	27			
Sylt	7499	11	26			
Ejde	9007	10	23	38		
Saudia Arabia North	8830	11	25	39	56	
Saudia Arabia South	7030	11	25	37	55	

Decca Chains

Chain No.	Chain	Chain code	Location
01	South Baltic	0A	Europe
02	Vestlandet	0E	"
03	Southwest British	1B	"
04	Northumbrian	2A	"
05	Holland	2E	"
06	North British	3B	"
07	Lofoten	3E	"
08		3F	"
09	North Baltic	4B	"
10	North West	4C	"
11	Trondelag	4E	"
12	English	5B	"
13	North Bothnian	5F	"
14	Southern Spanish	6A	"
15	North Scottish	6C	"
16	Gulf of Finland	6E	"
17	Danish	7B	"
18	Irish	7D	"
19	Finnmark	7E	"
20	French	8B	"
21	South Bothnian	8C	"
22	Hebridean	8E	"
23	Frisian Islands	9B	"
24	Helgeland	9E	"
25	Skagerrak	10B	"
26	North Persian Gulf	5C	Persian Gulf & India
27	South Persian Gulf	1C	"
28	Bombay	7B	"
29	Calcutta	8B	"
30	Bangladesh	6C	"
31	Saliyah	2F	"
32	Hokkaido	9C	Japan
33	Tohoku	6C	"

Chain no.	Chain	Chain code	Location
34	Kanto	8C	Japan
35	Shikoku	4C	"
36	Hokuriku	2C	"
37	Kita Kyushu	7C	"
38	Namaqualand	4A	Southern Africa
39	Cape	6A	"
40	Eastern Province	8A	"
41	South West Africa	9C	"
42	Natal	10C	"
43	Dampier	8E	Australia
44	Port Headland	4A	"
45	Anticosti	9C	Northern America
46	East Newfoundland	2C	"
47	Cabot Strait	6B	"
48	Nova Scotia	7C	"

DGPS Reference Station List

Country	Location	ID No.
Belgium	OOSTENDEPHARE	
Denmark	HAMMERODDE	0451
	SKAGEN	0452
	BLAAVANDS HUK	0453
Great Britain	ST. CATHERINE'S POINT	0020
	LIZARD	0001
	POINT LYNAS	
	RHINNS OF ISLAY	
	BUTT OF LEWIS	
	SUMBURGH HEAD	
	GIRDLE NESS	
	FLAMBOROUGH HEAD	0039
NORTH FORELAND	0054	
Finland	PORKKALA	0400
	MANTYLUOTO	0401
	OUTOKUMPU	
	PUUMALA	
France	GATTEVILLE	
	ECKMUHL	
	LES BALEINES	
	CAP FERRET	
	REVELLATA	
Germany	WUSTROW	0491
	HELGOLAND	0492
Netherlands	AMELAND	
	HOEK VAN HOLLAND	
Iceland	REYKJANES	0001
	BJARGTANGAR	0002
	SKAGATA	0003

Country	Location	ID No.
Iceland	RAUFARHOFN	0004
	DJUPIVOGUR	0005
	SKARDSFJARA	0006
Ireland	MIZEN HEAD	
	TORY ISLAND	
Latvia	VENTSPILS	
Norway	FAERDER	0101
	UTSIRA	0201
	UTVAER	0203
	SVINOEY	0204
	HALTEN	0206
	SKOMVAER	0302
	TORUNGEN	0102
	LISTA	0104
	SKLINNA	0207
	TORSVAAG	0305
	HELNES	0307
	VARDOE	0309
	BELLSUND	0401
	Russia	BALTIYSK
Spain	CABO FINISTERRE	
	CABO GATA	
	PUNTA DE CALA FIGUERA	
Sweden	BJUROKLUBB	0461
	SKAGS UDDE	0462
	OSKAR	0463
	ALMAGRUNDET	0464
	HOBURG	0465
	KULLEN	0466
	HJORTONS UDDE	0467
United States of America	WHITEFISH PH, MI	
	DULUTH, MN	

Country	Location	ID No.
United States of America	UPPER KEWEENAW, MI	
	NEEBISH IS., MI	
	SEUL CHOIX PT, MI	
	PRESQUE ILE, MI	
	SAGINAW, MI	
	MILLWAUKEE, WI	
	DETROIT, MI	
	BUFFALO, NY	
	PORTSMOUTH, NH	0003
	MONTAUK PT, NY	0002
	WILDWOOD, NJ	1008
	WILDWOOD, NJ	1007
	CAPE HENLOPEN, DE	0001
	ALEXANDRIA, VA	
	CAPE HENRY, VA	0004
	BASS HARBOR, ME	
	CHATHAM, MA	
	SANDY HOOK, NJ	0008
	FORT MACON, NC	
	CHARLESTON, SC	
	CAPE CANAVERAL, FL	
	EGMONT KEY, FL	
	MIAMI, FL	
	KEY WEST, FL	
	SANJUAN, PR	
	ENGLISH TURN, LA	
	GALVESTON, TX	
	ARKANSAS PASS, TX	
	MOBILE PT, AL	
	WHIDBEY IS, WA	0276
	ROBINSON PT, WA	0274
	C. MENDOCINO, CA	

Country	Location	ID No.
United States of America	PIGEON PT, CA	
	PT BLUNT, CA	
	PT ARGUELLO, CA	
	PT LOMA, CA	
	CAPE HINCHENBROOK, AK	
	POTATO PT, AK	
	NIKISHKA, AK	
	CAPE CHINIAC, AK	
	COLD BAY, AK	
	YAKUTAR, AK	
	HAINES, AK	
	GUSTAVUS, AK	
	BIORKA IS, AK	
	LEVEL IS, AK	
	ANNETTE IS, AK	
	BARBERS POINT	
	UPOLO PT, HI	
	KOKOLE PT, HI	
	VICKSBURG, MS	0800
	MEMPHIS, TN	
ST LOUIS, MO		
Canada	POINT PATRIE	
	PORT WELLER	
	SOMBRA	
	TROIS RIVIERES	
	LAUZON	
	ST JEAN SUR RICHELIEU	
	PARTRIDGE ISLAND	

Country	Location	ID No.
Canada	WESTERN HEAD	
	CAPE RACE	
	PORT AUX BASQUES	
	CAPE SPEAR	
	TRIPLE ISLAND, B.C.	0909
	POINT ATKINSON, B.C.	0902
	RACE ROCKS, B.C.	
Bermuda	ST. DAVID'S HEAD	
Brazil	PONTA DE SAO MARCOS	

Glossary

Almanac

Each GPS satellite broadcasts its own orbital data as well as general orbital data of all other GPS satellites. This general orbital data is called the Almanac. The GPS receiver receives the Almanac and decodes it to calculate the quantity and elevation angle of satellites in view, to know when it can receive the GPS signal. If there is no Almanac in the receiver it cannot fix its position. The receiver is shipped with no Almanac, thus when it is turned on for the first time it starts receiving the Almanac. Each time the unit is turned on the previous Almanac is erased and the latest received.

Beacon receiver

The DGPS (Differential GPS) station transmits a beacon signal which contains information about GPS error. The device which receives the beacon signal is called a beacon receiver.

Cold start

When the GPS receiver is turned on for the very first time, it starts receiving the Almanac. This condition is called cold start. In this condition it takes about two minutes to find position. Once the Almanac is stored in the GPS navigator, it takes only about 20 seconds to find position. (The normal start-up condition is called warm start.)

Destination

A destination can be either a single destination waypoint or a series of waypoints leading to the ultimate destination. When you set a destination, the GPS receiver provides range and bearing data to the destination, to help you steer to the destination along the shortest past possible.

Differential GPS (DGPS)

The differential GPS system, consisting of DGPS land stations and DGPS beacon receiver-equipped marine vessels, further refines the accuracy of the GPS measured position.

A DGPS land station knows its exact position. If there is a difference between GPS position and DGPS land station's position this is called GPS error. The DGPS station transmits GPS error data to a beacon receiver which relays the data to the GPS receiver. The GPS receiver uses this data to refine the accuracy of the GPS position (within about 10 meters under ideal conditions).

DGPS stations are strategically located throughout America (including Hawaii and Alaska), Europe, Canada, Bermuda and Brazil.

Estimated time of arrival (ETA)

The time at which you arrive at the ultimate destination.

Geodetic chart

A nautical chart is usually made by either trigonometrical survey or astronomical survey and according to the geodetic chart standards of the country where it is used. The GPS standard chart system is WGS-84.

Thus if you are using a chart different from WGS-84, there will be error between GPS position and nautical chart position. To get correct position, the GPS receiver must know what chart system you are using, to apply an offset to GPS position.

GPS measured position

GPS measured latitude and longitude position.

Intermediate waypoint

A waypoint in a route.

Magnetic bearing

Bearing relative to magnetic north, with the compass bearing corrected for deviation.

Magnetic variation offset

The location of the magnetic north pole is different from the geographical north pole. This causes a difference between the true and magnetic north direction. This difference is called magnetic variation, and varies with respect to the observation point on the earth. This variation may be entered automatically or manually.

Navigation calculation

The GPS receiver calculates the range, bearing and cross track error to next waypoint when you select a destination. The calculation of that data is called navigation calculation. The calculation itself is done using one of two methods (selectable): Great circle (straight line between two points) or Rhumb line (straight line between two points on nautical chart).

NMEA 0183

The National Marine Electronics Association's signal format which enables connection of electronic equipment of different marine electronics manufacturers.

Plotting interval

The plotting interval determines both how the track will be reconstructed on the display and track storage time. The shorter the interval the more accurate the reconstruction of track line, however total storage time is reduced. The plotting interval can be selected to time or distance. Plotting by distance offers the advantage that the track is not stored when the vessel is anchored.

Route

A series of waypoints leading to the ultimate destination.

Route navigation

Following a stored route.

S/A

GPS was developed by the US Department of Defense mainly for use by its marine vessels and aircraft. For civil users the accuracy of the system is purposely downgraded for national security reasons. This intentional accuracy reduction is called S/A. Because GPS position error may be greater than 100 meters any GPS position should be double checked against other sources to confirm position.

Skip

This means to bypass a waypoint in a route.

Storage capacity

Storage capacity defines how many points of track and marks a memory can hold. The GP-80's storage capacity is 2,000 points.

Time-to-go (TTG)

The amount of time necessary to get to a destination, maintaining current speed and course.

Time differences

Time differences (or TDs) are the position information generated by the Loran C and Decca position-fixing systems. TDs are the time in microseconds between the transmission of pulsed signals in the Loran C and Decca systems.

Total distance

Total distance is the number of miles from starting point to end point in a route.

Trip distance

The distance run from starting position.

Trip elapsed time

The amount of time passed since departing a starting point.

True bearing

Bearing relative to North; compass bearing corrected for magnetic deviation. The GPS receiver can display true or magnetic bearing.

Velocity to destination

The amount of speed in the direction (course) of the desired destination.

Waypoint

A waypoint is a particular location on a voyage whether it be a starting, intermediate or destination waypoint.

INDEX

A

Anchor watch alarm 7-2
Apportioning the Memory 2-5
Arrival Alarm 7-1
Automatic testing 9-6

B

brilliance 1-3

C

Cancelling Destination 5-5
Centering Cursor Position 2-2
Clearing the Memory 9-1
Cross Track Error Alarm 7-2
contrast 1-3
Course-up 2-1
Connecting Marks 3-2
Course bar tone 8-4
Cursor size 8-5
[CURSOR ON/OFF] 2-1

D

Data display 1-6, 6-1
DATA 1 out setting 8-6
DATA 2 output setting 8-7
DATA 3 output setting 8-7
Deleting Waypoints 4-5
Deleting Route Waypoints 4-6
Deleting Routes 4-7
Decca LOPs 6-2
Demo Display 6-4
Depth Alarm 7-4display mode 1-3
DGPS Settings 8-10
DGPS error 9-2
Display Orientation 2-1
Displaying LOPs 6-2
Disable satellite 8-1
Display test 9-6

E

Editing Waypoints 4-4
Entering marks 3-1
entry of comment 4-2
Entering position 8-3
Enlarging characters 8-5
Erasing Track 2-3
Erasing marks 3-1
Erasing Route Waypoints 5-6
Error Messages 9-2
Event Marks 3-3
Event Mark Shape 3-3
external DGPS receiver 8-11

F

Fix mode 8-1

G

Geodetic datum 8-1
GPS Menu 8-1
GPS smoothing 8-1
GPS Monitor Displays 8-12
GPS error 9-2
Grid tone 8-4
Great Circle 5-7

H

Highway display 1-4
Hold icon 2-3

K

Keyboard test 9-5

L

Loading lighthouse data 8-8
Loran LOPs 6-2

N

Navigation display 1-5
North-up 2-1

M

Magnetic variation 2-6
Mark Shape 3-2
mark connection line 3-2
Memory and I/O circuits test 9-5
MOB Mark 3-4

P

Plotter 1 display 1-4
Plotter 2 display 1-4
[PLOT ON/OFF]key 2-2
Position offset 8-1
Position-fixing Accuracy 1-2
[POWER]key 1-2

R

receiver indication 1-2
Registering Waypoints 4-1
Registering Routes 4-5
Replacing Route Waypoints 4-7
Rhumb Line 5-7

S

Selecting the Display Mode 1-3
Selecting DGPS station 8-10
Self Tests 9-5
Shifting the Display 2-2
Setting Destination 5-1
Setting DATA to NMEA 8-7
Ship's Speed Alarm 7-3
Skipping route waypoint 5-5
Speed average 8-1
Stopping Plotting 2-2
Starting Plotting 2-2

T

Track Plotting Interval 2-4
True bearing 2-6
Trip Alarm 7-3
Turning on the power 1-2
Turning the power off 1-3
Time difference 8-1
Time mark tone 8-4

U

User-defined display 6-1
Unit distance 8-3
Unit of depth 8-3
Unit of water temperature 8-4
Unit of altitude 8-4

W

Water Temperature Alarm 7-4
Waypoint mark size 8-5

X

XTE alarm 7-2

Z

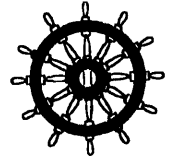
[ZOOM IN]key 2-1
[ZOOM OUT]key 2-1

FURUNO**FURUNO ELECTRIC CO., LTD.**

9-52 Ashihara-Cho, Nishinomiya City, 662-8580, Hyogo, Japan

Tel: +81 798-65-2111 Fax: +81 798-65-4200

Pub NO. DOC-228

Declaration of conformity to typeWe **FURUNO ELECTRIC CO., LTD.**-----
(Manufacturer)

9-52 Ashihara-Cho, Nishinomiya City, 662-8580, Hyogo, Japan

(Address)

hereby declare under our sole responsibility that the product

Marine GPS navigator model GP-80 consisting of Display unit GPR-20, Antenna unit GPA-016 and DGPS Beacon receiver board GR-800

(Model names, type numbers)

to which this declaration relates conforms to the following standard(s) or normative document(s)

EN 61108-1: June 1996 (IEC 61108-1: 1996-06)

EN 61162-1: November 1995 (IEC 61162-1: 1995-11)

EN 60945: January 1997 (IEC 60945 Third edition: 1996-11)

(title and/or number and date of issue of the standard(s) or other normative document(s))

For assessment, see EC type-examination certificate N° KCS/99212016/AA/00 of 3 June 1999 issued by KCS Certification, The Netherlands

This declaration is issued according to the provisions of European Council Directive 96/98/EC on marine equipment modified by Commission Directive 98/85/EC.

On behalf of Furuno Electric Co., Ltd.

Hiroaki Komatsu
Manager,
International Rules and RegulationsNishinomiya City, Japan
June 16, 1999-----
(Place and date of issue)-----
(name and signature or equivalent marking of authorized person)